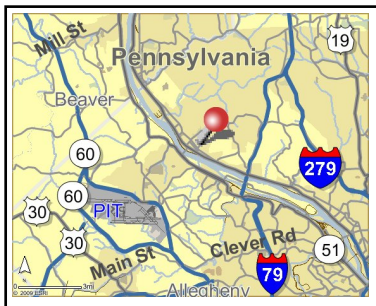
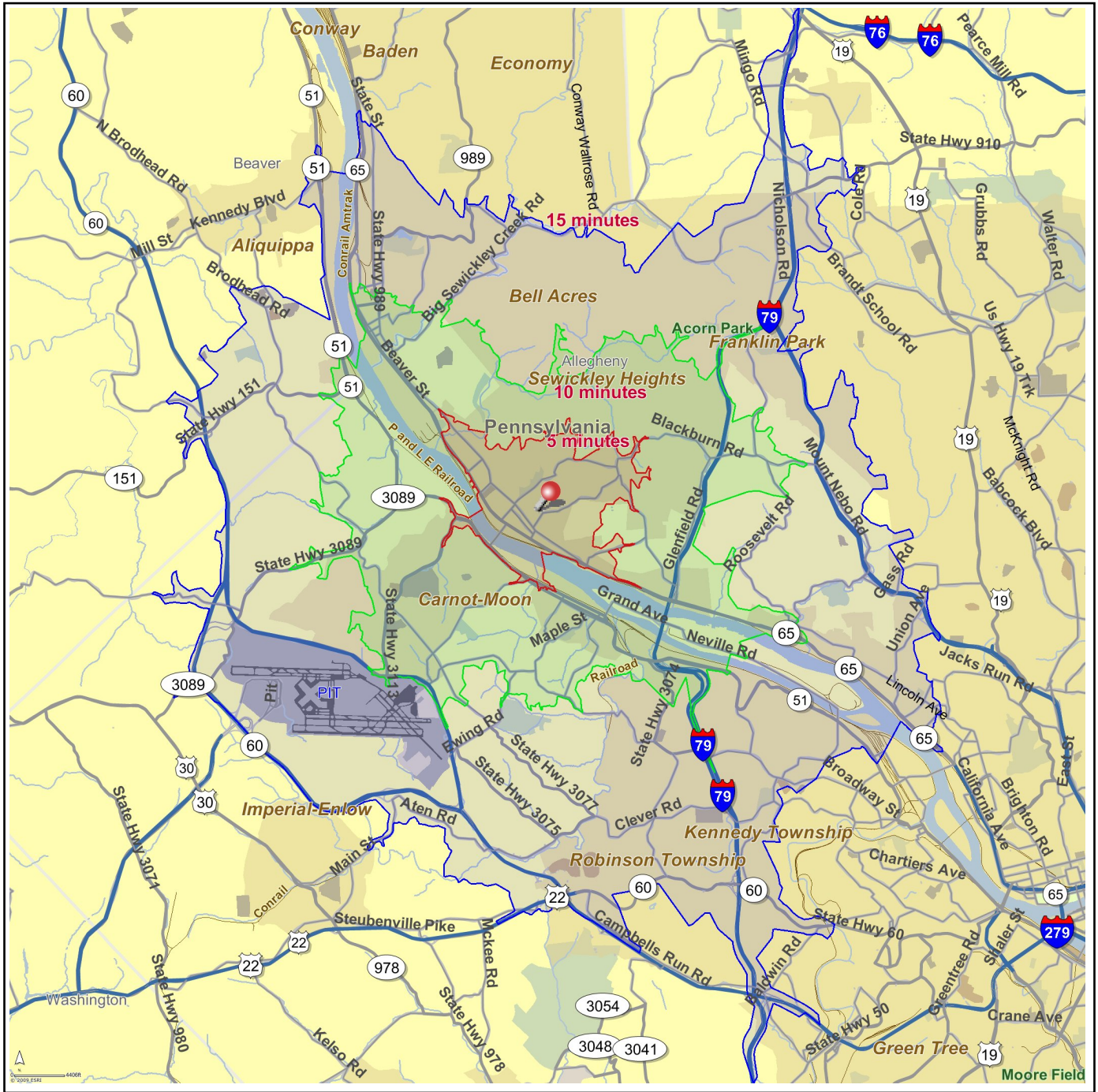


Site Map

Sewickley
Pennsylvania, United States

Prepared By: STDBOnline.com
April 7, 2009

Latitude 40.5403
Longitude -80.1748





Site Type: Drive Time	Sewickley Pennsylvania, United States Drive Time: 5 minutes	Sewickley Pennsylvania, United States Drive Time: 10 minutes	Sewickley Pennsylvania, United States Drive Time: 15 minutes
------------------------------	--	---	---

2008 Population

Total Population	6,113	41,913	107,210
Male Population	45.1%	47.5%	47.7%
Female Population	54.9%	52.5%	52.3%
Median Age	46.0	42.8	43.0

2008 Income

Median HH Income	\$62,997	\$57,666	\$57,988
Per Capita Income	\$50,407	\$35,410	\$33,414
Average HH Income	\$112,215	\$80,688	\$77,814

2008 Households

Total Households	2,745	18,070	45,559
Average Household Size	2.21	2.23	2.28
1990-2000 Annual Rate	-0.17%	0.13%	0.41%

2008 Housing

Owner Occupied Housing Units	61.1%	60.0%	63.9%
Renter Occupied Housing Units	29.6%	30.0%	27.2%
Vacant Housing Units	9.3%	10.1%	8.9%

Population

1990 Population	6,776	43,950	106,272
2000 Population	6,524	43,006	107,668
2008 Population	6,113	41,913	107,210
2013 Population	5,923	40,933	105,264
1990-2000 Annual Rate	-0.38%	-0.22%	0.13%
2000-2008 Annual Rate	-0.79%	-0.31%	-0.05%
2008-2013 Annual Rate	-0.63%	-0.47%	-0.37%

In the identified market area, the current year population is 107,210. In 2000, the Census count in the market area was 107,668. The rate of change since 2000 was -0.05 percent annually. The five-year projection for the population in the market area is 105,264, representing a change of -0.37 percent annually from 2008 to 2013. Currently, the population is 47.7 percent male and 52.3 percent female.

Households

1990 Households	2,925	17,986	43,248
2000 Households	2,877	18,213	45,039
2008 Households	2,745	18,070	45,559
2013 Households	2,675	17,756	44,993
1990-2000 Annual Rate	-0.17%	0.13%	0.41%
2000-2008 Annual Rate	-0.57%	-0.1%	0.14%
2008-2013 Annual Rate	-0.52%	-0.35%	-0.25%

The household count in this market area has changed from 45,039 in 2000 to 45,559 in the current year, a change of 0.14 percent annually. The five-year projection of households is 44,993, a change of -0.25 percent annually from the current year total. Average household size is currently 2.28, compared to 2.32 in the year 2000. The number of families in the current year is 28,318 in the market area.

Housing

Currently, 63.9 percent of the 49,997 housing units in the market area are owner occupied; 27.2 percent, renter occupied; and 8.9 percent are vacant. In 2000, there were 48,342 housing units— 65.4 percent owner occupied, 27.8 percent renter occupied and 6.9 percent vacant. The rate of change in housing units since 2000 is 0.41 percent. Median home value in the market area is \$153,563, compared to a median home value of \$192,285 for the U.S. In five years, median home value is projected to change by 1.41 percent annually to \$164,660. From 2000 to the current year, median home value changed by 5.52 percent annually.

Source: U.S. Bureau of the Census, 2000 Census of Population and Housing. ESRI forecasts for 2008 and 2013. ESRI converted 1990 Census data into 2000 geography.



Site Type: Drive Time	Sewickley Pennsylvania, United States Drive Time: 5 minutes	Sewickley Pennsylvania, United States Drive Time: 10 minutes	Sewickley Pennsylvania, United States Drive Time: 15 minutes
Median Household Income			
1990 Median HH Income	\$37,972	\$30,322	\$30,434
2000 Median HH Income	\$49,242	\$42,623	\$43,061
2008 Median HH Income	\$62,997	\$57,666	\$57,988
2013 Median HH Income	\$70,947	\$67,777	\$67,729
1990-2000 Annual Rate	2.63%	3.46%	3.53%
2000-2008 Annual Rate	3.03%	3.73%	3.67%
2008-2013 Annual Rate	2.41%	3.28%	3.15%
Per Capita Income			
1990 Per Capita Income	\$28,248	\$18,120	\$16,828
2000 Per Capita Income	\$43,221	\$27,154	\$25,269
2008 Per Capita Income	\$50,407	\$35,410	\$33,414
2013 Per Capita Income	\$56,075	\$41,559	\$39,630
1990-2000 Annual Rate	4.34%	4.13%	4.15%
2000-2008 Annual Rate	1.88%	3.27%	3.44%
2008-2013 Annual Rate	2.15%	3.25%	3.47%
Average Household Income			
1990 Average Household Income	\$65,585	\$44,004	\$41,244
2000 Average Household Income	\$96,378	\$63,151	\$59,527
2008 Average HH Income	\$112,215	\$80,688	\$77,814
2013 Average HH Income	\$124,031	\$94,113	\$91,823
1990-2000 Annual Rate	3.92%	3.68%	3.74%
2000-2008 Annual Rate	1.86%	3.01%	3.3%
2008-2013 Annual Rate	2.02%	3.13%	3.37%

Households by Income

Current median household income is \$57,988 in the market area, compared to \$53,154 for all U.S. households. Median household income is projected to be \$67,729 in five years. In 2000, median household income was \$43,061, compared to \$30,434 in 1990.

Current average household income is \$77,814 in this market area, compared to \$73,126 for all U.S. households. Average household income is projected to be \$91,823 in five years. In 2000, average household income was \$59,527, compared to \$41,244 in 1990.

Current per capita income is \$33,414 in the market area, compared to the U.S. per capita income of \$27,916. The per capita income is projected to be \$39,630 in five years. In 2000, the per capita income was \$25,269, compared to \$16,828 in 1990.

Population by Employment

Total Businesses	573	2,769	6,208
Total Employees	3,568	22,488	63,926

Currently, 94.6 percent of the civilian labor force in the identified market area is employed and 5.4 percent are unemployed. In comparison, 93.4 percent of the U.S. civilian labor force is employed, and 6.6 percent are unemployed. In five years the rate of employment in the market area will be 94.9 percent of the civilian labor force, and unemployment will be 5.1 percent. The percentage of the U.S. civilian labor force that will be employed in five years is 93.9 percent, and 6.1 percent will be unemployed. In 2000, 63.3 percent of the population aged 16 years or older in the market area participated in the labor force, and 0.1 percent were in the Armed Forces.

In the current year, the occupational distribution of the employed population is:

- 66.9 percent in white collar jobs (compared to 60.2 percent of U.S. employment)
- 16.2 percent in service jobs (compared to 16.5 percent of U.S. employment)
- 16.9 percent in blue collar jobs (compared to 23.3 percent of U.S. employment)

In 2000, 80.6 percent of the market area population drove alone to work, and 2.6 percent worked at home. The average travel time to work in 2000 was 23.0 minutes in the market area, compared to the U.S. average of 25.5 minutes.

Population by Education

In 2008, the educational attainment of the population aged 25 years or older in the market area was distributed as follows:

- 9.4 percent had not earned a high school diploma (16.4 percent in the U.S.)
- 32.6 percent were high school graduates only (29.6 percent in the U.S.)
- 8.6 percent had completed an Associate degree (7.2 percent in the U.S.)
- 21.4 percent had a Bachelor's degree (17.0 percent in the U.S.)
- 11.4 percent had earned a Master's/Professional/Doctorate Degree (9.7 percent in the U.S.)



Demographic and Income Profile - Appraisal Version

Prepared By: STDBOnline.com

Sewickley Latitude **40.5403**
Pennsylvania, United States Longitude **-80.1748**
Site Type: Drive Time Drive Time: **5 minutes**

Summary	2000	2008	2013
Population	6,524	6,113	5,923
Households	2,877	2,745	2,675
Families	1,762	1,623	1,546
Average Household Size	2.25	2.21	2.19
Owner Occupied HUs	1,973	1,848	1,774
Renter Occupied HUs	904	897	901
Median Age	42.9	46.0	47.9

Trends: 2008-2013 Annual Rate	Area	State	National
Population	-0.63%	0.32%	1.23%
Households	-0.52%	0.42%	1.26%
Families	-0.97%	0.09%	1.05%
Owner HHs	-0.81%	0.24%	1.07%
Median Household Income	2.41%	3.45%	3.19%

Households by Income	2000		2008		2013	
	Number	Percent	Number	Percent	Number	Percent
< \$15,000	320	11.0%	217	7.9%	176	6.6%
\$15,000 - \$24,999	376	13.0%	264	9.6%	184	6.9%
\$25,000 - \$34,999	346	11.9%	248	9.0%	202	7.5%
\$35,000 - \$49,999	422	14.6%	360	13.1%	318	11.9%
\$50,000 - \$74,999	490	16.9%	468	17.0%	542	20.3%
\$75,000 - \$99,999	242	8.3%	450	16.4%	439	16.4%
\$100,000 - \$149,999	269	9.3%	227	8.3%	289	10.8%
\$150,000 - \$199,000	121	4.2%	129	4.7%	120	4.5%
\$200,000+	313	10.8%	382	13.9%	406	15.2%
Median Household Income	\$49,242		\$62,997		\$70,947	
Average Household Income	\$96,378		\$112,215		\$124,031	
Per Capita Income	\$43,221		\$50,407		\$56,075	

Population by Age	2000		2008		2013	
	Number	Percent	Number	Percent	Number	Percent
0 - 4	357	5.5%	305	5.0%	298	5.0%
5 - 9	433	6.6%	340	5.6%	292	4.9%
10 - 14	452	6.9%	403	6.6%	344	5.8%
15 - 19	367	5.6%	389	6.4%	360	6.1%
20 - 24	211	3.2%	301	4.9%	304	5.1%
25 - 34	665	10.2%	484	7.9%	535	9.0%
35 - 44	996	15.3%	742	12.1%	564	9.5%
45 - 54	1,058	16.2%	956	15.6%	940	15.9%
55 - 64	659	10.1%	897	14.7%	942	15.9%
65 - 74	634	9.7%	521	8.5%	606	10.2%
75 - 84	525	8.0%	518	8.5%	434	7.3%
85+	166	2.5%	257	4.2%	303	5.1%

Data Note: Income is expressed in current dollars.

Source: U.S. Bureau of the Census, 2000 Census of Population and Housing. ESRI forecasts for 2008 and 2013.



Demographic and Income Profile - Appraisal Version

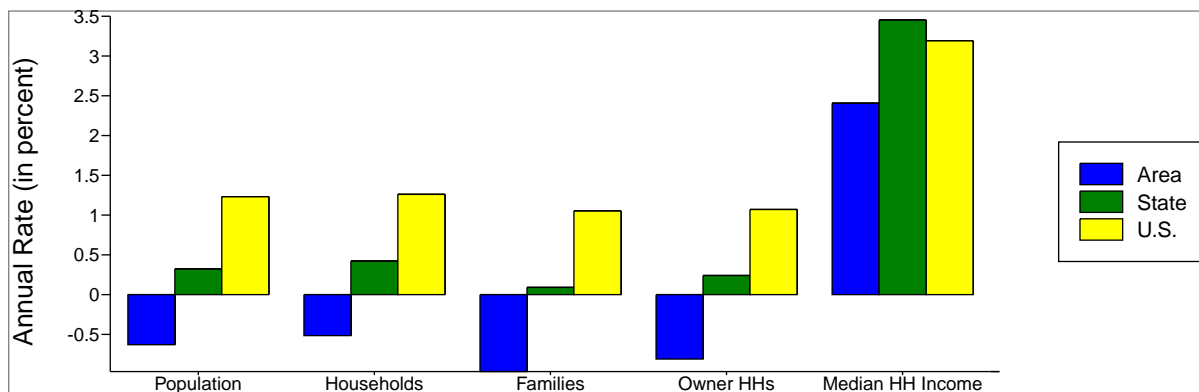
Prepared By: STDBOnline.com

Sewickley
 Pennsylvania, United States

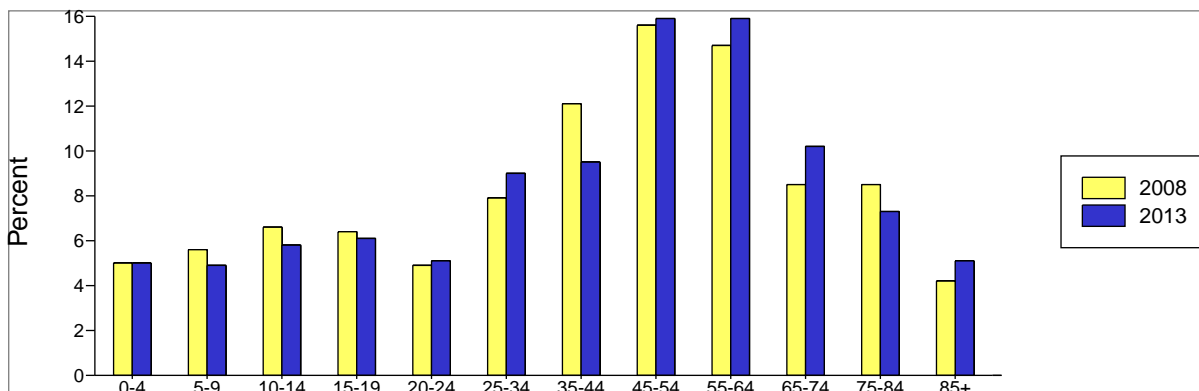
Site Type: Drive Time

Latitude 40.5403
 Longitude -80.1748
 Drive Time: 5 minutes

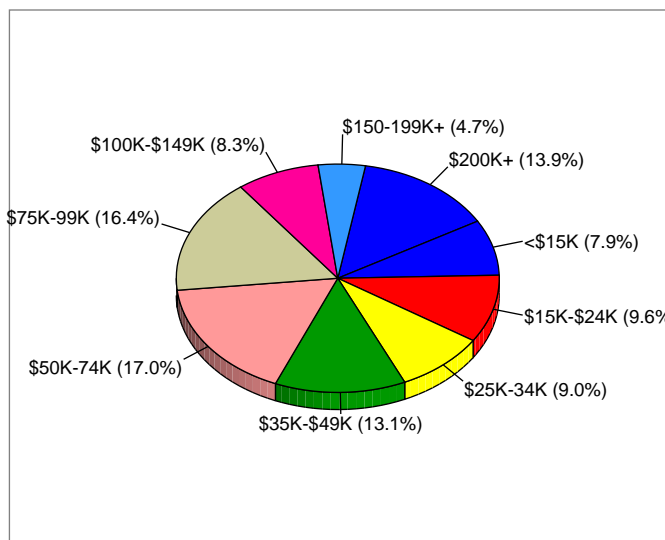
Trends 2008-2013



Population by Age



2008 Household Income



Source: ESRI forecasts for 2008 and 2013.



Demographic and Income Profile - Appraisal Version

Prepared By: STDBOnline.com

Sewickley Latitude **40.5403**
Pennsylvania, United States Longitude **-80.1748**
Site Type: Drive Time Drive Time: **10 minutes**

Summary	2000	2008	2013
Population	43,006	41,913	40,933
Households	18,213	18,070	17,756
Families	11,306	10,838	10,411
Average Household Size	2.28	2.23	2.22
Owner Occupied HUs	12,242	12,049	11,623
Renter Occupied HUs	5,971	6,021	6,132
Median Age	40.0	42.8	44.5

Trends: 2008-2013 Annual Rate	Area	State	National
Population	-0.47%	0.32%	1.23%
Households	-0.35%	0.42%	1.26%
Families	-0.8%	0.09%	1.05%
Owner HHs	-0.72%	0.24%	1.07%
Median Household Income	3.28%	3.45%	3.19%

Households by Income	2000		2008		2013	
	Number	Percent	Number	Percent	Number	Percent
< \$15,000	2,806	15.4%	1,884	10.4%	1,532	8.6%
\$15,000 - \$24,999	2,354	12.9%	1,735	9.6%	1,326	7.5%
\$25,000 - \$34,999	2,315	12.7%	1,690	9.4%	1,283	7.2%
\$35,000 - \$49,999	2,973	16.3%	2,488	13.8%	2,143	12.1%
\$50,000 - \$74,999	3,515	19.3%	3,582	19.8%	3,666	20.7%
\$75,000 - \$99,999	1,690	9.3%	3,186	17.6%	3,101	17.5%
\$100,000 - \$149,999	1,406	7.7%	1,794	9.9%	2,531	14.3%
\$150,000 - \$199,000	428	2.4%	653	3.6%	787	4.4%
\$200,000+	724	4.0%	1,058	5.9%	1,384	7.8%
Median Household Income	\$42,623		\$57,666		\$67,777	
Average Household Income	\$63,151		\$80,688		\$94,113	
Per Capita Income	\$27,154		\$35,410		\$41,559	

Population by Age	2000		2008		2013	
	Number	Percent	Number	Percent	Number	Percent
0 - 4	2,333	5.4%	2,180	5.2%	2,120	5.2%
5 - 9	2,675	6.2%	2,250	5.4%	2,056	5.0%
10 - 14	2,757	6.4%	2,516	6.0%	2,282	5.6%
15 - 19	2,802	6.5%	2,940	7.0%	2,763	6.7%
20 - 24	2,326	5.4%	2,596	6.2%	2,684	6.6%
25 - 34	5,223	12.1%	4,140	9.9%	4,134	10.1%
35 - 44	6,870	16.0%	5,697	13.6%	4,686	11.4%
45 - 54	6,331	14.7%	6,733	16.1%	6,569	16.0%
55 - 64	4,142	9.6%	5,408	12.9%	6,056	14.8%
65 - 74	3,876	9.0%	3,355	8.0%	3,632	8.9%
75 - 84	2,884	6.7%	2,898	6.9%	2,541	6.2%
85+	786	1.8%	1,198	2.9%	1,412	3.4%

Data Note: Income is expressed in current dollars.

Source: U.S. Bureau of the Census, 2000 Census of Population and Housing. ESRI forecasts for 2008 and 2013.



Demographic and Income Profile - Appraisal Version

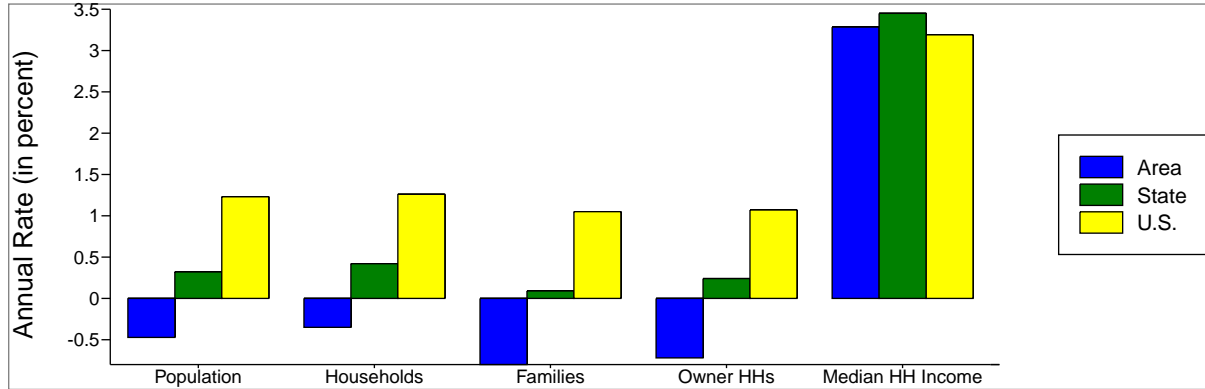
Prepared By: STDBOnline.com

Sewickley
Pennsylvania, United States

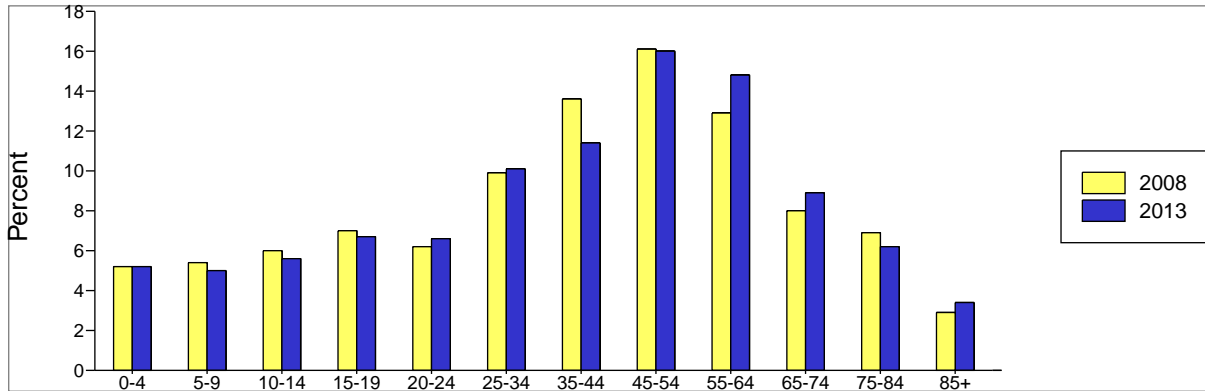
Site Type: Drive Time

Latitude 40.5403
Longitude -80.1748
Drive Time: 10 minutes

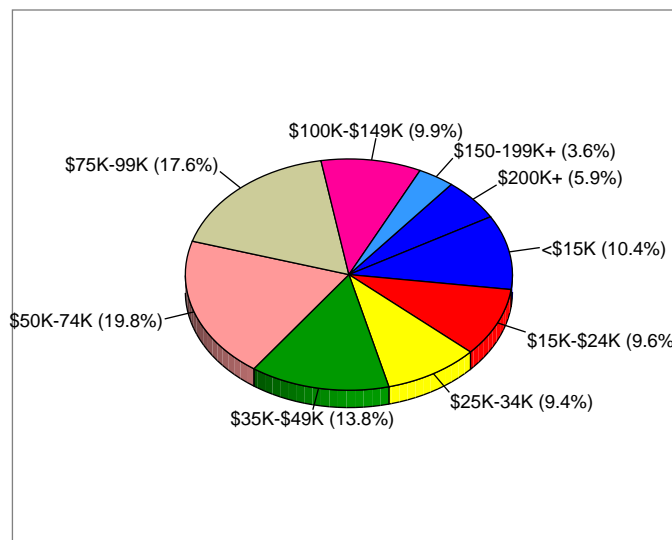
Trends 2008-2013



Population by Age



2008 Household Income



Source: ESRI forecasts for 2008 and 2013.



Demographic and Income Profile - Appraisal Version

Prepared By: STDBOnline.com

Sewickley
Pennsylvania, United States

Site Type: Drive Time

Latitude 40.5403
Longitude -80.1748
Drive Time: 15 minutes

Summary	2000	2008	2013
Population	107,668	107,210	105,264
Households	45,039	45,559	44,993
Families	28,745	28,318	27,435
Average Household Size	2.32	2.28	2.27
Owner Occupied HUs	31,616	31,937	31,155
Renter Occupied HUs	13,423	13,622	13,838
Median Age	40.3	43.0	44.5

Trends: 2008-2013 Annual Rate	Area	State	National
Population	-0.37%	0.32%	1.23%
Households	-0.25%	0.42%	1.26%
Families	-0.63%	0.09%	1.05%
Owner HHs	-0.49%	0.24%	1.07%
Median Household Income	3.15%	3.45%	3.19%

Households by Income	2000		2008		2013	
	Number	Percent	Number	Percent	Number	Percent
< \$15,000	6,480	14.4%	4,462	9.8%	3,620	8.0%
\$15,000 - \$24,999	6,043	13.4%	4,345	9.5%	3,203	7.1%
\$25,000 - \$34,999	5,733	12.7%	4,469	9.8%	3,400	7.6%
\$35,000 - \$49,999	7,364	16.3%	6,214	13.6%	5,547	12.3%
\$50,000 - \$74,999	8,958	19.9%	9,328	20.5%	9,563	21.3%
\$75,000 - \$99,999	4,547	10.1%	8,100	17.8%	7,846	17.4%
\$100,000 - \$149,999	3,603	8.0%	4,627	10.2%	6,573	14.6%
\$150,000 - \$199,000	986	2.2%	1,740	3.8%	2,028	4.5%
\$200,000+	1,382	3.1%	2,273	5.0%	3,213	7.1%
Median Household Income	\$43,061		\$57,988		\$67,729	
Average Household Income	\$59,527		\$77,814		\$91,823	
Per Capita Income	\$25,269		\$33,414		\$39,630	

Population by Age	2000		2008		2013	
	Number	Percent	Number	Percent	Number	Percent
0 - 4	5,885	5.5%	5,645	5.3%	5,467	5.2%
5 - 9	6,713	6.2%	5,825	5.4%	5,407	5.1%
10 - 14	7,013	6.5%	6,386	6.0%	5,925	5.6%
15 - 19	6,515	6.1%	6,981	6.5%	6,563	6.2%
20 - 24	5,200	4.8%	6,125	5.7%	6,246	5.9%
25 - 34	13,263	12.3%	11,119	10.4%	11,266	10.7%
35 - 44	18,041	16.8%	14,758	13.8%	12,421	11.8%
45 - 54	15,934	14.8%	17,827	16.6%	17,243	16.4%
55 - 64	10,220	9.5%	13,673	12.8%	15,622	14.8%
65 - 74	9,559	8.9%	8,405	7.8%	9,029	8.6%
75 - 84	7,223	6.7%	7,346	6.9%	6,485	6.2%
85+	2,104	2.0%	3,118	2.9%	3,589	3.4%

Data Note: Income is expressed in current dollars.

Source: U.S. Bureau of the Census, 2000 Census of Population and Housing. ESRI forecasts for 2008 and 2013.



Demographic and Income Profile - Appraisal Version

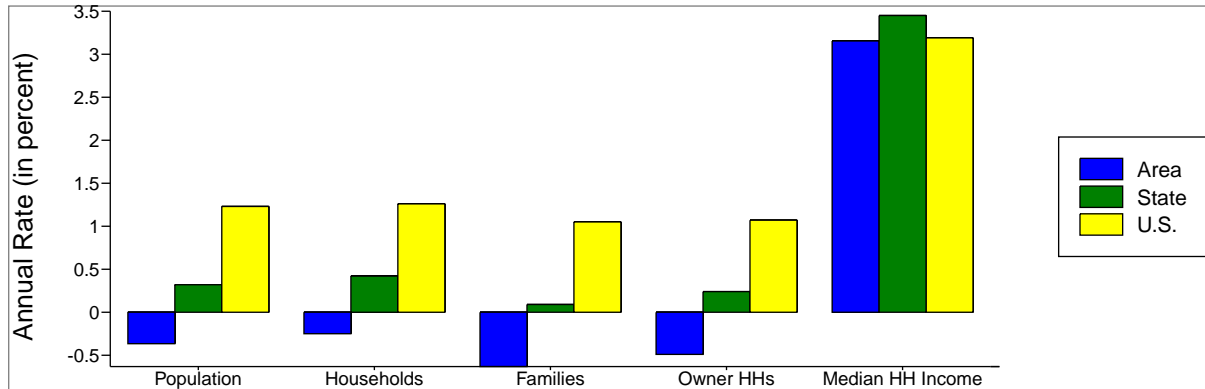
Prepared By: STDBOnline.com

Sewickley
Pennsylvania, United States

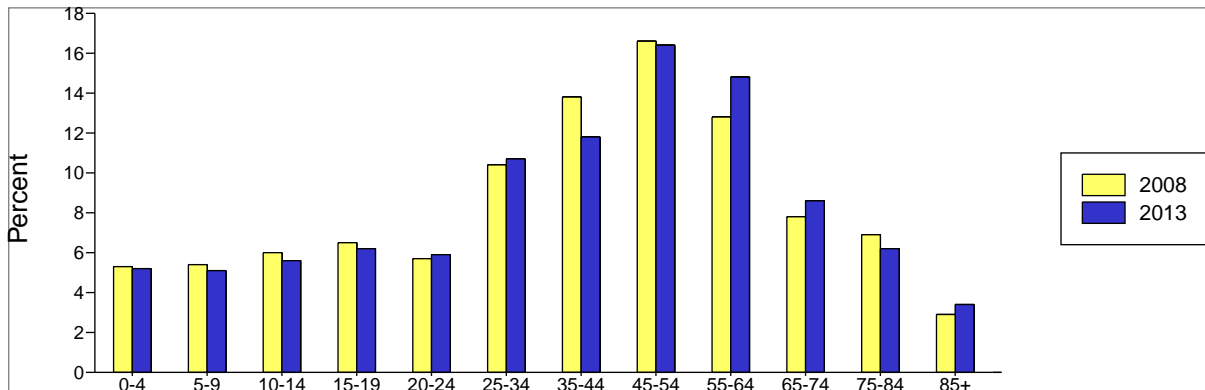
Site Type: Drive Time

Latitude 40.5403
Longitude -80.1748
Drive Time: 15 minutes

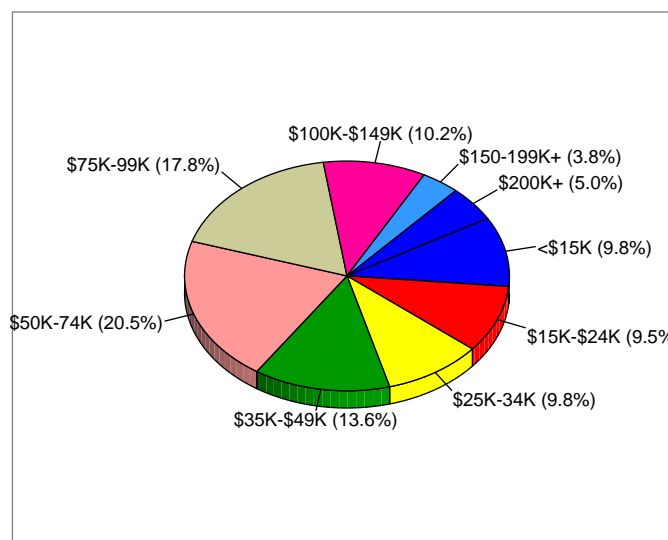
Trends 2008-2013



Population by Age



2008 Household Income



Source: ESRI forecasts for 2008 and 2013.



Latitude **40.5403**
Longitude **-80.1748**

Sewickley	Sewickley	Sewickley
Pennsylvania, United S	Pennsylvania, United S	Pennsylvania, United S
Drive Time: 5 minutes	Drive Time: 10 minutes	Drive Time: 15 minutes



1990 Total Population	6,776	43,950	106,272
2000 Total Population	6,524	43,006	107,668
2000 Group Quarters	60	1,532	3,164
2000 Population Density	1,239.0	1,214.6	1,061.3
2008 Total Population	6,113	41,913	107,210
2008 Population Density	1,161.0	1,183.7	1,056.8
2013 Total Population	5,923	40,933	105,264
2008 - 2013 Annual Rate	-0.63%	-0.47%	-0.37%



1990 Households	2,925	17,986	43,248
2000 Households	2,877	18,213	45,039
2000 Average Household Size	2.25	2.28	2.32
2008 Households	2,745	18,070	45,559
2008 Average Household Size	2.21	2.23	2.28
2013 Households	2,675	17,756	44,993
2013 Average Household Size	2.19	2.22	2.27
2008 - 2013 Annual Rate	-0.52%	-0.35%	-0.25%
2000 Families	1,762	11,306	28,745
2000 Average Family Size	2.94	2.93	2.95
2008 Families	1,623	10,838	28,318
2008 Average Family Size	2.92	2.91	2.93
2013 Families	1,546	10,411	27,435
2013 Average Family Size	2.93	2.91	2.93
2008 - 2013 Annual Rate	-0.97%	-0.8%	-0.63%



2000 Housing Units	3,062	19,732	48,342
Owner Occupied Housing Units	64.4%	62.0%	65.4%
Renter Occupied Housing Units	29.5%	30.2%	27.8%
Vacant Housing Units	6.1%	7.7%	6.9%
2008 Housing Units	3,027	20,094	49,997
Owner Occupied Housing Units	61.1%	60.0%	63.9%
Renter Occupied Housing Units	29.6%	30.0%	27.2%
Vacant Housing Units	9.3%	10.1%	8.9%
2013 Housing Units	3,024	20,283	50,536
Owner Occupied Housing Units	58.7%	57.3%	61.6%
Renter Occupied Housing Units	29.8%	30.2%	27.4%
Vacant Housing Units	11.5%	12.5%	11.0%

Median Household Income

1990	\$37,972	\$30,322	\$30,434
2000	\$49,242	\$42,623	\$43,061
2008	\$62,997	\$57,666	\$57,988
2013	\$70,947	\$67,777	\$67,729

Median Home Value

1990	\$100,943	\$64,574	\$64,414
2000	\$170,000	\$97,648	\$98,581
2008	\$268,036	\$148,985	\$153,563
2013	\$294,549	\$159,729	\$164,660

Per Capita Income

1990	\$28,248	\$18,120	\$16,828
2000	\$43,221	\$27,154	\$25,269
2008	\$50,407	\$35,410	\$33,414
2013	\$56,075	\$41,559	\$39,630

Median Age

1990	40.8	37.4	37.3
2000	42.9	40.0	40.3
2008	46.0	42.8	43.0
2013	47.9	44.5	44.5

Data Note: Household population includes persons not residing in group quarters. Average Household Size is the household population divided by total households. Persons in families include the householder and persons related to the householder by birth, marriage, or adoption. Per Capita Income represents the income received by all persons aged 15 years and over divided by total population. Detail may not sum to totals due to rounding.

Source: U.S. Bureau of the Census, 2000 Census of Population and Housing. ESRI forecasts for 2008 and 2013. ESRI converted 1990 Census data into 2000 geography.



Latitude 40.5403
Longitude -80.1748

Sewickley
Pennsylvania, United S
Drive Time: 5 minutes

Sewickley
Pennsylvania, United S
Drive Time: 10 minutes

Sewickley
Pennsylvania, United S
Drive Time: 15 minutes



2000 Households by Income

Household Income Base	Sewickley	Sewickley	Sewickley
< \$15,000	2,899	18,211	45,096
\$15,000 - \$24,999	11.0%	15.4%	14.4%
\$25,000 - \$34,999	13.0%	12.9%	13.4%
\$35,000 - \$49,999	11.9%	12.7%	12.7%
\$50,000 - \$74,999	14.6%	16.3%	16.3%
\$75,000 - \$99,999	16.9%	19.3%	19.9%
\$100,000 - \$149,999	8.3%	9.3%	10.1%
\$150,000 - \$199,999	9.3%	7.7%	8.0%
\$200,000+	4.2%	2.4%	2.2%
Average Household Income	10.8%	4.0%	3.1%
	\$96,378	\$63,151	\$59,527

2008 Households by Income

Household Income Base	Sewickley	Sewickley	Sewickley
< \$15,000	2,745	18,070	45,558
\$15,000 - \$24,999	7.9%	10.4%	9.8%
\$25,000 - \$34,999	9.6%	9.6%	9.5%
\$35,000 - \$49,999	9.0%	9.4%	9.8%
\$50,000 - \$74,999	13.1%	13.8%	13.6%
\$75,000 - \$99,999	17.0%	19.8%	20.5%
\$100,000 - \$149,999	16.4%	17.6%	17.8%
\$150,000 - \$199,999	8.3%	9.9%	10.2%
\$200,000+	4.7%	3.6%	3.8%
Average Household Income	13.9%	5.9%	5.0%
	\$112,215	\$80,688	\$77,814

2013 Households by Income

Household Income Base	Sewickley	Sewickley	Sewickley
< \$15,000	2,676	17,753	44,993
\$15,000 - \$24,999	6.6%	8.6%	8.0%
\$25,000 - \$34,999	6.9%	7.5%	7.1%
\$35,000 - \$49,999	7.5%	7.2%	7.6%
\$50,000 - \$74,999	11.9%	12.1%	12.3%
\$75,000 - \$99,999	20.3%	20.7%	21.3%
\$100,000 - \$149,999	16.4%	17.5%	17.4%
\$150,000 - \$199,999	10.8%	14.3%	14.6%
\$200,000+	4.5%	4.4%	4.5%
Average Household Income	15.2%	7.8%	7.1%
	\$124,031	\$94,113	\$91,823

2000 Owner Occupied HUs by Value

Total	Sewickley	Sewickley	Sewickley
<\$50,000	1,978	12,231	31,598
\$50,000 - 99,999	5.0%	14.7%	12.0%
\$100,000 - 149,999	23.2%	36.8%	39.1%
\$150,000 - 199,999	16.4%	22.4%	24.6%
\$200,000 - \$299,999	11.2%	11.1%	11.2%
\$300,000 - 499,999	16.1%	6.4%	7.4%
\$500,000 - 999,999	13.2%	4.5%	3.6%
\$1,000,000+	12.0%	3.1%	1.6%
Average Home Value	2.8%	1.0%	0.4%
	\$271,214	\$147,188	\$131,995

2000 Specified Renter Occupied HUs by Contract Rent

Total	Sewickley	Sewickley	Sewickley
With Cash Rent	893	5,922	13,336
No Cash Rent	93.2%	94.1%	95.0%
Median Rent	6.8%	5.9%	5.0%
Average Rent	\$495	\$414	\$432
	\$545	\$442	\$455

Data Note: Income represents the preceding year, expressed in current dollars. Household income includes wage and salary earnings, interest, dividends, net rents, pensions, SSI and welfare payments, child support and alimony. Specified Renter Occupied HUs exclude houses on 10+ acres. Average Rent excludes units paying no cash rent.

Source: U.S. Bureau of the Census, 2000 Census of Population and Housing. ESRI forecasts for 2008 and 2013.



Latitude 40.5403
 Longitude -80.1748

Sewickley
 Pennsylvania, United S
 Drive Time: 5 minutes

Sewickley
 Pennsylvania, United S
 Drive Time: 10 minutes

Sewickley
 Pennsylvania, United S
 Drive Time: 15 minutes



2000 Population by Age

	Sewickley	Sewickley	Sewickley
	Pennsylvania, United S	Pennsylvania, United S	Pennsylvania, United S
	Drive Time: 5 minutes	Drive Time: 10 minutes	Drive Time: 15 minutes
Total	6,523	43,005	107,670
0 - 4	5.5%	5.4%	5.5%
5 - 9	6.6%	6.2%	6.2%
10 - 14	6.9%	6.4%	6.5%
15 - 19	5.6%	6.5%	6.1%
20 - 24	3.2%	5.4%	4.8%
25 - 34	10.2%	12.1%	12.3%
35 - 44	15.3%	16.0%	16.8%
45 - 54	16.2%	14.7%	14.8%
55 - 64	10.1%	9.6%	9.5%
65 - 74	9.7%	9.0%	8.9%
75 - 84	8.0%	6.7%	6.7%
85+	2.5%	1.8%	2.0%
18+	76.8%	78.3%	78.1%

2008 Population by Age

Total	6,113	41,911	107,208
0 - 4	5.0%	5.2%	5.3%
5 - 9	5.6%	5.4%	5.4%
10 - 14	6.6%	6.0%	6.0%
15 - 19	6.4%	7.0%	6.5%
20 - 24	4.9%	6.2%	5.7%
25 - 34	7.9%	9.9%	10.4%
35 - 44	12.1%	13.6%	13.8%
45 - 54	15.6%	16.1%	16.6%
55 - 64	14.7%	12.9%	12.8%
65 - 74	8.5%	8.0%	7.8%
75 - 84	8.5%	6.9%	6.9%
85+	4.2%	2.9%	2.9%
18+	78.7%	79.5%	79.4%

2013 Population by Age

Total	5,922	40,935	105,263
0 - 4	5.0%	5.2%	5.2%
5 - 9	4.9%	5.0%	5.1%
10 - 14	5.8%	5.6%	5.6%
15 - 19	6.1%	6.7%	6.2%
20 - 24	5.1%	6.6%	5.9%
25 - 34	9.0%	10.1%	10.7%
35 - 44	9.5%	11.4%	11.8%
45 - 54	15.9%	16.0%	16.4%
55 - 64	15.9%	14.8%	14.8%
65 - 74	10.2%	8.9%	8.6%
75 - 84	7.3%	6.2%	6.2%
85+	5.1%	3.4%	3.4%
18+	80.2%	80.5%	80.2%

2000 Population by Sex

Males	45.3%	47.7%	47.7%
Females	54.7%	52.3%	52.3%

2008 Population by Sex

Males	45.1%	47.5%	47.7%
Females	54.9%	52.5%	52.3%

2013 Population by Sex

Males	44.9%	47.4%	47.8%
Females	55.1%	52.6%	52.2%

Source: U.S. Bureau of the Census, 2000 Census of Population and Housing. ESRI forecasts for 2008 and 2013.



Latitude 40.5403
Longitude -80.1748

Sewickley
Pennsylvania, United S
Drive Time: 5 minutes

Sewickley
Pennsylvania, United S
Drive Time: 10 minutes

Sewickley
Pennsylvania, United S
Drive Time: 15 minutes



2008 Population 15+ by Marital Status

	Sewickley	Sewickley	Sewickley
	Pennsylvania, United S	Pennsylvania, United S	Pennsylvania, United S
Total	5,066	34,967	89,352
Never Married	23.5%	27.6%	26.7%
Married	56.8%	54.8%	56.2%
Widowed	9.1%	7.8%	7.9%
Divorced	10.6%	9.7%	9.2%



2000 Population 16+ by Employment Status

	Sewickley	Sewickley	Sewickley
	Pennsylvania, United S	Pennsylvania, United S	Pennsylvania, United S
Total	5,194	34,674	86,837
In Labor Force	59.2%	63.2%	63.3%
Civilian Employed	57.0%	59.8%	60.2%
Civilian Unemployed	2.1%	3.3%	3.0%
In Armed Forces	0.1%	0.1%	0.1%
Not in Labor Force	40.8%	36.8%	36.7%

2008 Civilian Population 16+ in Labor Force

	Sewickley	Sewickley	Sewickley
	Pennsylvania, United S	Pennsylvania, United S	Pennsylvania, United S
Civilian Employed	95.3%	94.8%	94.6%
Civilian Unemployed	4.7%	5.2%	5.4%

2013 Civilian Population 16+ in Labor Force

	Sewickley	Sewickley	Sewickley
	Pennsylvania, United S	Pennsylvania, United S	Pennsylvania, United S
Civilian Employed	95.5%	95.0%	94.9%
Civilian Unemployed	4.5%	5.0%	5.1%

2000 Females 16+ by Employment Status and Age of Children

	Sewickley	Sewickley	Sewickley
	Pennsylvania, United S	Pennsylvania, United S	Pennsylvania, United S
Total	2,875	18,315	46,092
Own Children < 6 Only	4.4%	6.0%	5.9%
Employed/in Armed Forces	2.7%	3.5%	3.6%
Unemployed	0.0%	0.1%	0.2%
Not in Labor Force	1.7%	2.4%	2.1%
Own Children < 6 and 6-17 Only	5.1%	5.3%	5.2%
Employed/in Armed Forces	2.8%	2.9%	3.1%
Unemployed	0.0%	0.2%	0.1%
Not in Labor Force	2.4%	2.2%	2.0%
Own Children 6-17 Only	17.8%	15.3%	15.3%
Employed/in Armed Forces	11.9%	11.4%	11.5%
Unemployed	0.2%	0.3%	0.3%
Not in Labor Force	5.7%	3.6%	3.5%
No Own Children < 18	72.7%	73.5%	73.5%
Employed/in Armed Forces	32.4%	35.3%	35.4%
Unemployed	1.9%	2.1%	1.8%
Not in Labor Force	38.3%	36.0%	36.3%

Source: U.S. Bureau of the Census, 2000 Census of Population and Housing. ESRI forecasts for 2008 and 2013.



Latitude 40.5403
Longitude -80.1748

Sewickley
Pennsylvania, United S
Drive Time: 5 minutes

Sewickley
Pennsylvania, United S
Drive Time: 10 minutes

Sewickley
Pennsylvania, United S
Drive Time: 15 minutes



2008 Employed Population 16+ by Industry

	Sewickley	Sewickley	Sewickley
	Pennsylvania, United S	Pennsylvania, United S	Pennsylvania, United S
Total	2,930	21,478	54,988
Agriculture/Mining	0.1%	0.1%	0.2%
Construction	2.8%	4.2%	5.5%
Manufacturing	5.0%	7.2%	7.5%
Wholesale Trade	2.0%	2.9%	3.3%
Retail Trade	11.6%	10.3%	10.7%
Transportation/Utilities	7.4%	12.3%	10.8%
Information	3.5%	1.9%	2.1%
Finance/Insurance/Real Estate	8.2%	7.6%	8.5%
Services	56.7%	49.9%	48.2%
Public Administration	2.6%	3.5%	3.3%

2008 Employed Population 16+ by Occupation

	Sewickley	Sewickley	Sewickley
	Pennsylvania, United S	Pennsylvania, United S	Pennsylvania, United S
Total	2,931	21,478	54,989
White Collar	78.4%	67.3%	66.9%
Management/Business/Financial	20.2%	16.3%	16.0%
Professional	35.3%	23.5%	23.1%
Sales	12.4%	11.3%	11.6%
Administrative Support	10.5%	16.1%	16.2%
Services	12.2%	16.9%	16.2%
Blue Collar	9.3%	15.9%	16.9%
Farming/Forestry/Fishing	0.2%	0.1%	0.1%
Construction/Extraction	1.4%	3.5%	4.1%
Installation/Maintenance/Repair	2.5%	3.6%	3.7%
Production	1.6%	2.9%	3.3%
Transportation/Material Moving	3.7%	5.7%	5.8%



2000 Workers 16+ by Means of Transportation to Work

	Sewickley	Sewickley	Sewickley
	Pennsylvania, United S	Pennsylvania, United S	Pennsylvania, United S
Total	2,933	20,450	51,530
Drove Alone - Car, Truck, or Van	76.6%	79.7%	80.6%
Carpooled - Car, Truck, or Van	7.0%	7.9%	8.3%
Public Transportation	3.5%	4.2%	4.8%
Walked	5.4%	3.6%	2.9%
Other Means	1.0%	1.2%	0.8%
Worked at Home	6.6%	3.4%	2.6%

2000 Workers 16+ by Travel Time to Work

	Sewickley	Sewickley	Sewickley
	Pennsylvania, United S	Pennsylvania, United S	Pennsylvania, United S
Total	2,934	20,451	51,530
Did Not Work at Home	93.4%	96.6%	97.4%
Less than 5 minutes	2.7%	3.6%	2.8%
5 to 9 minutes	16.9%	12.0%	10.8%
10 to 19 minutes	22.6%	33.3%	32.1%
20 to 24 minutes	13.4%	12.9%	15.5%
25 to 34 minutes	22.7%	18.2%	20.5%
35 to 44 minutes	6.9%	6.5%	6.0%
45 to 59 minutes	6.0%	5.9%	5.8%
60 to 89 minutes	0.9%	2.5%	2.5%
90 or more minutes	1.4%	1.7%	1.5%
Worked at Home	6.6%	3.4%	2.6%
Average Travel Time to Work (in min)	22.6	22.8	23.0

2000 Households by Vehicles Available

	Sewickley	Sewickley	Sewickley
	Pennsylvania, United S	Pennsylvania, United S	Pennsylvania, United S
Total	2,880	18,205	45,008
None	9.0%	10.7%	10.0%
1	44.8%	39.3%	38.2%
2	34.1%	37.9%	39.0%
3	8.7%	9.3%	9.9%
4	2.5%	2.0%	2.1%
5+	0.8%	0.8%	0.8%
Average Number of Vehicles Available	1.5	1.6	1.6

Source: U.S. Bureau of the Census, 2000 Census of Population and Housing. ESRI forecasts for 2008.



Latitude 40.5403
Longitude -80.1748

Sewickley
Pennsylvania, United S
Drive Time: 5 minutes

Sewickley
Pennsylvania, United S
Drive Time: 10 minutes

Sewickley
Pennsylvania, United S
Drive Time: 15 minutes



2000 Households by Type

	Sewickley	Sewickley	Sewickley
	Pennsylvania, United S	Pennsylvania, United S	Pennsylvania, United S
	Drive Time: 5 minutes	Drive Time: 10 minutes	Drive Time: 15 minutes
Total	2,878	18,214	45,040
Family Households	61.3%	62.1%	63.8%
Married-couple Family	49.4%	48.8%	51.1%
With Related Children	21.1%	20.4%	21.8%
Other Family (No Spouse)	11.9%	13.3%	12.7%
With Related Children	6.6%	7.4%	6.7%
Nonfamily Households	38.7%	37.9%	36.2%
Householder Living Alone	35.6%	33.3%	31.8%
Householder Not Living Alone	3.2%	4.6%	4.4%
Households with Related Children	27.7%	27.8%	28.5%
Households with Persons 65+	33.4%	29.7%	29.2%

2000 Households by Size

	Sewickley	Sewickley	Sewickley
	Pennsylvania, United S	Pennsylvania, United S	Pennsylvania, United S
	Drive Time: 5 minutes	Drive Time: 10 minutes	Drive Time: 15 minutes
Total	2,877	18,213	45,039
1 Person Household	35.6%	33.3%	31.8%
2 Person Household	33.4%	33.5%	33.6%
3 Person Household	13.1%	14.9%	15.0%
4 Person Household	10.6%	11.9%	12.8%
5 Person Household	5.2%	4.5%	4.9%
6 Person Household	1.4%	1.4%	1.4%
7+ Person Household	0.7%	0.5%	0.5%

2000 Households by Year Householder Moved In

	Sewickley	Sewickley	Sewickley
	Pennsylvania, United S	Pennsylvania, United S	Pennsylvania, United S
	Drive Time: 5 minutes	Drive Time: 10 minutes	Drive Time: 15 minutes
Total	2,880	18,205	45,005
Moved in 1999 to March 2000	15.8%	15.6%	15.3%
Moved in 1995 to 1998	26.6%	23.1%	23.1%
Moved in 1990 to 1994	14.9%	15.4%	15.1%
Moved in 1980 to 1989	18.4%	16.9%	16.6%
Moved in 1970 to 1979	9.4%	11.1%	11.2%
Moved in 1969 or Earlier	14.8%	18.0%	18.8%
Median Year Householder Moved In	1992	1991	1991



2000 Housing Units by Units in Structure

	Sewickley	Sewickley	Sewickley
	Pennsylvania, United S	Pennsylvania, United S	Pennsylvania, United S
	Drive Time: 5 minutes	Drive Time: 10 minutes	Drive Time: 15 minutes
Total	3,071	19,734	48,355
1, Detached	63.9%	63.1%	65.0%
1, Attached	4.0%	6.6%	6.3%
2	6.3%	5.0%	5.5%
3 or 4	6.6%	7.2%	6.1%
5 to 9	7.8%	5.8%	4.7%
10 to 19	6.9%	5.3%	4.5%
20+	4.4%	6.5%	7.2%
Mobile Home	0.0%	0.4%	0.7%
Other	0.0%	0.0%	0.0%

2000 Housing Units by Year Structure Built

	Sewickley	Sewickley	Sewickley
	Pennsylvania, United S	Pennsylvania, United S	Pennsylvania, United S
	Drive Time: 5 minutes	Drive Time: 10 minutes	Drive Time: 15 minutes
Total	3,068	19,726	48,335
1999 to March 2000	0.2%	0.6%	1.6%
1995 to 1998	0.7%	1.8%	2.8%
1990 to 1994	1.1%	4.1%	4.4%
1980 to 1989	4.1%	6.0%	8.0%
1970 to 1979	5.7%	14.2%	13.2%
1969 or Earlier	88.2%	73.3%	70.2%
Median Year Structure Built	1936	1952	1956

Source: U.S. Bureau of the Census, 2000 Census of Population and Housing.



Latitude 40.5403
 Longitude -80.1748

Sewickley
 Pennsylvania, United S
 Drive Time: 5 minutes

Sewickley
 Pennsylvania, United S
 Drive Time: 10 minutes

Sewickley
 Pennsylvania, United S
 Drive Time: 15 minutes



2000 Population 3+ by School Enrollment

	Sewickley	Sewickley	Sewickley
Total	6,349	41,705	104,309
Enrolled in Nursery/Preschool	3.3%	2.1%	1.9%
Enrolled in Kindergarten	1.0%	1.1%	1.2%
Enrolled in Grade 1-8	11.0%	10.6%	10.7%
Enrolled in Grade 9-12	6.6%	5.2%	5.3%
Enrolled in College	1.9%	5.4%	4.3%
Enrolled in Grad/Prof School	1.5%	1.1%	1.2%
Not Enrolled in School	74.7%	74.5%	75.4%

2008 Population 25+ by Educational Attainment

	Sewickley	Sewickley	Sewickley
Total	4,375	29,430	76,248
Less than 9th Grade	2.0%	2.8%	2.9%
9th - 12th Grade, No Diploma	3.9%	6.6%	6.5%
High School Graduate	19.4%	30.2%	32.6%
Some College, No Degree	12.0%	16.6%	16.6%
Associate Degree	7.7%	8.8%	8.6%
Bachelor's Degree	30.5%	22.3%	21.4%
Graduate/Professional Degree	24.5%	12.7%	11.4%

Source: U.S. Bureau of the Census, 2000 Census of Population and Housing. ESRI forecasts for 2008.



Latitude 40.5403
Longitude -80.1748


Sewickley
Pennsylvania, United S
Drive Time: 5 minutes

Sewickley
Pennsylvania, United S
Drive Time: 10 minutes

Sewickley
Pennsylvania, United S
Drive Time: 15 minutes

Top 3 Tapestry Segments

1.	Retirement Communities	Simple Living	Cozy and Comfortable
2.	Connoisseurs	Prosperous Empty Nests	Rustbelt Retirees
3.	Midlife Junction	Cozy and Comfortable	Simple Living

 **2008 Consumer Spending** shows the amount spent on a variety of goods and services by households that reside in the market area. Expenditures are shown by broad budget categories that are not mutually exclusive. Consumer spending does not equal business revenue.

Apparel & Services: Total \$	\$9,258,321	\$44,628,155	\$108,818,308
Average Spent	\$3,372.79	\$2,469.74	\$2,388.51
Spending Potential Index	126	92	89
Computers & Accessories: Total \$	\$984,819	\$4,719,220	\$11,458,295
Average Spent	\$358.77	\$261.16	\$251.50
Spending Potential Index	150	109	105
Education: Total \$	\$6,068,716	\$29,156,709	\$70,957,371
Average Spent	\$2,210.83	\$1,613.54	\$1,557.48
Spending Potential Index	161	117	113
Entertainment/Recreation: Total \$	\$15,431,661	\$73,506,030	\$178,520,786
Average Spent	\$5,621.73	\$4,067.85	\$3,918.45
Spending Potential Index	151	109	105
Food at Home: Total \$	\$20,220,576	\$97,696,933	\$236,127,496
Average Spent	\$7,366.33	\$5,406.58	\$5,182.89
Spending Potential Index	151	111	106
Food Away from Home: Total \$	\$14,110,112	\$68,317,680	\$166,178,993
Average Spent	\$5,140.30	\$3,780.72	\$3,647.56
Spending Potential Index	150	110	106
Health Care: Total \$	\$18,271,038	\$85,771,773	\$205,100,620
Average Spent	\$6,656.12	\$4,746.64	\$4,501.87
Spending Potential Index	163	116	110
HH Furnishings & Equipment: Total \$	\$9,135,504	\$42,645,128	\$104,181,595
Average Spent	\$3,328.05	\$2,360.00	\$2,286.74
Spending Potential Index	145	103	99
Investments: Total \$	\$5,195,475	\$22,381,076	\$54,490,761
Average Spent	\$1,892.70	\$1,238.58	\$1,196.05
Spending Potential Index	187	122	118
Retail Goods: Total \$	\$109,294,744	\$520,563,580	\$1,262,890,998
Average Spent	\$39,815.94	\$28,808.17	\$27,719.90
Spending Potential Index	147	106	102
Shelter: Total \$	\$66,900,942	\$309,393,865	\$753,322,803
Average Spent	\$24,371.93	\$17,121.96	\$16,535.10
Spending Potential Index	157	110	106
TV/Video/Sound Equipment: Total \$	\$5,954,849	\$28,785,423	\$69,678,807
Average Spent	\$2,169.34	\$1,593.00	\$1,529.42
Spending Potential Index	151	111	106
Travel: Total \$	\$8,411,710	\$38,278,401	\$92,854,015
Average Spent	\$3,064.38	\$2,118.34	\$2,038.10
Spending Potential Index	163	112	108
Vehicle Maintenance & Repairs: Total \$	\$4,100,716	\$19,464,822	\$47,137,420
Average Spent	\$1,493.89	\$1,077.19	\$1,034.65
Spending Potential Index	151	109	104

Data Note: The Spending Potential Index represents the amount spent in the area relative to a national average of 100.

Source: Consumer Spending data are derived from the 2004 and 2005 Consumer Expenditure Surveys, Bureau of Labor Statistics.