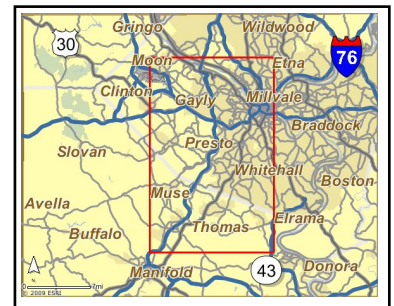
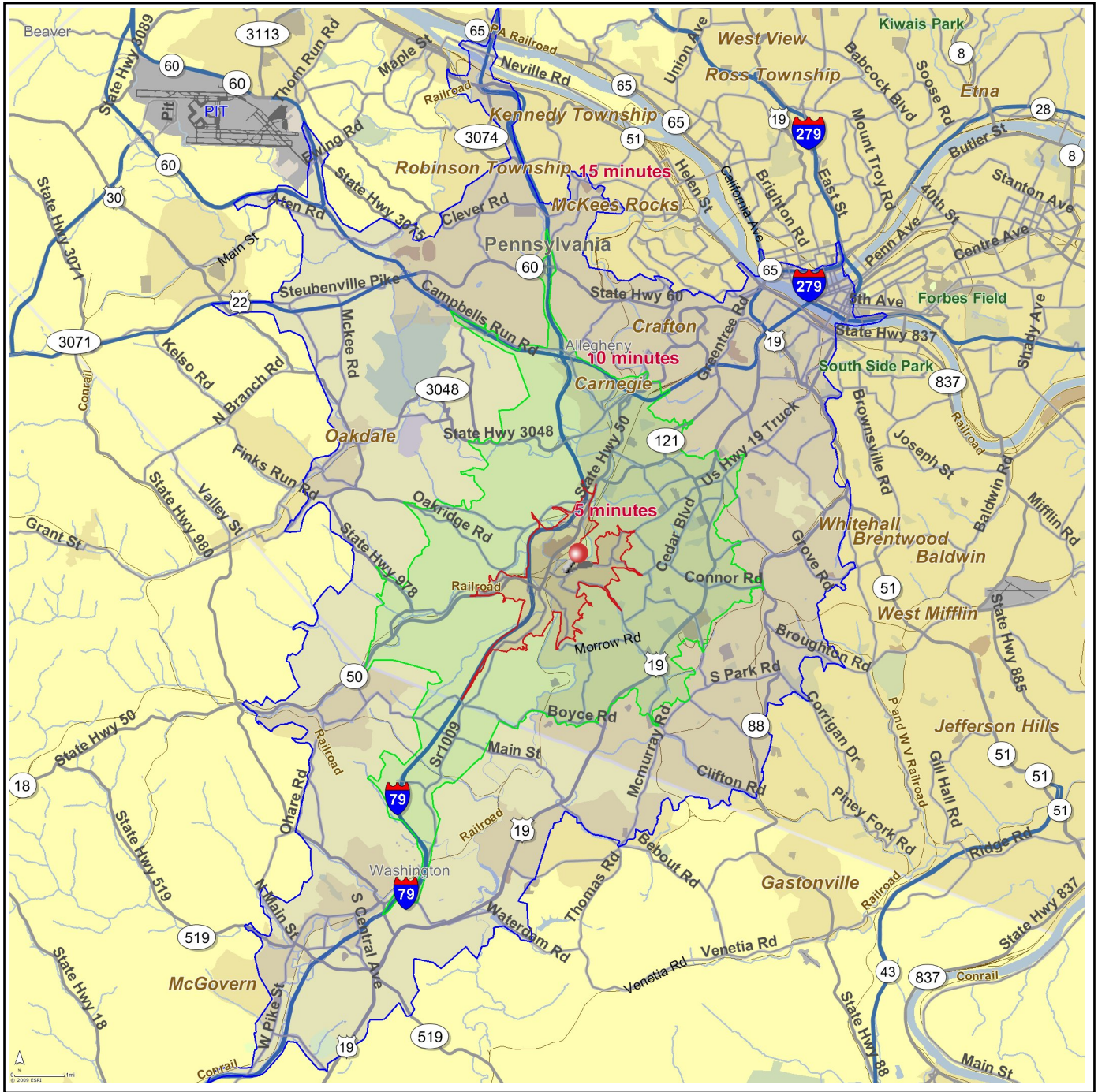


Site Map

Bridgeville (Allegheny County)
Pennsylvania, United States

Prepared By: STDBOnline.com
April 7, 2009

Latitude 40.3604
Longitude -80.105





Bridgeville (Allegheny County)
Pennsylvania, United States
Drive Time: 5 minutes

Bridgeville (Allegheny County)
Pennsylvania, United States
Drive Time: 10 minutes

Bridgeville (Allegheny County)
Pennsylvania, United States
Drive Time: 15 minutes

Site Type: Drive Time

2008 Population

Total Population	8,486	86,721	279,850
Male Population	47.1%	47.0%	47.8%
Female Population	52.9%	53.0%	52.2%
Median Age	45.5	45.0	43.1

2008 Income

Median HH Income	\$55,680	\$65,022	\$61,430
Per Capita Income	\$30,872	\$39,578	\$34,474
Average HH Income	\$67,722	\$91,453	\$80,390

2008 Households

Total Households	3,921	37,167	118,552
Average Household Size	2.10	2.26	2.29
1990-2000 Annual Rate	1.17%	0.48%	0.45%

2008 Housing

Owner Occupied Housing Units	67.5%	67.9%	66.9%
Renter Occupied Housing Units	26.5%	25.7%	25.9%
Vacant Housing Units	6.0%	6.4%	7.3%

Population

1990 Population	8,295	86,760	282,455
2000 Population	8,760	87,579	283,945
2008 Population	8,486	86,721	279,850
2013 Population	8,314	85,024	275,156
1990-2000 Annual Rate	0.55%	0.09%	0.05%
2000-2008 Annual Rate	-0.38%	-0.12%	-0.18%
2008-2013 Annual Rate	-0.41%	-0.39%	-0.34%

In the identified market area, the current year population is 279,850. In 2000, the Census count in the market area was 283,945. The rate of change since 2000 was -0.18 percent annually. The five-year projection for the population in the market area is 275,156, representing a change of -0.34 percent annually from 2008 to 2013. Currently, the population is 47.8 percent male and 52.2 percent female.

Households

1990 Households	3,512	35,120	112,726
2000 Households	3,947	36,856	117,940
2008 Households	3,921	37,167	118,552
2013 Households	3,875	36,669	117,348
1990-2000 Annual Rate	1.17%	0.48%	0.45%
2000-2008 Annual Rate	-0.08%	0.1%	0.06%
2008-2013 Annual Rate	-0.24%	-0.27%	-0.2%

The household count in this market area has changed from 117,940 in 2000 to 118,552 in the current year, a change of 0.06 percent annually. The five-year projection of households is 117,348, a change of -0.2 percent annually from the current year total. Average household size is currently 2.29, compared to 2.33 in the year 2000. The number of families in the current year is 73,573 in the market area.

Housing

Currently, 66.9 percent of the 127,821 housing units in the market area are owner occupied; 25.9 percent, renter occupied; and 7.3 percent are vacant. In 2000, there were 124,361 housing units— 68.9 percent owner occupied, 25.9 percent renter occupied and 5.2 percent vacant. The rate of change in housing units since 2000 is 0.33 percent. Median home value in the market area is \$152,059, compared to a median home value of \$192,285 for the U.S. In five years, median home value is projected to change by 1.43 percent annually to \$163,246. From 2000 to the current year, median home value changed by 5.47 percent annually.

Source: U.S. Bureau of the Census, 2000 Census of Population and Housing. ESRI forecasts for 2008 and 2013. ESRI converted 1990 Census data into 2000 geography.



Bridgeville (Allegheny County)
 Pennsylvania, United States
 Drive Time: 5 minutes

Bridgeville (Allegheny County)
 Pennsylvania, United States
 Drive Time: 10 minutes

Bridgeville (Allegheny County)
 Pennsylvania, United States
 Drive Time: 15 minutes

Site Type: Drive Time

Median Household Income

	Bridgeville (Allegheny County)	Bridgeville (Allegheny County)	Bridgeville (Allegheny County)
1990 Median HH Income	\$30,350	\$36,825	\$33,755
2000 Median HH Income	\$40,485	\$50,014	\$45,998
2008 Median HH Income	\$55,680	\$65,022	\$61,430
2013 Median HH Income	\$67,124	\$75,327	\$71,775
1990-2000 Annual Rate	2.92%	3.11%	3.14%
2000-2008 Annual Rate	3.94%	3.23%	3.57%
2008-2013 Annual Rate	3.81%	2.99%	3.16%

Per Capita Income

	Bridgeville (Allegheny County)	Bridgeville (Allegheny County)	Bridgeville (Allegheny County)
1990 Per Capita Income	\$14,866	\$20,900	\$17,635
2000 Per Capita Income	\$22,777	\$29,717	\$25,860
2008 Per Capita Income	\$30,872	\$39,578	\$34,474
2013 Per Capita Income	\$36,441	\$47,418	\$41,213
1990-2000 Annual Rate	4.36%	3.58%	3.9%
2000-2008 Annual Rate	3.75%	3.53%	3.55%
2008-2013 Annual Rate	3.37%	3.68%	3.64%

Average Household Income

	Bridgeville (Allegheny County)	Bridgeville (Allegheny County)	Bridgeville (Allegheny County)
1990 Average Household Income	\$34,612	\$51,057	\$43,633
2000 Average Household Income	\$51,255	\$69,172	\$61,080
2008 Average HH Income	\$67,722	\$91,453	\$80,390
2013 Average HH Income	\$79,372	\$108,761	\$95,507
1990-2000 Annual Rate	4%	3.08%	3.42%
2000-2008 Annual Rate	3.43%	3.44%	3.39%
2008-2013 Annual Rate	3.23%	3.53%	3.51%

Households by Income

Current median household income is \$61,430 in the market area, compared to \$53,154 for all U.S. households. Median household income is projected to be \$71,775 in five years. In 2000, median household income was \$45,998, compared to \$33,755 in 1990.

Current average household income is \$80,390 in this market area, compared to \$73,126 for all U.S. households. Average household income is projected to be \$95,507 in five years. In 2000, average household income was \$61,080, compared to \$43,633 in 1990.

Current per capita income is \$34,474 in the market area, compared to the U.S. per capita income of \$27,916. The per capita income is projected to be \$41,213 in five years. In 2000, the per capita income was \$25,860, compared to \$17,635 in 1990.

Population by Employment

	Bridgeville (Allegheny County)	Bridgeville (Allegheny County)	Bridgeville (Allegheny County)
Total Businesses	789	5,081	20,467
Total Employees	11,342	50,780	252,241

Currently, 95.0 percent of the civilian labor force in the identified market area is employed and 5.0 percent are unemployed. In comparison, 93.4 percent of the U.S. civilian labor force is employed, and 6.6 percent are unemployed. In five years the rate of employment in the market area will be 95.3 percent of the civilian labor force, and unemployment will be 4.7 percent. The percentage of the U.S. civilian labor force that will be employed in five years is 93.9 percent, and 6.1 percent will be unemployed. In 2000, 62.2 percent of the population aged 16 years or older in the market area participated in the labor force, and 0.1 percent were in the Armed Forces.

In the current year, the occupational distribution of the employed population is:

- 71.4 percent in white collar jobs (compared to 60.2 percent of U.S. employment)
- 14.2 percent in service jobs (compared to 16.5 percent of U.S. employment)
- 14.4 percent in blue collar jobs (compared to 23.3 percent of U.S. employment)

In 2000, 75.8 percent of the market area population drove alone to work, and 2.9 percent worked at home. The average travel time to work in 2000 was 25.2 minutes in the market area, compared to the U.S. average of 25.5 minutes.

Population by Education

In 2008, the educational attainment of the population aged 25 years or older in the market area was distributed as follows:

- 8.7 percent had not earned a high school diploma (16.4 percent in the U.S.)
- 31.0 percent were high school graduates only (29.6 percent in the U.S.)
- 7.8 percent had completed an Associate degree (7.2 percent in the U.S.)
- 24.0 percent had a Bachelor's degree (17.0 percent in the U.S.)
- 12.9 percent had earned a Master's/Professional/Doctorate Degree (9.7 percent in the U.S.)



Source: U.S. Bureau of the Census, 2000 Census of Population and Housing. ESRI forecasts for 2008 and 2013. ESRI converted 1990 Census data into 2000 geography.



Demographic and Income Profile - Appraisal Version

Prepared By: STDBOnline.com

Bridgeville (Allegheny County)
Pennsylvania, United States

Latitude 40.3604
Longitude -80.105
Drive Time: 5 minutes

Site Type: Drive Time

Summary	2000	2008	2013
Population	8,760	8,486	8,314
Households	3,947	3,921	3,875
Families	2,422	2,317	2,237
Average Household Size	2.15	2.10	2.08
Owner Occupied HUs	2,858	2,817	2,760
Renter Occupied HUs	1,089	1,104	1,115
Median Age	43.1	45.5	47.1

Trends: 2008-2013 Annual Rate	Area	State	National
Population	-0.41%	0.32%	1.23%
Households	-0.24%	0.42%	1.26%
Families	-0.7%	0.09%	1.05%
Owner HHs	-0.41%	0.24%	1.07%
Median Household Income	3.81%	3.45%	3.19%

Households by Income	2000		2008		2013	
	Number	Percent	Number	Percent	Number	Percent
< \$15,000	519	13.2%	343	8.7%	267	6.9%
\$15,000 - \$24,999	629	16.0%	386	9.8%	258	6.7%
\$25,000 - \$34,999	466	11.8%	457	11.7%	312	8.1%
\$35,000 - \$49,999	758	19.2%	532	13.6%	499	12.9%
\$50,000 - \$74,999	811	20.6%	907	23.1%	917	23.7%
\$75,000 - \$99,999	399	10.1%	739	18.8%	776	20.0%
\$100,000 - \$149,999	253	6.4%	351	9.0%	578	14.9%
\$150,000 - \$199,000	39	1.0%	110	2.8%	121	3.1%
\$200,000+	66	1.7%	96	2.4%	147	3.8%
Median Household Income	\$40,485		\$55,680		\$67,124	
Average Household Income	\$51,255		\$67,722		\$79,372	
Per Capita Income	\$22,777		\$30,872		\$36,441	

Population by Age	2000		2008		2013	
	Number	Percent	Number	Percent	Number	Percent
0 - 4	471	5.4%	445	5.2%	426	5.1%
5 - 9	472	5.4%	431	5.1%	396	4.8%
10 - 14	469	5.4%	447	5.3%	430	5.2%
15 - 19	388	4.4%	432	5.1%	422	5.1%
20 - 24	318	3.6%	349	4.1%	363	4.4%
25 - 34	1,152	13.1%	837	9.9%	791	9.5%
35 - 44	1,385	15.8%	1,238	14.6%	1,042	12.5%
45 - 54	1,191	13.6%	1,347	15.9%	1,371	16.5%
55 - 64	835	9.5%	1,053	12.4%	1,223	14.7%
65 - 74	901	10.3%	729	8.6%	762	9.2%
75 - 84	865	9.9%	764	9.0%	643	7.7%
85+	314	3.6%	413	4.9%	447	5.4%

Data Note: Income is expressed in current dollars.

Source: U.S. Bureau of the Census, 2000 Census of Population and Housing. ESRI forecasts for 2008 and 2013.



Demographic and Income Profile - Appraisal Version

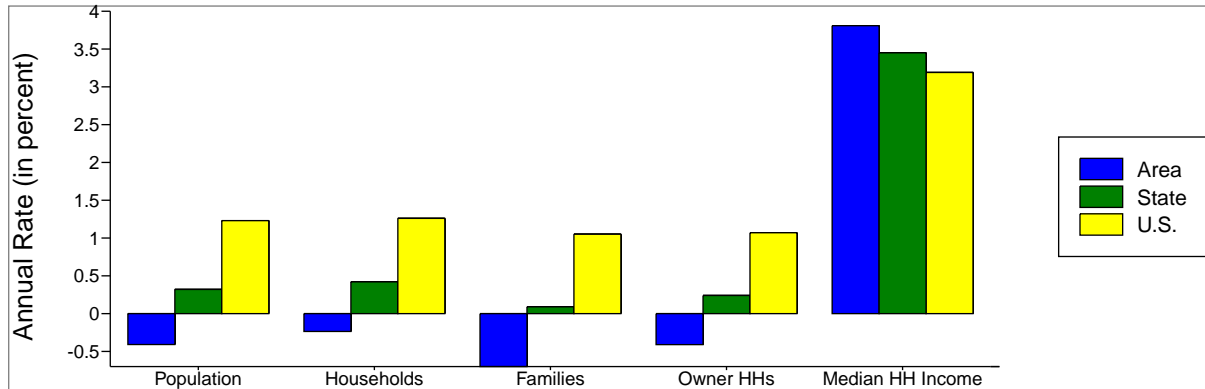
Prepared By: STDBOnline.com

Bridgeville (Allegheny County)
 Pennsylvania, United States

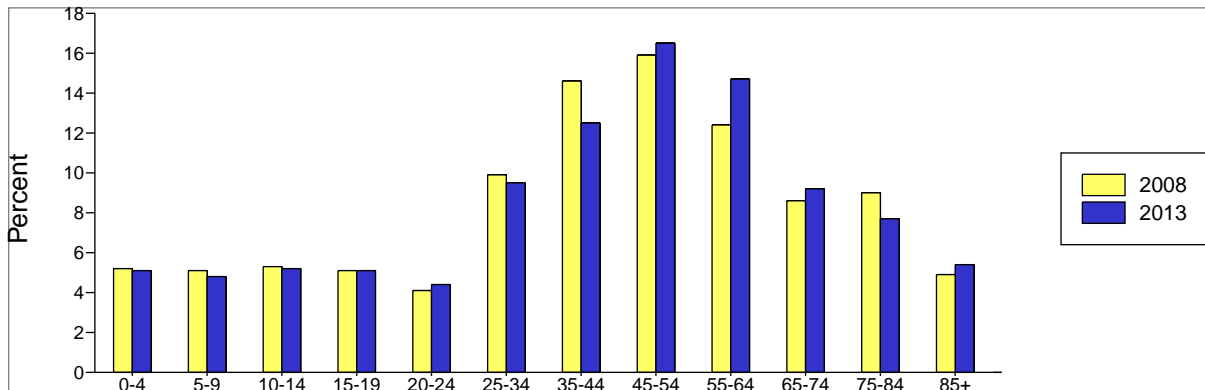
Site Type: Drive Time

Latitude 40.3604
 Longitude -80.105
 Drive Time: 5 minutes

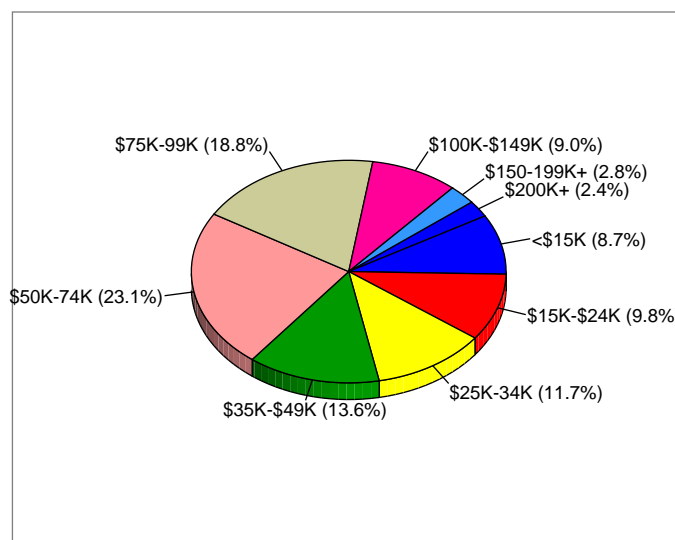
Trends 2008-2013



Population by Age



2008 Household Income



Source: ESRI forecasts for 2008 and 2013.



Demographic and Income Profile - Appraisal Version

Prepared By: STDBOnline.com

Bridgeville (Allegheny County)
Pennsylvania, United States

Site Type: Drive Time

Latitude 40.3604
Longitude -80.105
Drive Time: 10 minutes

Summary	2000	2008	2013
Population	87,579	86,721	85,024
Households	36,856	37,167	36,669
Families	23,749	23,226	22,450
Average Household Size	2.31	2.26	2.25
Owner Occupied HUs	26,894	26,943	26,317
Renter Occupied HUs	9,962	10,224	10,352
Median Age	41.9	45.0	46.4

Trends: 2008-2013 Annual Rate	Area	State	National
Population	-0.39%	0.32%	1.23%
Households	-0.27%	0.42%	1.26%
Families	-0.68%	0.09%	1.05%
Owner HHs	-0.47%	0.24%	1.07%
Median Household Income	2.99%	3.45%	3.19%

Households by Income	2000		2008		2013	
	Number	Percent	Number	Percent	Number	Percent
< \$15,000	3,942	10.7%	2,515	6.8%	2,012	5.5%
\$15,000 - \$24,999	4,411	12.0%	3,110	8.4%	2,084	5.7%
\$25,000 - \$34,999	4,293	11.6%	3,274	8.8%	2,517	6.9%
\$35,000 - \$49,999	5,779	15.7%	4,745	12.8%	3,964	10.8%
\$50,000 - \$74,999	7,094	19.2%	7,595	20.4%	7,630	20.8%
\$75,000 - \$99,999	4,458	12.1%	6,733	18.1%	6,741	18.4%
\$100,000 - \$149,999	3,915	10.6%	4,350	11.7%	5,869	16.0%
\$150,000 - \$199,000	1,281	3.5%	2,117	5.7%	2,025	5.5%
\$200,000+	1,688	4.6%	2,728	7.3%	3,825	10.4%
Median Household Income	\$50,014		\$65,022		\$75,327	
Average Household Income	\$69,172		\$91,453		\$108,761	
Per Capita Income	\$29,717		\$39,578		\$47,418	

Population by Age	2000		2008		2013	
	Number	Percent	Number	Percent	Number	Percent
0 - 4	4,959	5.7%	4,595	5.3%	4,438	5.2%
5 - 9	5,403	6.2%	4,816	5.6%	4,338	5.1%
10 - 14	5,772	6.6%	5,316	6.1%	4,955	5.8%
15 - 19	4,758	5.4%	5,111	5.9%	4,917	5.8%
20 - 24	3,088	3.5%	4,135	4.8%	4,167	4.9%
25 - 34	10,111	11.5%	7,910	9.1%	8,365	9.8%
35 - 44	14,287	16.3%	11,483	13.2%	9,484	11.2%
45 - 54	13,094	15.0%	14,167	16.3%	13,798	16.2%
55 - 64	8,512	9.7%	11,409	13.2%	12,925	15.2%
65 - 74	8,147	9.3%	7,125	8.2%	7,566	8.9%
75 - 84	6,777	7.7%	6,946	8.0%	5,972	7.0%
85+	2,670	3.0%	3,707	4.3%	4,098	4.8%

Data Note: Income is expressed in current dollars.

Source: U.S. Bureau of the Census, 2000 Census of Population and Housing. ESRI forecasts for 2008 and 2013.



Demographic and Income Profile - Appraisal Version

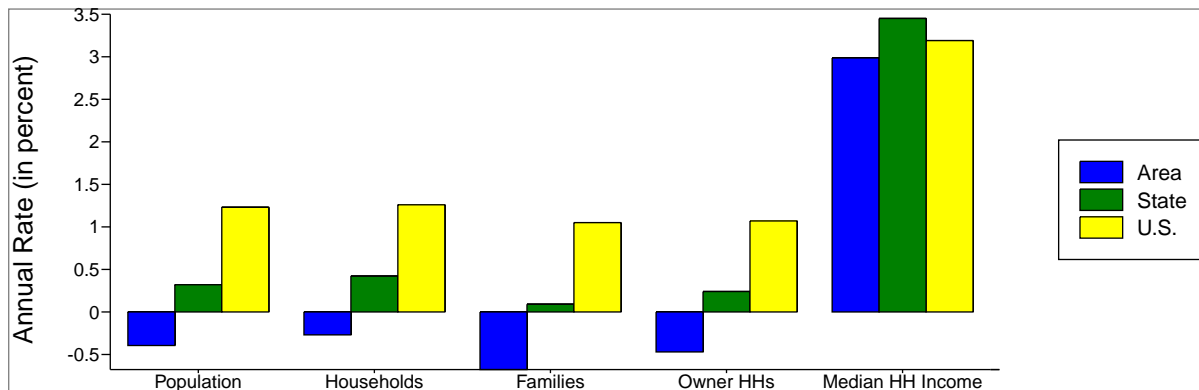
Prepared By: STDBOnline.com

Bridgeville (Allegheny County)
 Pennsylvania, United States

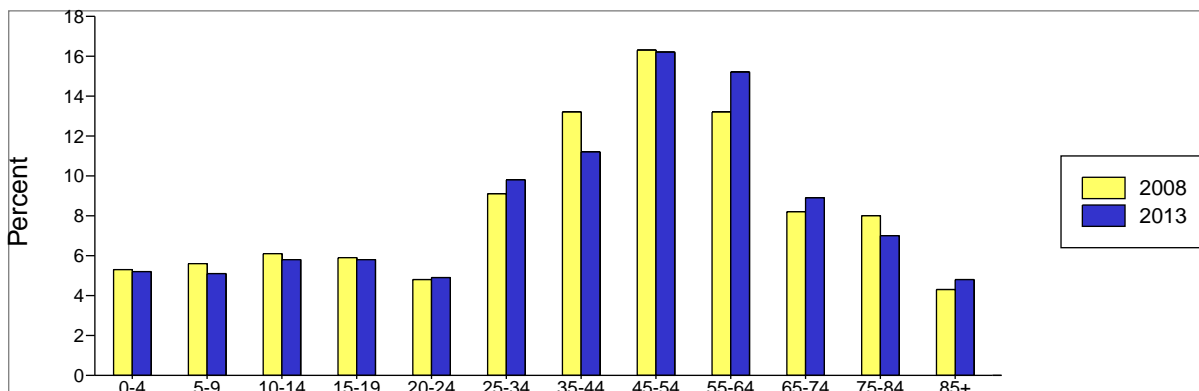
Site Type: Drive Time

Latitude 40.3604
 Longitude -80.105
 Drive Time: 10 minutes

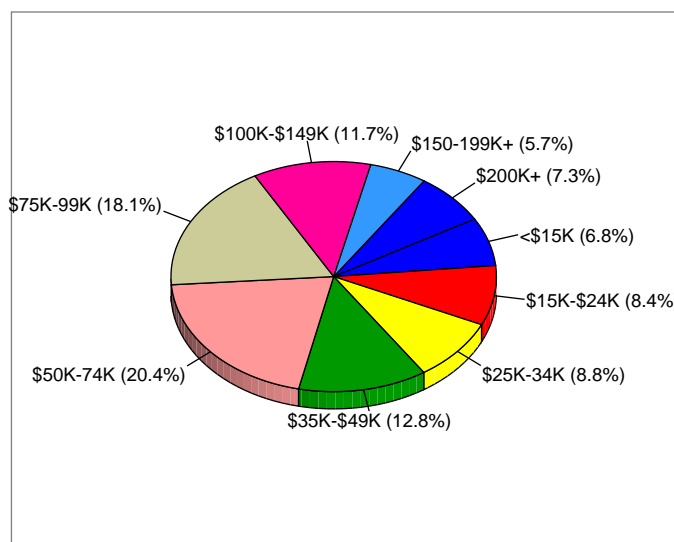
Trends 2008-2013



Population by Age



2008 Household Income



Source: ESRI forecasts for 2008 and 2013.



Demographic and Income Profile - Appraisal Version

Prepared By: STDBOnline.com

Bridgeville (Allegheny County)
Pennsylvania, United States

Site Type: Drive Time

Latitude 40.3604
Longitude -80.105
Drive Time: 15 minutes

Summary	2000	2008	2013
Population	283,945	279,850	275,156
Households	117,940	118,552	117,348
Families	75,516	73,573	71,360
Average Household Size	2.33	2.29	2.27
Owner Occupied HUs	85,756	85,470	83,676
Renter Occupied HUs	32,184	33,083	33,673
Median Age	40.5	43.1	44.7

Trends: 2008-2013 Annual Rate	Area	State	National
Population	-0.34%	0.32%	1.23%
Households	-0.2%	0.42%	1.26%
Families	-0.61%	0.09%	1.05%
Owner HHs	-0.42%	0.24%	1.07%
Median Household Income	3.16%	3.45%	3.19%

Households by Income	2000		2008		2013	
	Number	Percent	Number	Percent	Number	Percent
< \$15,000	14,623	12.4%	9,644	8.1%	7,815	6.7%
\$15,000 - \$24,999	14,786	12.5%	10,621	9.0%	7,506	6.4%
\$25,000 - \$34,999	14,416	12.2%	10,872	9.2%	8,369	7.1%
\$35,000 - \$49,999	19,527	16.6%	15,696	13.2%	13,309	11.3%
\$50,000 - \$74,999	24,146	20.5%	24,963	21.1%	24,816	21.1%
\$75,000 - \$99,999	13,703	11.6%	22,599	19.1%	21,603	18.4%
\$100,000 - \$149,999	10,380	8.8%	13,069	11.0%	19,645	16.7%
\$150,000 - \$199,000	3,042	2.6%	5,308	4.5%	5,603	4.8%
\$200,000+	3,291	2.8%	5,778	4.9%	8,682	7.4%
Median Household Income	\$45,998		\$61,430		\$71,775	
Average Household Income	\$61,080		\$80,390		\$95,507	
Per Capita Income	\$25,860		\$34,474		\$41,213	

Population by Age	2000		2008		2013	
	Number	Percent	Number	Percent	Number	Percent
0 - 4	15,876	5.6%	15,047	5.4%	14,545	5.3%
5 - 9	16,931	6.0%	15,316	5.5%	14,133	5.1%
10 - 14	17,927	6.3%	16,424	5.9%	15,660	5.7%
15 - 19	16,078	5.7%	16,684	6.0%	16,146	5.9%
20 - 24	13,197	4.6%	14,714	5.3%	14,661	5.3%
25 - 34	37,032	13.0%	30,436	10.9%	29,967	10.9%
35 - 44	47,100	16.6%	39,104	14.0%	33,707	12.3%
45 - 54	41,469	14.6%	45,395	16.2%	44,382	16.1%
55 - 64	27,226	9.6%	35,441	12.7%	40,577	14.7%
65 - 74	25,199	8.9%	22,252	8.0%	23,584	8.6%
75 - 84	19,427	6.8%	19,796	7.1%	17,461	6.3%
85+	6,484	2.3%	9,240	3.3%	10,332	3.8%

Data Note: Income is expressed in current dollars.

Source: U.S. Bureau of the Census, 2000 Census of Population and Housing. ESRI forecasts for 2008 and 2013.



Demographic and Income Profile - Appraisal Version

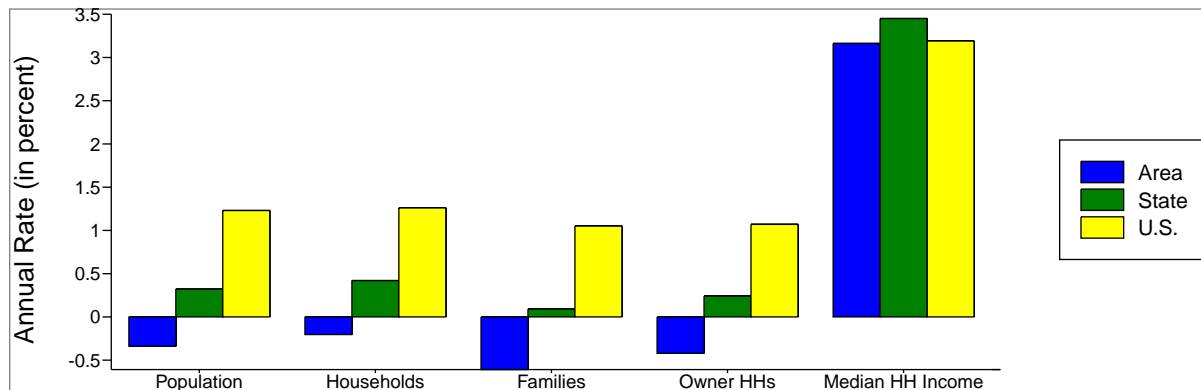
Prepared By: STDBOnline.com

Bridgeville (Allegheny County)
Pennsylvania, United States

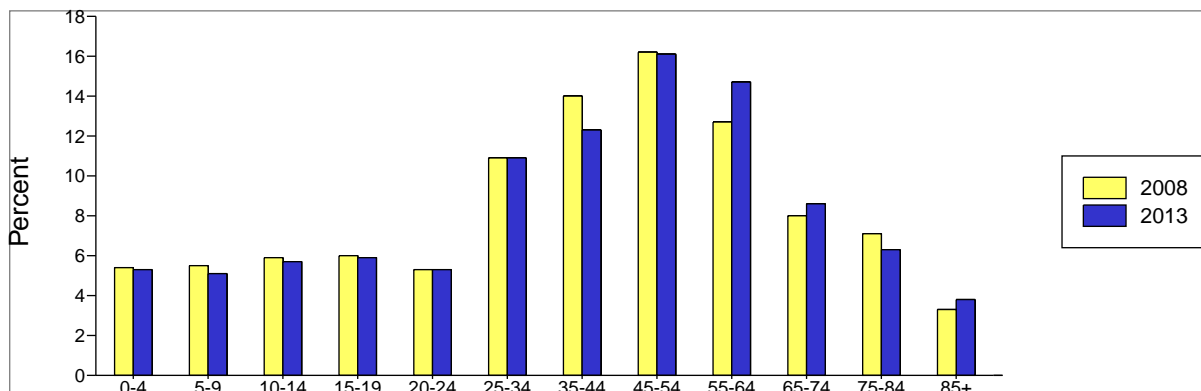
Site Type: Drive Time

Latitude 40.3604
Longitude -80.105
Drive Time: 15 minutes

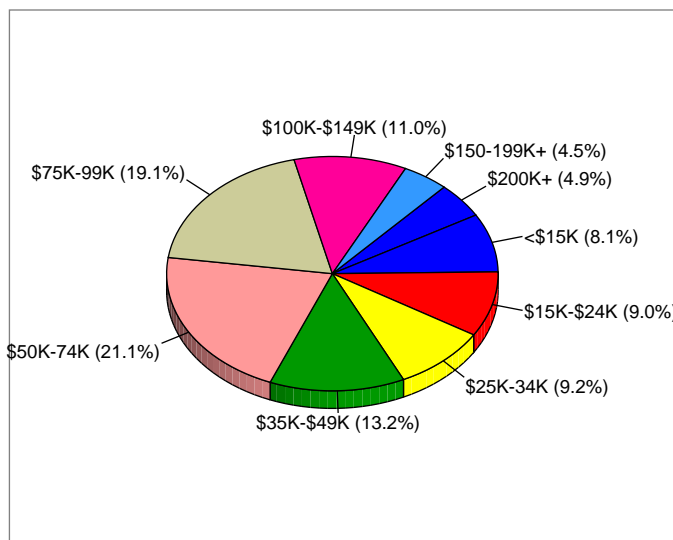
Trends 2008-2013



Population by Age



2008 Household Income



Source: ESRI forecasts for 2008 and 2013.



Latitude 40.3604
Longitude -80.105

Bridgeville (Allegheny
Pennsylvania, United S
Drive Time: 5 minutes

Bridgeville (Allegheny
Pennsylvania, United S
Drive Time: 10 minutes

Bridgeville (Allegheny
Pennsylvania, United S
Drive Time: 15 minutes



	Bridgeville (Allegheny Pennsylvania, United S Drive Time: 5 minutes	Bridgeville (Allegheny Pennsylvania, United S Drive Time: 10 minutes	Bridgeville (Allegheny Pennsylvania, United S Drive Time: 15 minutes
1990 Total Population	8,295	86,760	282,455
2000 Total Population	8,760	87,579	283,945
2000 Group Quarters	268	2,625	8,860
2000 Population Density	2,120.1	1,959.2	1,922.9
2008 Total Population	8,486	86,721	279,850
2008 Population Density	2,053.8	1,940.0	1,895.1
2013 Total Population	8,314	85,024	275,156
2008 - 2013 Annual Rate	-0.41%	-0.39%	-0.34%



1990 Households	3,512	35,120	112,726
2000 Households	3,947	36,856	117,940
2000 Average Household Size	2.15	2.31	2.33
2008 Households	3,921	37,167	118,552
2008 Average Household Size	2.1	2.26	2.29
2013 Households	3,875	36,669	117,348
2013 Average Household Size	2.08	2.25	2.27
2008 - 2013 Annual Rate	-0.24%	-0.27%	-0.2%
2000 Families	2,422	23,749	75,516
2000 Average Family Size	2.8	2.94	2.96
2008 Families	2,317	23,226	73,573
2008 Average Family Size	2.77	2.92	2.93
2013 Families	2,237	22,450	71,360
2013 Average Family Size	2.76	2.92	2.93
2008 - 2013 Annual Rate	-0.7%	-0.68%	-0.61%



2000 Housing Units	4,116	38,542	124,361
Owner Occupied Housing Units	69.4%	69.9%	68.9%
Renter Occupied Housing Units	26.4%	25.9%	25.9%
Vacant Housing Units	4.2%	4.2%	5.2%
2008 Housing Units	4,171	39,705	127,821
Owner Occupied Housing Units	67.5%	67.9%	66.9%
Renter Occupied Housing Units	26.5%	25.7%	25.9%
Vacant Housing Units	6.0%	6.4%	7.3%
2013 Housing Units	4,193	39,824	128,648
Owner Occupied Housing Units	65.8%	66.1%	65.0%
Renter Occupied Housing Units	26.6%	26.0%	26.2%
Vacant Housing Units	7.6%	7.9%	8.8%

Median Household Income

1990	\$30,350	\$36,825	\$33,755
2000	\$40,485	\$50,014	\$45,998
2008	\$55,680	\$65,022	\$61,430
2013	\$67,124	\$75,327	\$71,775

Median Home Value

1990	\$62,437	\$80,254	\$67,749
2000	\$91,659	\$116,097	\$97,997
2008	\$139,992	\$178,620	\$152,059
2013	\$145,326	\$191,099	\$163,246

Per Capita Income

1990	\$14,866	\$20,900	\$17,635
2000	\$22,777	\$29,717	\$25,860
2008	\$30,872	\$39,578	\$34,474
2013	\$36,441	\$47,418	\$41,213

Median Age

1990	40.9	39.1	37.4
2000	43.1	41.9	40.5
2008	45.5	45.0	43.1
2013	47.1	46.4	44.7

Data Note: Household population includes persons not residing in group quarters. Average Household Size is the household population divided by total households. Persons in families include the householder and persons related to the householder by birth, marriage, or adoption. Per Capita Income represents the income received by all persons aged 15 years and over divided by total population. Detail may not sum to totals due to rounding.

Source: U.S. Bureau of the Census, 2000 Census of Population and Housing. ESRI forecasts for 2008 and 2013. ESRI converted 1990 Census data into 2000 geography.



Latitude 40.3604
Longitude -80.105

**Bridgeville (Allegheny
Pennsylvania, United S
Drive Time: 5 minutes**

**Bridgeville (Allegheny
Pennsylvania, United S
Drive Time: 10 minutes**

**Bridgeville (Allegheny
Pennsylvania, United S
Drive Time: 15 minutes**



2000 Households by Income

Household Income Base	3,940	36,861	117,914
< \$15,000	13.2%	10.7%	12.4%
\$15,000 - \$24,999	16.0%	12.0%	12.5%
\$25,000 - \$34,999	11.8%	11.6%	12.2%
\$35,000 - \$49,999	19.2%	15.7%	16.6%
\$50,000 - \$74,999	20.6%	19.2%	20.5%
\$75,000 - \$99,999	10.1%	12.1%	11.6%
\$100,000 - \$149,999	6.4%	10.6%	8.8%
\$150,000 - \$199,999	1.0%	3.5%	2.6%
\$200,000+	1.7%	4.6%	2.8%
Average Household Income	\$51,255	\$69,172	\$61,080

2008 Households by Income

Household Income Base	3,921	37,167	118,550
< \$15,000	8.7%	6.8%	8.1%
\$15,000 - \$24,999	9.8%	8.4%	9.0%
\$25,000 - \$34,999	11.7%	8.8%	9.2%
\$35,000 - \$49,999	13.6%	12.8%	13.2%
\$50,000 - \$74,999	23.1%	20.4%	21.1%
\$75,000 - \$99,999	18.8%	18.1%	19.1%
\$100,000 - \$149,999	9.0%	11.7%	11.0%
\$150,000 - \$199,999	2.8%	5.7%	4.5%
\$200,000+	2.4%	7.3%	4.9%
Average Household Income	\$67,722	\$91,453	\$80,390

2013 Households by Income

Household Income Base	3,875	36,667	117,348
< \$15,000	6.9%	5.5%	6.7%
\$15,000 - \$24,999	6.7%	5.7%	6.4%
\$25,000 - \$34,999	8.1%	6.9%	7.1%
\$35,000 - \$49,999	12.9%	10.8%	11.3%
\$50,000 - \$74,999	23.7%	20.8%	21.1%
\$75,000 - \$99,999	20.0%	18.4%	18.4%
\$100,000 - \$149,999	14.9%	16.0%	16.7%
\$150,000 - \$199,999	3.1%	5.5%	4.8%
\$200,000+	3.8%	10.4%	7.4%
Average Household Income	\$79,372	\$108,761	\$95,507

2000 Owner Occupied HUs by Value

Total	2,868	26,861	85,825
<\$50,000	9.0%	6.6%	9.8%
\$50,000 - 99,999	54.1%	34.3%	42.0%
\$100,000 - 149,999	25.0%	26.5%	25.3%
\$150,000 - 199,999	5.5%	15.2%	11.8%
\$200,000 - \$299,999	3.6%	11.1%	7.4%
\$300,000 - 499,999	2.0%	4.9%	2.9%
\$500,000 - 999,999	0.6%	1.2%	0.7%
\$1,000,000+	0.3%	0.2%	0.2%
Average Home Value	\$109,617	\$144,766	\$122,878

2000 Specified Renter Occupied HUs by Contract Rent

Total	1,063	9,928	32,055
With Cash Rent	95.3%	97.3%	96.0%
No Cash Rent	4.7%	2.7%	4.0%
Median Rent	\$399	\$496	\$479
Average Rent	\$471	\$543	\$520

Data Note: Income represents the preceding year, expressed in current dollars. Household income includes wage and salary earnings, interest, dividends, net rents, pensions, SSI and welfare payments, child support and alimony. Specified Renter Occupied HUs exclude houses on 10+ acres. Average Rent excludes units paying no cash rent.

Source: U.S. Bureau of the Census, 2000 Census of Population and Housing. ESRI forecasts for 2008 and 2013.



Latitude 40.3604
Longitude -80.105

**Bridgeville (Allegheny
Pennsylvania, United S**
Drive Time: 5 minutes

**Bridgeville (Allegheny
Pennsylvania, United S**
Drive Time: 10 minutes

**Bridgeville (Allegheny
Pennsylvania, United S**
Drive Time: 15 minutes



2000 Population by Age

	Bridgeville (Allegheny Pennsylvania, United S Drive Time: 5 minutes)	Bridgeville (Allegheny Pennsylvania, United S Drive Time: 10 minutes)	Bridgeville (Allegheny Pennsylvania, United S Drive Time: 15 minutes)
Total	8,761	87,578	283,946
0 - 4	5.4%	5.7%	5.6%
5 - 9	5.4%	6.2%	6.0%
10 - 14	5.4%	6.6%	6.3%
15 - 19	4.4%	5.4%	5.7%
20 - 24	3.6%	3.5%	4.6%
25 - 34	13.1%	11.5%	13.0%
35 - 44	15.8%	16.3%	16.6%
45 - 54	13.6%	15.0%	14.6%
55 - 64	9.5%	9.7%	9.6%
65 - 74	10.3%	9.3%	8.9%
75 - 84	9.9%	7.7%	6.8%
85+	3.6%	3.0%	2.3%
18+	80.8%	77.7%	78.4%

2008 Population by Age

	Bridgeville (Allegheny Pennsylvania, United S Drive Time: 5 minutes)	Bridgeville (Allegheny Pennsylvania, United S Drive Time: 10 minutes)	Bridgeville (Allegheny Pennsylvania, United S Drive Time: 15 minutes)
Total	8,485	86,720	279,849
0 - 4	5.2%	5.3%	5.4%
5 - 9	5.1%	5.6%	5.5%
10 - 14	5.3%	6.1%	5.9%
15 - 19	5.1%	5.9%	6.0%
20 - 24	4.1%	4.8%	5.3%
25 - 34	9.9%	9.1%	10.9%
35 - 44	14.6%	13.2%	14.0%
45 - 54	15.9%	16.3%	16.2%
55 - 64	12.4%	13.2%	12.7%
65 - 74	8.6%	8.2%	8.0%
75 - 84	9.0%	8.0%	7.1%
85+	4.9%	4.3%	3.3%
18+	81.0%	79.0%	79.6%

2013 Population by Age

	Bridgeville (Allegheny Pennsylvania, United S Drive Time: 5 minutes)	Bridgeville (Allegheny Pennsylvania, United S Drive Time: 10 minutes)	Bridgeville (Allegheny Pennsylvania, United S Drive Time: 15 minutes)
Total	8,316	85,023	275,155
0 - 4	5.1%	5.2%	5.3%
5 - 9	4.8%	5.1%	5.1%
10 - 14	5.2%	5.8%	5.7%
15 - 19	5.1%	5.8%	5.9%
20 - 24	4.4%	4.9%	5.3%
25 - 34	9.5%	9.8%	10.9%
35 - 44	12.5%	11.2%	12.3%
45 - 54	16.5%	16.2%	16.1%
55 - 64	14.7%	15.2%	14.7%
65 - 74	9.2%	8.9%	8.6%
75 - 84	7.7%	7.0%	6.3%
85+	5.4%	4.8%	3.8%
18+	81.5%	80.0%	80.2%

2000 Population by Sex

	Bridgeville (Allegheny Pennsylvania, United S Drive Time: 5 minutes)	Bridgeville (Allegheny Pennsylvania, United S Drive Time: 10 minutes)	Bridgeville (Allegheny Pennsylvania, United S Drive Time: 15 minutes)
Males	46.6%	46.8%	47.8%
Females	53.4%	53.2%	52.2%

2008 Population by Sex

	Bridgeville (Allegheny Pennsylvania, United S Drive Time: 5 minutes)	Bridgeville (Allegheny Pennsylvania, United S Drive Time: 10 minutes)	Bridgeville (Allegheny Pennsylvania, United S Drive Time: 15 minutes)
Males	47.1%	47.0%	47.8%
Females	52.9%	53.0%	52.2%

2013 Population by Sex

	Bridgeville (Allegheny Pennsylvania, United S Drive Time: 5 minutes)	Bridgeville (Allegheny Pennsylvania, United S Drive Time: 10 minutes)	Bridgeville (Allegheny Pennsylvania, United S Drive Time: 15 minutes)
Males	47.3%	47.2%	47.9%
Females	52.7%	52.8%	52.1%

Source: U.S. Bureau of the Census, 2000 Census of Population and Housing. ESRI forecasts for 2008 and 2013.



Latitude 40.3604
Longitude -80.105

Bridgeville (Allegheny
Pennsylvania, United S
Drive Time: 5 minutes

Bridgeville (Allegheny
Pennsylvania, United S
Drive Time: 10 minutes

Bridgeville (Allegheny
Pennsylvania, United S
Drive Time: 15 minutes



2008 Population 15+ by Marital Status

	Bridgeville (Allegheny Pennsylvania, United S Drive Time: 5 minutes)	Bridgeville (Allegheny Pennsylvania, United S Drive Time: 10 minutes)	Bridgeville (Allegheny Pennsylvania, United S Drive Time: 15 minutes)
Total	7,163	71,994	233,065
Never Married	24.1%	24.8%	26.9%
Married	56.5%	58.4%	56.4%
Widowed	11.4%	8.9%	8.3%
Divorced	8.0%	7.9%	8.4%



2000 Population 16+ by Employment Status

	Bridgeville (Allegheny Pennsylvania, United S Drive Time: 5 minutes)	Bridgeville (Allegheny Pennsylvania, United S Drive Time: 10 minutes)	Bridgeville (Allegheny Pennsylvania, United S Drive Time: 15 minutes)
Total	7,253	70,270	229,662
In Labor Force	58.6%	60.6%	62.2%
Civilian Employed	55.1%	58.3%	59.5%
Civilian Unemployed	3.5%	2.3%	2.6%
In Armed Forces	0.0%	0.0%	0.1%
Not in Labor Force	41.4%	39.4%	37.8%

2008 Civilian Population 16+ in Labor Force

	Bridgeville (Allegheny Pennsylvania, United S Drive Time: 5 minutes)	Bridgeville (Allegheny Pennsylvania, United S Drive Time: 10 minutes)	Bridgeville (Allegheny Pennsylvania, United S Drive Time: 15 minutes)
Civilian Employed	95.3%	95.5%	95.0%
Civilian Unemployed	4.7%	4.5%	5.0%

2013 Civilian Population 16+ in Labor Force

	Bridgeville (Allegheny Pennsylvania, United S Drive Time: 5 minutes)	Bridgeville (Allegheny Pennsylvania, United S Drive Time: 10 minutes)	Bridgeville (Allegheny Pennsylvania, United S Drive Time: 15 minutes)
Civilian Employed	95.5%	95.7%	95.3%
Civilian Unemployed	4.5%	4.3%	4.7%

2000 Females 16+ by Employment Status and Age of Children

	Bridgeville (Allegheny Pennsylvania, United S Drive Time: 5 minutes)	Bridgeville (Allegheny Pennsylvania, United S Drive Time: 10 minutes)	Bridgeville (Allegheny Pennsylvania, United S Drive Time: 15 minutes)
Total	3,917	38,106	121,571
Own Children < 6 Only	8.0%	6.3%	6.3%
Employed/in Armed Forces	5.3%	3.8%	3.9%
Unemployed	0.3%	0.1%	0.1%
Not in Labor Force	2.4%	2.3%	2.2%
Own Children < 6 and 6-17 Only	4.1%	4.8%	4.8%
Employed/in Armed Forces	2.3%	2.5%	2.7%
Unemployed	0.0%	0.1%	0.1%
Not in Labor Force	1.8%	2.2%	2.0%
Own Children 6-17 Only	10.4%	15.6%	14.9%
Employed/in Armed Forces	7.4%	11.1%	10.9%
Unemployed	0.2%	0.2%	0.3%
Not in Labor Force	2.8%	4.3%	3.7%
No Own Children < 18	77.5%	73.3%	74.0%
Employed/in Armed Forces	34.0%	32.7%	35.3%
Unemployed	3.4%	1.6%	1.6%
Not in Labor Force	40.1%	39.0%	37.1%

Source: U.S. Bureau of the Census, 2000 Census of Population and Housing. ESRI forecasts for 2008 and 2013.



Latitude 40.3604
Longitude -80.105

Bridgeville (Allegheny
Pennsylvania, United S
Drive Time: 5 minutes

Bridgeville (Allegheny
Pennsylvania, United S
Drive Time: 10 minutes

Bridgeville (Allegheny
Pennsylvania, United S
Drive Time: 15 minutes



2008 Employed Population 16+ by Industry

	Bridgeville (Allegheny Pennsylvania, United S Drive Time: 5 minutes)	Bridgeville (Allegheny Pennsylvania, United S Drive Time: 10 minutes)	Bridgeville (Allegheny Pennsylvania, United S Drive Time: 15 minutes)
Total	4,147	42,839	141,687
Agriculture/Mining	0.6%	0.6%	0.6%
Construction	7.1%	5.4%	6.1%
Manufacturing	6.3%	6.1%	6.5%
Wholesale Trade	5.1%	3.9%	3.7%
Retail Trade	12.2%	11.4%	11.4%
Transportation/Utilities	6.5%	5.3%	5.8%
Information	2.4%	2.6%	2.6%
Finance/Insurance/Real Estate	7.9%	11.1%	10.3%
Services	49.8%	51.1%	49.4%
Public Administration	2.2%	2.7%	3.5%

2008 Employed Population 16+ by Occupation

	Bridgeville (Allegheny Pennsylvania, United S Drive Time: 5 minutes)	Bridgeville (Allegheny Pennsylvania, United S Drive Time: 10 minutes)	Bridgeville (Allegheny Pennsylvania, United S Drive Time: 15 minutes)
Total	4,147	42,840	141,685
White Collar	68.2%	76.6%	71.4%
Management/Business/Financial	16.5%	20.1%	17.9%
Professional	21.6%	28.9%	25.2%
Sales	15.0%	14.3%	13.1%
Administrative Support	15.1%	13.2%	15.2%
Services	14.8%	12.0%	14.2%
Blue Collar	17.0%	11.4%	14.4%
Farming/Forestry/Fishing	0.2%	0.1%	0.1%
Construction/Extraction	4.7%	3.2%	4.3%
Installation/Maintenance/Repair	4.4%	2.5%	3.1%
Production	3.2%	2.4%	2.8%
Transportation/Material Moving	4.5%	3.1%	4.1%



2000 Workers 16+ by Means of Transportation to Work

	Bridgeville (Allegheny Pennsylvania, United S Drive Time: 5 minutes)	Bridgeville (Allegheny Pennsylvania, United S Drive Time: 10 minutes)	Bridgeville (Allegheny Pennsylvania, United S Drive Time: 15 minutes)
Total	3,939	40,422	135,118
Drove Alone - Car, Truck, or Van	80.5%	76.4%	75.8%
Carpooled - Car, Truck, or Van	8.4%	8.5%	8.8%
Public Transportation	4.4%	9.3%	9.5%
Walked	2.4%	2.0%	2.3%
Other Means	1.0%	0.6%	0.7%
Worked at Home	3.2%	3.3%	2.9%

2000 Workers 16+ by Travel Time to Work

	Bridgeville (Allegheny Pennsylvania, United S Drive Time: 5 minutes)	Bridgeville (Allegheny Pennsylvania, United S Drive Time: 10 minutes)	Bridgeville (Allegheny Pennsylvania, United S Drive Time: 15 minutes)
Total	3,940	40,423	135,118
Did Not Work at Home	96.8%	96.7%	97.1%
Less than 5 minutes	3.3%	2.0%	2.2%
5 to 9 minutes	10.1%	10.0%	9.7%
10 to 19 minutes	31.5%	25.6%	28.1%
20 to 24 minutes	11.9%	13.8%	14.6%
25 to 34 minutes	20.1%	22.5%	21.3%
35 to 44 minutes	7.0%	8.0%	7.2%
45 to 59 minutes	7.7%	9.4%	8.6%
60 to 89 minutes	4.0%	4.1%	3.9%
90 or more minutes	1.2%	1.2%	1.4%
Worked at Home	3.2%	3.3%	2.9%
Average Travel Time to Work (in min)	24.0	25.6	25.2

2000 Households by Vehicles Available

	Bridgeville (Allegheny Pennsylvania, United S Drive Time: 5 minutes)	Bridgeville (Allegheny Pennsylvania, United S Drive Time: 10 minutes)	Bridgeville (Allegheny Pennsylvania, United S Drive Time: 15 minutes)
Total	3,943	36,847	117,982
None	13.3%	9.8%	10.6%
1	38.3%	39.0%	38.7%
2	40.0%	40.9%	39.8%
3	7.4%	8.5%	8.7%
4	1.0%	1.3%	1.7%
5+	0.0%	0.5%	0.6%
Average Number of Vehicles Available	1.4	1.5	1.5

Source: U.S. Bureau of the Census, 2000 Census of Population and Housing. ESRI forecasts for 2008.



Latitude 40.3604
Longitude -80.105

Bridgeville (Allegheny
Pennsylvania, United S
Drive Time: 5 minutes

Bridgeville (Allegheny
Pennsylvania, United S
Drive Time: 10 minutes

Bridgeville (Allegheny
Pennsylvania, United S
Drive Time: 15 minutes



2000 Households by Type

	Bridgeville (Allegheny Pennsylvania, United S	Bridgeville (Allegheny Pennsylvania, United S	Bridgeville (Allegheny Pennsylvania, United S
Total	3,947	36,856	117,939
Family Households	61.4%	64.4%	64.0%
Married-couple Family	49.7%	53.8%	52.1%
With Related Children	18.8%	23.3%	22.2%
Other Family (No Spouse)	11.7%	10.6%	12.0%
With Related Children	5.7%	5.6%	6.1%
Nonfamily Households	38.6%	35.6%	36.0%
Householder Living Alone	35.3%	31.8%	31.1%
Householder Not Living Alone	3.3%	3.8%	4.8%
Households with Related Children	24.6%	28.8%	28.3%
Households with Persons 65+	37.6%	31.5%	29.7%

2000 Households by Size

	Bridgeville (Allegheny Pennsylvania, United S	Bridgeville (Allegheny Pennsylvania, United S	Bridgeville (Allegheny Pennsylvania, United S
Total	3,947	36,856	117,940
1 Person Household	35.3%	31.8%	31.1%
2 Person Household	33.7%	33.8%	33.9%
3 Person Household	14.9%	14.7%	15.1%
4 Person Household	10.6%	12.7%	12.8%
5 Person Household	4.1%	5.1%	5.1%
6 Person Household	1.0%	1.4%	1.4%
7+ Person Household	0.4%	0.4%	0.5%

2000 Households by Year Householder Moved In

	Bridgeville (Allegheny Pennsylvania, United S	Bridgeville (Allegheny Pennsylvania, United S	Bridgeville (Allegheny Pennsylvania, United S
Total	3,941	36,848	117,982
Moved in 1999 to March 2000	14.2%	14.4%	14.4%
Moved in 1995 to 1998	24.7%	24.4%	23.3%
Moved in 1990 to 1994	12.3%	15.2%	14.6%
Moved in 1980 to 1989	14.1%	17.0%	16.4%
Moved in 1970 to 1979	11.4%	12.2%	12.4%
Moved in 1969 or Earlier	23.4%	16.7%	18.9%
Median Year Householder Moved In	1990	1991	1991



2000 Housing Units by Units in Structure

	Bridgeville (Allegheny Pennsylvania, United S	Bridgeville (Allegheny Pennsylvania, United S	Bridgeville (Allegheny Pennsylvania, United S
Total	4,117	38,485	124,391
1, Detached	71.0%	66.7%	67.0%
1, Attached	6.5%	6.8%	7.9%
2	4.2%	3.7%	4.8%
3 or 4	3.1%	2.7%	3.6%
5 to 9	2.9%	3.7%	3.7%
10 to 19	2.8%	4.1%	3.7%
20+	9.2%	11.5%	8.4%
Mobile Home	0.3%	0.8%	0.9%
Other	0.0%	0.0%	0.0%

2000 Housing Units by Year Structure Built

	Bridgeville (Allegheny Pennsylvania, United S	Bridgeville (Allegheny Pennsylvania, United S	Bridgeville (Allegheny Pennsylvania, United S
Total	4,114	38,550	124,375
1999 to March 2000	1.9%	1.0%	1.3%
1995 to 1998	8.3%	3.6%	3.5%
1990 to 1994	3.5%	3.6%	3.6%
1980 to 1989	3.8%	8.0%	7.6%
1970 to 1979	9.0%	12.9%	11.9%
1969 or Earlier	73.5%	71.0%	72.1%
Median Year Structure Built	1956	1957	1956

Source: U.S. Bureau of the Census, 2000 Census of Population and Housing.



Latitude 40.3604
Longitude -80.105

Bridgeville (Allegheny
Pennsylvania, United S
Drive Time: 5 minutes

Bridgeville (Allegheny
Pennsylvania, United S
Drive Time: 10 minutes

Bridgeville (Allegheny
Pennsylvania, United S
Drive Time: 15 minutes



2000 Population 3+ by School Enrollment

Total	8,420	84,452	274,631
Enrolled in Nursery/Preschool	2.1%	2.2%	1.9%
Enrolled in Kindergarten	0.8%	1.0%	1.2%
Enrolled in Grade 1-8	8.4%	10.9%	10.3%
Enrolled in Grade 9-12	4.5%	5.5%	5.3%
Enrolled in College	3.4%	2.7%	3.6%
Enrolled in Grad/Prof School	0.9%	1.5%	1.4%
Not Enrolled in School	79.9%	76.2%	76.2%

2008 Population 25+ by Educational Attainment

Total	6,383	62,745	201,665
Less than 9th Grade	3.5%	2.6%	2.5%
9th - 12th Grade, No Diploma	7.6%	5.4%	6.2%
High School Graduate	37.8%	25.5%	31.0%
Some College, No Degree	15.1%	14.4%	15.6%
Associate Degree	6.9%	6.7%	7.8%
Bachelor's Degree	21.6%	28.2%	24.0%
Graduate/Professional Degree	7.4%	17.2%	12.9%

Source: U.S. Bureau of the Census, 2000 Census of Population and Housing. ESRI forecasts for 2008.



Latitude 40.3604
Longitude -80.105


Bridgeville (Allegheny
Pennsylvania, United S
Drive Time: 5 minutes

Bridgeville (Allegheny
Pennsylvania, United S
Drive Time: 10 minutes

Bridgeville (Allegheny
Pennsylvania, United S
Drive Time: 15 minutes

Top 3 Tapestry Segments

1.	Rustbelt Retirees	Rustbelt Retirees	Rustbelt Retirees
2.	In Style	Connoisseurs	Cozy and Comfortable
3.	Prosperous Empty Nests	Prosperous Empty Nests	Prosperous Empty Nests

 **2008 Consumer Spending** shows the amount spent on a variety of goods and services by households that reside in the market area. Expenditures are shown by broad budget categories that are not mutually exclusive. Consumer spending does not equal business revenue.

Apparel & Services: Total \$	\$8,031,178	\$102,979,487	\$290,712,217
Average Spent	\$2,048.25	\$2,770.72	\$2,452.19
Spending Potential Index	76	103	91
Computers & Accessories: Total \$	\$827,430	\$10,944,849	\$30,661,036
Average Spent	\$211.03	\$294.48	\$258.63
Spending Potential Index	88	123	108
Education: Total \$	\$5,151,783	\$67,777,593	\$188,580,566
Average Spent	\$1,313.90	\$1,823.60	\$1,590.70
Spending Potential Index	96	133	116
Entertainment/Recreation: Total \$	\$13,377,474	\$171,218,013	\$480,770,555
Average Spent	\$3,411.75	\$4,606.72	\$4,055.36
Spending Potential Index	92	124	109
Food at Home: Total \$	\$17,877,625	\$222,016,241	\$629,237,615
Average Spent	\$4,559.46	\$5,973.48	\$5,307.69
Spending Potential Index	93	122	109
Food Away from Home: Total \$	\$12,418,996	\$156,833,889	\$444,055,355
Average Spent	\$3,167.30	\$4,219.71	\$3,745.66
Spending Potential Index	92	123	109
Health Care: Total \$	\$16,297,230	\$195,415,584	\$552,175,752
Average Spent	\$4,156.40	\$5,257.77	\$4,657.67
Spending Potential Index	102	128	114
HH Furnishings & Equipment: Total \$	\$7,662,183	\$101,361,474	\$281,853,345
Average Spent	\$1,954.14	\$2,727.19	\$2,377.47
Spending Potential Index	85	119	103
Investments: Total \$	\$4,128,328	\$56,108,121	\$149,635,352
Average Spent	\$1,052.88	\$1,509.62	\$1,262.19
Spending Potential Index	104	149	124
Retail Goods: Total \$	\$94,959,200	\$1,208,739,577	\$3,395,631,076
Average Spent	\$24,218.11	\$32,521.85	\$28,642.55
Spending Potential Index	89	120	106
Shelter: Total \$	\$55,478,774	\$728,581,800	\$2,020,087,019
Average Spent	\$14,149.14	\$19,602.92	\$17,039.67
Spending Potential Index	91	126	110
TV/Video/Sound Equipment: Total \$	\$5,218,328	\$65,678,966	\$186,034,280
Average Spent	\$1,330.87	\$1,767.13	\$1,569.22
Spending Potential Index	93	123	109
Travel: Total \$	\$6,942,188	\$91,952,981	\$251,989,912
Average Spent	\$1,770.51	\$2,474.05	\$2,125.56
Spending Potential Index	94	131	113
Vehicle Maintenance & Repairs: Total \$	\$3,509,429	\$45,105,449	\$126,528,846
Average Spent	\$895.03	\$1,213.59	\$1,067.29
Spending Potential Index	90	122	108

Data Note: The Spending Potential Index represents the amount spent in the area relative to a national average of 100.

Source: Consumer Spending data are derived from the 2004 and 2005 Consumer Expenditure Surveys, Bureau of Labor Statistics.