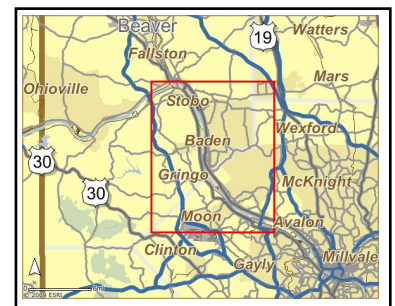
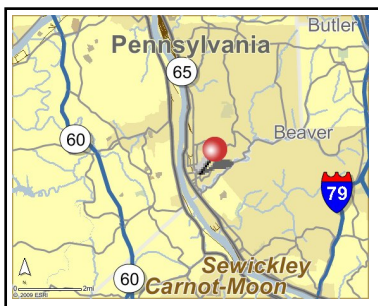
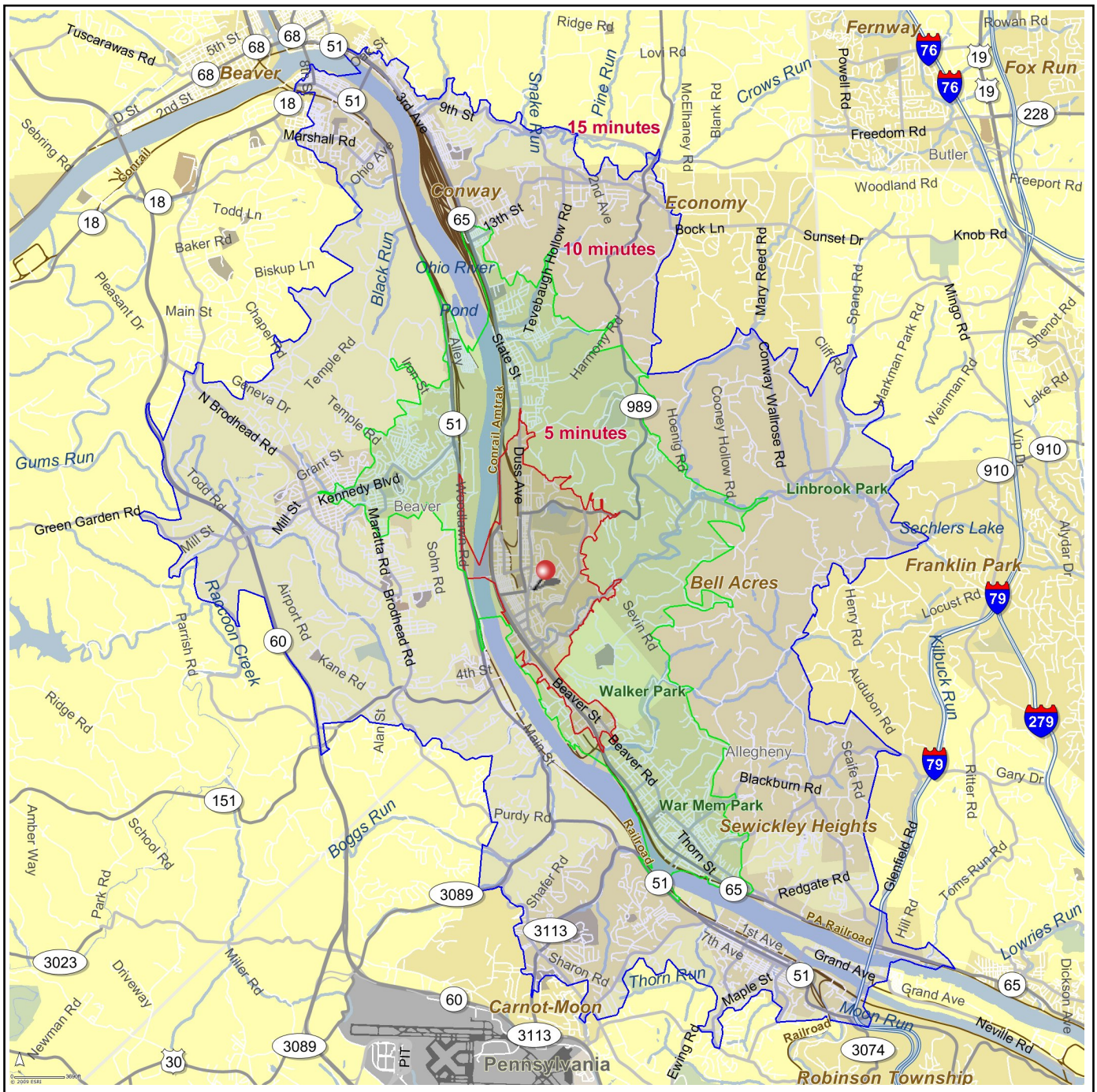


Site Map

Ambridge
Pennsylvania, United States

Prepared By: STDBOnline.com
April 4, 2009

Latitude 40.5903
Longitude -80.2232





Site Type: Drive Time	Ambridge Pennsylvania, United States Drive Time: 5 minutes	Ambridge Pennsylvania, United States Drive Time: 10 minutes	Ambridge Pennsylvania, United States Drive Time: 15 minutes
-----------------------	--	---	---

2008 Population

Total Population	10,764	32,580	84,490
Male Population	47.0%	46.3%	47.2%
Female Population	53.0%	53.7%	52.8%
Median Age	43.1	43.8	43.4

2008 Income

Median HH Income	\$37,293	\$42,241	\$50,219
Per Capita Income	\$21,834	\$27,216	\$28,546
Average HH Income	\$47,531	\$60,961	\$65,634

2008 Households

Total Households	4,976	14,561	36,352
Average Household Size	2.14	2.21	2.27
1990-2000 Annual Rate	-0.39%	-0.5%	-0.14%

2008 Housing

Owner Occupied Housing Units	52.1%	56.8%	64.0%
Renter Occupied Housing Units	34.3%	30.7%	26.9%
Vacant Housing Units	13.7%	12.5%	9.1%

Population

1990 Population	12,104	37,651	92,088
2000 Population	11,394	34,558	87,286
2008 Population	10,764	32,580	84,490
2013 Population	10,464	31,631	82,692
1990-2000 Annual Rate	-0.6%	-0.85%	-0.53%
2000-2008 Annual Rate	-0.69%	-0.71%	-0.39%
2008-2013 Annual Rate	-0.56%	-0.59%	-0.43%

In the identified market area, the current year population is 84,490. In 2000, the Census count in the market area was 87,286. The rate of change since 2000 was -0.39 percent annually. The five-year projection for the population in the market area is 82,692, representing a change of -0.43 percent annually from 2008 to 2013. Currently, the population is 47.2 percent male and 52.8 percent female.

Households

1990 Households	5,377	15,904	37,300
2000 Households	5,170	15,123	36,773
2008 Households	4,976	14,561	36,352
2013 Households	4,869	14,238	35,831
1990-2000 Annual Rate	-0.39%	-0.5%	-0.14%
2000-2008 Annual Rate	-0.46%	-0.46%	-0.14%
2008-2013 Annual Rate	-0.43%	-0.45%	-0.29%

The household count in this market area has changed from 36,773 in 2000 to 36,352 in the current year, a change of -0.14 percent annually. The five-year projection of households is 35,831, a change of -0.29 percent annually from the current year total. Average household size is currently 2.27, compared to 2.32 in the year 2000. The number of families in the current year is 23,003 in the market area.

Housing

Currently, 64.0 percent of the 39,997 housing units in the market area are owner occupied; 26.9 percent, renter occupied; and 9.1 percent are vacant. In 2000, there were 39,573 housing units— 65.8 percent owner occupied, 27.1 percent renter occupied and 7.1 percent vacant. The rate of change in housing units since 2000 is 0.13 percent. Median home value in the market area is \$127,598, compared to a median home value of \$192,285 for the U.S. In five years, median home value is projected to change by 0.8 percent annually to \$132,779. From 2000 to the current year, median home value changed by 5.48 percent annually.

Source: U.S. Bureau of the Census, 2000 Census of Population and Housing. ESRI forecasts for 2008 and 2013. ESRI converted 1990 Census data into 2000 geography.



Site Type: Drive Time	Ambridge Pennsylvania, United States Drive Time: 5 minutes	Ambridge Pennsylvania, United States Drive Time: 10 minutes	Ambridge Pennsylvania, United States Drive Time: 15 minutes
Median Household Income			
1990 Median HH Income	\$17,843	\$21,368	\$24,891
2000 Median HH Income	\$28,660	\$32,115	\$36,927
2008 Median HH Income	\$37,293	\$42,241	\$50,219
2013 Median HH Income	\$43,887	\$50,545	\$60,401
1990-2000 Annual Rate	4.85%	4.16%	4.02%
2000-2008 Annual Rate	3.24%	3.38%	3.8%
2008-2013 Annual Rate	3.31%	3.65%	3.76%
Per Capita Income			
1990 Per Capita Income	\$10,739	\$13,566	\$13,986
2000 Per Capita Income	\$16,684	\$21,364	\$21,698
2008 Per Capita Income	\$21,834	\$27,216	\$28,546
2013 Per Capita Income	\$25,259	\$31,365	\$33,424
1990-2000 Annual Rate	4.5%	4.65%	4.49%
2000-2008 Annual Rate	3.31%	2.98%	3.38%
2008-2013 Annual Rate	2.96%	2.88%	3.21%
Average Household Income			
1990 Average Household Income	\$24,574	\$32,197	\$34,418
2000 Average Household Income	\$36,356	\$48,378	\$50,712
2008 Average HH Income	\$47,531	\$60,961	\$65,634
2013 Average HH Income	\$54,659	\$69,773	\$76,318
1990-2000 Annual Rate	3.99%	4.16%	3.95%
2000-2008 Annual Rate	3.3%	2.84%	3.18%
2008-2013 Annual Rate	2.83%	2.74%	3.06%

Households by Income

Current median household income is \$50,219 in the market area, compared to \$53,154 for all U.S. households. Median household income is projected to be \$60,401 in five years. In 2000, median household income was \$36,927, compared to \$24,891 in 1990.

Current average household income is \$65,634 in this market area, compared to \$73,126 for all U.S. households. Average household income is projected to be \$76,318 in five years. In 2000, average household income was \$50,712, compared to \$34,418 in 1990.

Current per capita income is \$28,546 in the market area, compared to the U.S. per capita income of \$27,916. The per capita income is projected to be \$33,424 in five years. In 2000, the per capita income was \$21,698, compared to \$13,986 in 1990.

Population by Employment

Total Businesses	597	1,810	3,938
Total Employees	4,051	12,944	30,197

Currently, 93.8 percent of the civilian labor force in the identified market area is employed and 6.2 percent are unemployed. In comparison, 93.4 percent of the U.S. civilian labor force is employed, and 6.6 percent are unemployed. In five years the rate of employment in the market area will be 94.1 percent of the civilian labor force, and unemployment will be 5.9 percent. The percentage of the U.S. civilian labor force that will be employed in five years is 93.9 percent, and 6.1 percent will be unemployed. In 2000, 59.5 percent of the population aged 16 years or older in the market area participated in the labor force, and 0.1 percent were in the Armed Forces.

In the current year, the occupational distribution of the employed population is:

- 60.3 percent in white collar jobs (compared to 60.2 percent of U.S. employment)
- 19.2 percent in service jobs (compared to 16.5 percent of U.S. employment)
- 20.5 percent in blue collar jobs (compared to 23.3 percent of U.S. employment)

In 2000, 82.0 percent of the market area population drove alone to work, and 2.2 percent worked at home. The average travel time to work in 2000 was 23.6 minutes in the market area, compared to the U.S. average of 25.5 minutes.

Population by Education

In 2008, the educational attainment of the population aged 25 years or older in the market area was distributed as follows:

- 12.3 percent had not earned a high school diploma (16.4 percent in the U.S.)
- 38.1 percent were high school graduates only (29.6 percent in the U.S.)
- 9.1 percent had completed an Associate degree (7.2 percent in the U.S.)
- 15.3 percent had a Bachelor's degree (17.0 percent in the U.S.)
- 8.2 percent had earned a Master's/Professional/Doctorate Degree (9.7 percent in the U.S.)



Demographic and Income Profile - Appraisal Version

Prepared By: STDBOnline.com

Ambridge Latitude **40.5903**
Pennsylvania, United States Longitude **-80.2232**
 Site Type: Drive Time Drive Time: **5 minutes**

Summary	2000	2008	2013
Population	11,394	10,764	10,464
Households	5,170	4,976	4,869
Families	3,036	2,814	2,688
Average Household Size	2.18	2.14	2.13
Owner Occupied HUs	3,148	3,001	2,831
Renter Occupied HUs	2,022	1,975	2,038
Median Age	41.4	43.1	44.6

Trends: 2008-2013 Annual Rate	Area	State	National
Population	-0.56%	0.32%	1.23%
Households	-0.43%	0.42%	1.26%
Families	-0.91%	0.09%	1.05%
Owner HHs	-1.16%	0.24%	1.07%
Median Household Income	3.31%	3.45%	3.19%

Households by Income	2000		2008		2013	
	Number	Percent	Number	Percent	Number	Percent
< \$15,000	1,407	27.1%	1,023	20.6%	831	17.1%
\$15,000 - \$24,999	866	16.7%	705	14.2%	589	12.1%
\$25,000 - \$34,999	761	14.6%	625	12.6%	514	10.6%
\$35,000 - \$49,999	933	17.9%	785	15.8%	769	15.8%
\$50,000 - \$74,999	754	14.5%	917	18.4%	994	20.4%
\$75,000 - \$99,999	276	5.3%	578	11.6%	673	13.8%
\$100,000 - \$149,999	160	3.1%	223	4.5%	335	6.9%
\$150,000 - \$199,000	14	0.3%	80	1.6%	85	1.7%
\$200,000+	29	0.6%	40	0.8%	78	1.6%
Median Household Income	\$28,660		\$37,293		\$43,887	
Average Household Income	\$36,356		\$47,531		\$54,659	
Per Capita Income	\$16,684		\$21,834		\$25,259	

Population by Age	2000		2008		2013	
	Number	Percent	Number	Percent	Number	Percent
0 - 4	702	6.2%	671	6.2%	647	6.2%
5 - 9	672	5.9%	619	5.7%	574	5.5%
10 - 14	663	5.8%	584	5.4%	545	5.2%
15 - 19	638	5.6%	592	5.5%	550	5.3%
20 - 24	579	5.1%	634	5.9%	628	6.0%
25 - 34	1,427	12.5%	1,224	11.4%	1,209	11.6%
35 - 44	1,644	14.4%	1,323	12.3%	1,128	10.8%
45 - 54	1,445	12.7%	1,577	14.6%	1,475	14.1%
55 - 64	959	8.4%	1,228	11.4%	1,416	13.5%
65 - 74	1,195	10.5%	911	8.5%	969	9.3%
75 - 84	1,162	10.2%	959	8.9%	822	7.9%
85+	308	2.7%	446	4.1%	501	4.8%

Data Note: Income is expressed in current dollars.

Source: U.S. Bureau of the Census, 2000 Census of Population and Housing. ESRI forecasts for 2008 and 2013.



Demographic and Income Profile - Appraisal Version

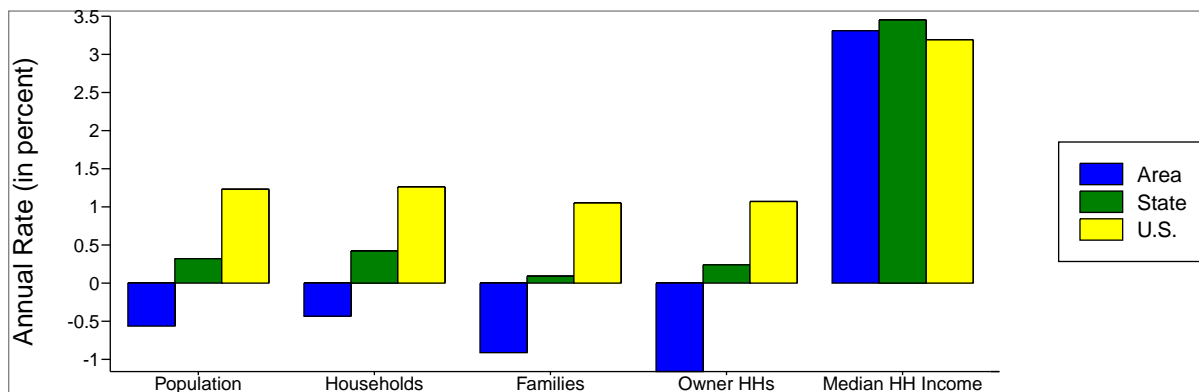
Prepared By: STDBOnline.com

Ambridge
Pennsylvania, United States

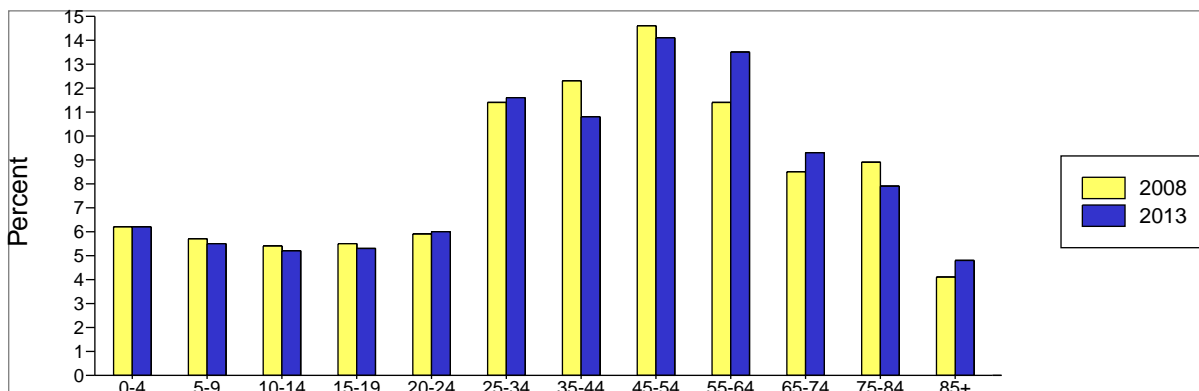
Site Type: Drive Time

Latitude 40.5903
Longitude -80.2232
Drive Time: 5 minutes

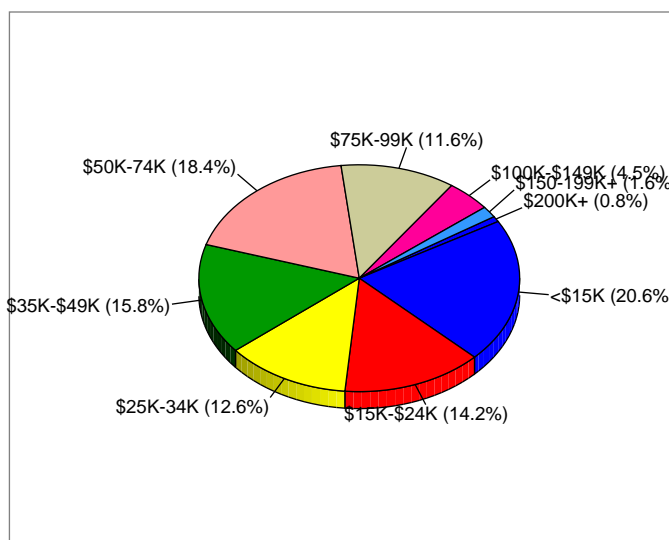
Trends 2008-2013



Population by Age



2008 Household Income



Source: ESRI forecasts for 2008 and 2013.



Demographic and Income Profile - Appraisal Version

Prepared By: STDBOnline.com

Ambridge Latitude **40.5903**
Pennsylvania, United States Longitude **-80.2232**
Site Type: Drive Time Drive Time: **10 minutes**

Summary	2000	2008	2013
Population	34,558	32,580	31,631
Households	15,123	14,561	14,238
Families	9,440	8,779	8,397
Average Household Size	2.26	2.21	2.19
Owner Occupied HUs	9,904	9,453	9,024
Renter Occupied HUs	5,219	5,108	5,215
Median Age	41.8	43.8	45.4

Trends: 2008-2013 Annual Rate	Area	State	National
Population	-0.59%	0.32%	1.23%
Households	-0.45%	0.42%	1.26%
Families	-0.89%	0.09%	1.05%
Owner HHs	-0.92%	0.24%	1.07%
Median Household Income	3.65%	3.45%	3.19%

Households by Income	2000		2008		2013	
	Number	Percent	Number	Percent	Number	Percent
< \$15,000	3,526	23.3%	2,492	17.1%	1,989	14.0%
\$15,000 - \$24,999	2,521	16.6%	1,984	13.6%	1,568	11.0%
\$25,000 - \$34,999	2,053	13.6%	1,766	12.1%	1,478	10.4%
\$35,000 - \$49,999	2,627	17.3%	2,071	14.2%	2,010	14.1%
\$50,000 - \$74,999	2,277	15.0%	2,765	19.0%	2,862	20.1%
\$75,000 - \$99,999	940	6.2%	1,850	12.7%	2,204	15.5%
\$100,000 - \$149,999	636	4.2%	817	5.6%	1,172	8.2%
\$150,000 - \$199,000	180	1.2%	313	2.1%	335	2.4%
\$200,000+	383	2.5%	504	3.5%	620	4.4%
Median Household Income	\$32,115		\$42,241		\$50,545	
Average Household Income	\$48,378		\$60,961		\$69,773	
Per Capita Income	\$21,364		\$27,216		\$31,365	

Population by Age	2000		2008		2013	
	Number	Percent	Number	Percent	Number	Percent
0 - 4	2,026	5.9%	1,917	5.9%	1,842	5.8%
5 - 9	2,141	6.2%	1,850	5.7%	1,713	5.4%
10 - 14	2,207	6.4%	1,920	5.9%	1,771	5.6%
15 - 19	2,022	5.9%	1,915	5.9%	1,783	5.6%
20 - 24	1,624	4.7%	1,767	5.4%	1,734	5.5%
25 - 34	3,953	11.4%	3,409	10.5%	3,319	10.5%
35 - 44	5,056	14.6%	4,049	12.4%	3,478	11.0%
45 - 54	4,673	13.5%	4,925	15.1%	4,662	14.7%
55 - 64	3,221	9.3%	4,013	12.3%	4,590	14.5%
65 - 74	3,680	10.6%	2,805	8.6%	2,970	9.4%
75 - 84	3,124	9.0%	2,770	8.5%	2,362	7.5%
85+	829	2.4%	1,241	3.8%	1,406	4.4%

Data Note: Income is expressed in current dollars.

Source: U.S. Bureau of the Census, 2000 Census of Population and Housing. ESRI forecasts for 2008 and 2013.



Demographic and Income Profile - Appraisal Version

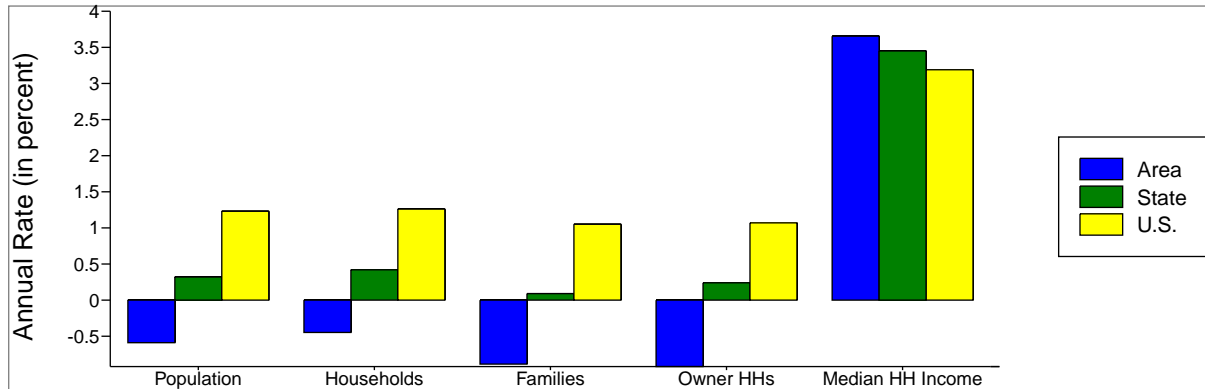
Prepared By: STDBOnline.com

Ambridge
Pennsylvania, United States

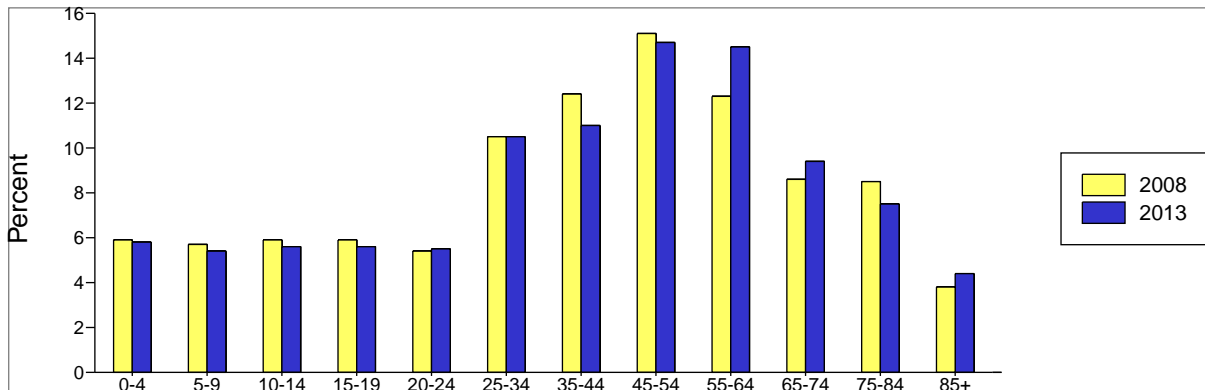
Site Type: Drive Time

Latitude 40.5903
Longitude -80.2232
Drive Time: 10 minutes

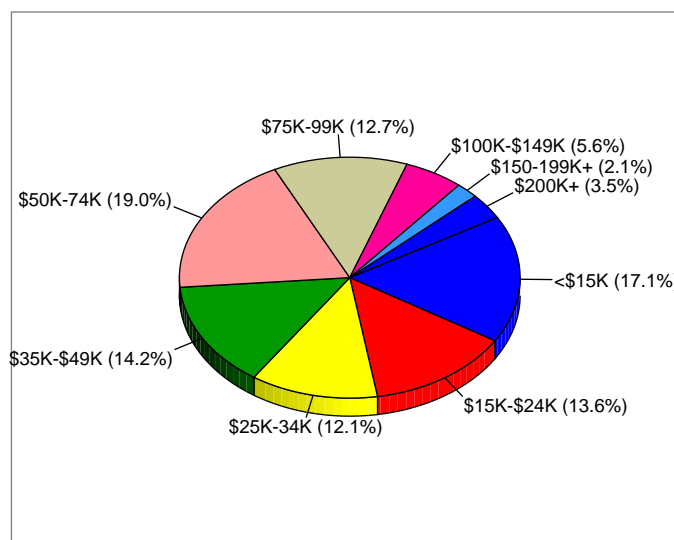
Trends 2008-2013



Population by Age



2008 Household Income



Source: ESRI forecasts for 2008 and 2013.



Demographic and Income Profile - Appraisal Version

Prepared By: STDBOnline.com

Ambridge
Pennsylvania, United States

Site Type: Drive Time

Latitude 40.5903
Longitude -80.2232
Drive Time: 15 minutes

Summary	2000	2008	2013
Population	87,286	84,490	82,692
Households	36,773	36,352	35,831
Families	24,006	23,003	22,217
Average Household Size	2.32	2.27	2.26
Owner Occupied HUs	26,033	25,588	24,877
Renter Occupied HUs	10,740	10,764	10,955
Median Age	41.1	43.4	45.0

Trends: 2008-2013 Annual Rate	Area	State	National
Population	-0.43%	0.32%	1.23%
Households	-0.29%	0.42%	1.26%
Families	-0.69%	0.09%	1.05%
Owner HHs	-0.56%	0.24%	1.07%
Median Household Income	3.76%	3.45%	3.19%

Households by Income	2000		2008		2013	
	Number	Percent	Number	Percent	Number	Percent
< \$15,000	7,030	19.1%	4,843	13.3%	3,875	10.8%
\$15,000 - \$24,999	5,430	14.7%	4,104	11.3%	3,176	8.9%
\$25,000 - \$34,999	4,997	13.6%	3,939	10.8%	3,192	8.9%
\$35,000 - \$49,999	6,357	17.3%	5,209	14.3%	4,717	13.2%
\$50,000 - \$74,999	6,845	18.6%	7,351	20.2%	7,268	20.3%
\$75,000 - \$99,999	3,005	8.2%	5,998	16.5%	6,392	17.8%
\$100,000 - \$149,999	1,951	5.3%	2,863	7.9%	4,509	12.6%
\$150,000 - \$199,000	436	1.2%	920	2.5%	1,154	3.2%
\$200,000+	773	2.1%	1,126	3.1%	1,548	4.3%
Median Household Income	\$36,927		\$50,219		\$60,401	
Average Household Income	\$50,712		\$65,634		\$76,318	
Per Capita Income	\$21,698		\$28,546		\$33,424	

Population by Age	2000		2008		2013	
	Number	Percent	Number	Percent	Number	Percent
0 - 4	4,827	5.5%	4,655	5.5%	4,497	5.4%
5 - 9	5,411	6.2%	4,625	5.5%	4,335	5.2%
10 - 14	5,543	6.4%	4,904	5.8%	4,578	5.5%
15 - 19	5,348	6.1%	5,293	6.3%	4,984	6.0%
20 - 24	4,319	4.9%	4,715	5.6%	4,677	5.7%
25 - 34	10,132	11.6%	8,827	10.4%	8,597	10.4%
35 - 44	13,619	15.6%	11,191	13.2%	9,667	11.7%
45 - 54	12,144	13.9%	13,290	15.7%	12,818	15.5%
55 - 64	8,407	9.6%	10,545	12.5%	12,150	14.7%
65 - 74	8,927	10.2%	7,183	8.5%	7,575	9.2%
75 - 84	6,777	7.8%	6,583	7.8%	5,733	6.9%
85+	1,831	2.1%	2,678	3.2%	3,084	3.7%

Data Note: Income is expressed in current dollars.

Source: U.S. Bureau of the Census, 2000 Census of Population and Housing. ESRI forecasts for 2008 and 2013.



Demographic and Income Profile - Appraisal Version

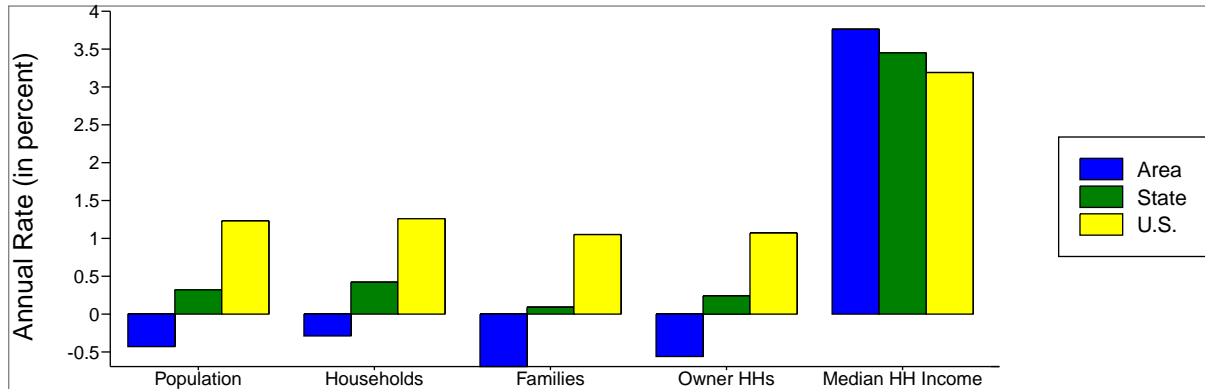
Prepared By: STDBOnline.com

Ambridge
Pennsylvania, United States

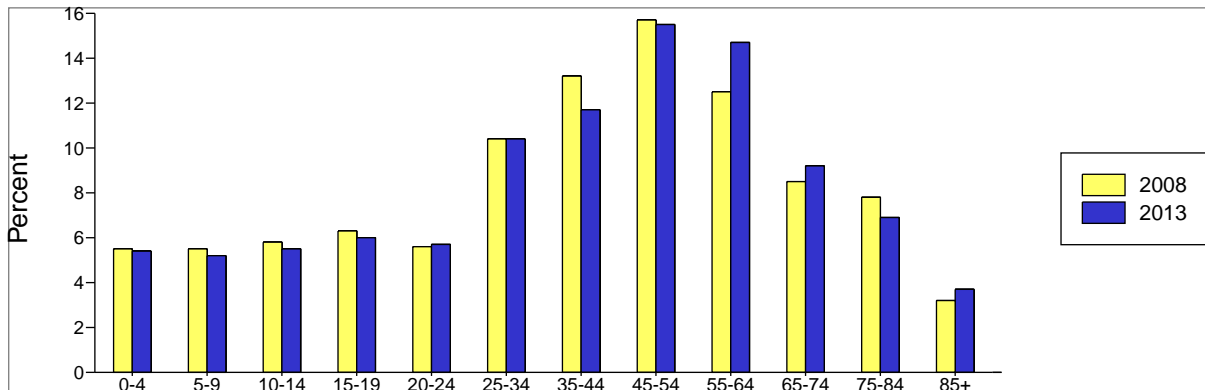
Site Type: Drive Time

Latitude 40.5903
Longitude -80.2232
Drive Time: 15 minutes

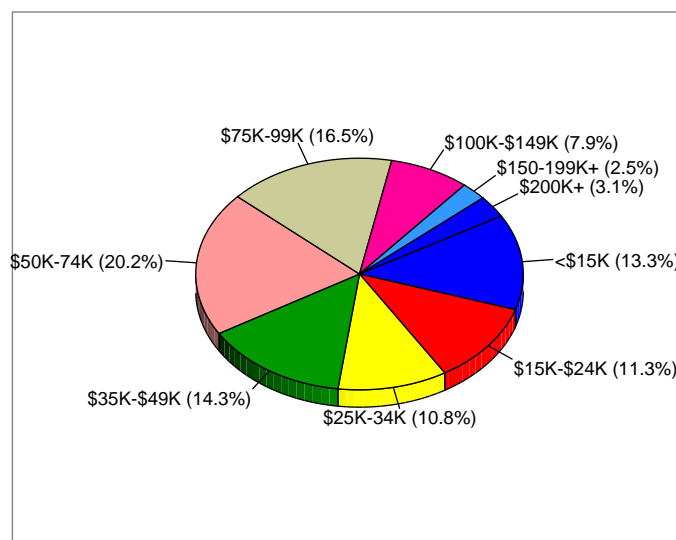
Trends 2008-2013



Population by Age



2008 Household Income



Source: ESRI forecasts for 2008 and 2013.



Latitude **40.5903**
 Longitude **-80.2232**

Ambridge	Ambridge	Ambridge
Pennsylvania, United S	Pennsylvania, United S	Pennsylvania, United S
Drive Time: 5 minutes	Drive Time: 10 minutes	Drive Time: 15 minutes



1990 Total Population	12,104	37,651	92,088
2000 Total Population	11,394	34,558	87,286
2000 Group Quarters	119	429	1,826
2000 Population Density	2,570.2	1,606.4	1,178.7
2008 Total Population	10,764	32,580	84,490
2008 Population Density	2,428.1	1,514.4	1,141.0
2013 Total Population	10,464	31,631	82,692
2008 - 2013 Annual Rate	-0.56%	-0.59%	-0.43%



1990 Households	5,377	15,904	37,300
2000 Households	5,170	15,123	36,773
2000 Average Household Size	2.18	2.26	2.32
2008 Households	4,976	14,561	36,352
2008 Average Household Size	2.14	2.21	2.27
2013 Households	4,869	14,238	35,831
2013 Average Household Size	2.13	2.19	2.26
2008 - 2013 Annual Rate	-0.43%	-0.45%	-0.29%
2000 Families	3,036	9,440	24,006
2000 Average Family Size	2.85	2.89	2.92
2008 Families	2,814	8,779	23,003
2008 Average Family Size	2.84	2.87	2.89
2013 Families	2,688	8,397	22,217
2013 Average Family Size	2.83	2.86	2.88
2008 - 2013 Annual Rate	-0.91%	-0.89%	-0.69%



2000 Housing Units	5,793	16,729	39,573
Owner Occupied Housing Units	54.4%	59.3%	65.8%
Renter Occupied Housing Units	35.0%	31.2%	27.1%
Vacant Housing Units	10.6%	9.5%	7.1%
2008 Housing Units	5,763	16,650	39,997
Owner Occupied Housing Units	52.1%	56.8%	64.0%
Renter Occupied Housing Units	34.3%	30.7%	26.9%
Vacant Housing Units	13.7%	12.5%	9.1%
2013 Housing Units	5,974	17,170	40,766
Owner Occupied Housing Units	47.4%	52.6%	61.0%
Renter Occupied Housing Units	34.1%	30.4%	26.9%
Vacant Housing Units	18.5%	17.1%	12.1%

Median Household Income

1990	\$17,843	\$21,368	\$24,891
2000	\$28,660	\$32,115	\$36,927
2008	\$37,293	\$42,241	\$50,219
2013	\$43,887	\$50,545	\$60,401

Median Home Value

1990	\$40,202	\$43,680	\$51,470
2000	\$60,427	\$71,302	\$82,135
2008	\$92,979	\$110,269	\$127,598
2013	\$96,897	\$115,238	\$132,779

Per Capita Income

1990	\$10,739	\$13,566	\$13,986
2000	\$16,684	\$21,364	\$21,698
2008	\$21,834	\$27,216	\$28,546
2013	\$25,259	\$31,365	\$33,424

Median Age

1990	41.6	39.9	38.2
2000	41.4	41.8	41.1
2008	43.1	43.8	43.4
2013	44.6	45.4	45.0

Data Note: Household population includes persons not residing in group quarters. Average Household Size is the household population divided by total households. Persons in families include the householder and persons related to the householder by birth, marriage, or adoption. Per Capita Income represents the income received by all persons aged 15 years and over divided by total population. Detail may not sum to totals due to rounding.

Source: U.S. Bureau of the Census, 2000 Census of Population and Housing. ESRI forecasts for 2008 and 2013. ESRI converted 1990 Census data into 2000 geography.



Latitude 40.5903
Longitude -80.2232

Ambridge
Pennsylvania, United S
Drive Time: 5 minutes

Ambridge
Pennsylvania, United S
Drive Time: 10 minutes

Ambridge
Pennsylvania, United S
Drive Time: 15 minutes



2000 Households by Income

Household Income Base	Ambridge	Ambridge	Ambridge
< \$15,000	5,200 27.1%	15,143 23.3%	36,824 19.1%
\$15,000 - \$24,999	16.7%	16.6%	14.7%
\$25,000 - \$34,999	14.6%	13.6%	13.6%
\$35,000 - \$49,999	17.9%	17.3%	17.3%
\$50,000 - \$74,999	14.5%	15.0%	18.6%
\$75,000 - \$99,999	5.3%	6.2%	8.2%
\$100,000 - \$149,999	3.1%	4.2%	5.3%
\$150,000 - \$199,999	0.3%	1.2%	1.2%
\$200,000+	0.6%	2.5%	2.1%
Average Household Income	\$36,356	\$48,378	\$50,712

2008 Households by Income

Household Income Base	4,976	14,562	36,353
< \$15,000	20.6%	17.1%	13.3%
\$15,000 - \$24,999	14.2%	13.6%	11.3%
\$25,000 - \$34,999	12.6%	12.1%	10.8%
\$35,000 - \$49,999	15.8%	14.2%	14.3%
\$50,000 - \$74,999	18.4%	19.0%	20.2%
\$75,000 - \$99,999	11.6%	12.7%	16.5%
\$100,000 - \$149,999	4.5%	5.6%	7.9%
\$150,000 - \$199,999	1.6%	2.1%	2.5%
\$200,000+	0.8%	3.5%	3.1%
Average Household Income	\$47,531	\$60,961	\$65,634

2013 Households by Income

Household Income Base	4,868	14,238	35,831
< \$15,000	17.1%	14.0%	10.8%
\$15,000 - \$24,999	12.1%	11.0%	8.9%
\$25,000 - \$34,999	10.6%	10.4%	8.9%
\$35,000 - \$49,999	15.8%	14.1%	13.2%
\$50,000 - \$74,999	20.4%	20.1%	20.3%
\$75,000 - \$99,999	13.8%	15.5%	17.8%
\$100,000 - \$149,999	6.9%	8.2%	12.6%
\$150,000 - \$199,999	1.7%	2.4%	3.2%
\$200,000+	1.6%	4.4%	4.3%
Average Household Income	\$54,659	\$69,773	\$76,318

2000 Owner Occupied HUs by Value

Total	3,139	9,891	26,020
<\$50,000	35.6%	27.8%	19.3%
\$50,000 - 99,999	49.5%	45.2%	46.6%
\$100,000 - 149,999	9.0%	11.1%	19.1%
\$150,000 - 199,999	3.8%	5.1%	7.1%
\$200,000 - \$299,999	1.1%	4.0%	3.5%
\$300,000 - 499,999	0.9%	3.6%	2.4%
\$500,000 - 999,999	0.1%	2.7%	1.5%
\$1,000,000+	0.0%	0.5%	0.5%
Average Home Value	\$72,592	\$113,031	\$110,867

2000 Specified Renter Occupied HUs by Contract Rent

Total	2,034	5,196	10,677
With Cash Rent	94.0%	93.6%	93.5%
No Cash Rent	6.0%	6.4%	6.5%
Median Rent	\$321	\$334	\$355
Average Rent	\$311	\$342	\$365

Data Note: Income represents the preceding year, expressed in current dollars. Household income includes wage and salary earnings, interest, dividends, net rents, pensions, SSI and welfare payments, child support and alimony. Specified Renter Occupied HUs exclude houses on 10+ acres. Average Rent excludes units paying no cash rent.

Source: U.S. Bureau of the Census, 2000 Census of Population and Housing. ESRI forecasts for 2008 and 2013.



Latitude 40.5903
Longitude -80.2232

Ambridge
Pennsylvania, United S
Drive Time: 5 minutes

Ambridge
Pennsylvania, United S
Drive Time: 10 minutes

Ambridge
Pennsylvania, United S
Drive Time: 15 minutes



2000 Population by Age

	Ambridge	Ambridge	Ambridge
	Pennsylvania, United S	Pennsylvania, United S	Pennsylvania, United S
	Drive Time: 5 minutes	Drive Time: 10 minutes	Drive Time: 15 minutes
Total	11,394	34,556	87,285
0 - 4	6.2%	5.9%	5.5%
5 - 9	5.9%	6.2%	6.2%
10 - 14	5.8%	6.4%	6.4%
15 - 19	5.6%	5.9%	6.1%
20 - 24	5.1%	4.7%	4.9%
25 - 34	12.5%	11.4%	11.6%
35 - 44	14.4%	14.6%	15.6%
45 - 54	12.7%	13.5%	13.9%
55 - 64	8.4%	9.3%	9.6%
65 - 74	10.5%	10.6%	10.2%
75 - 84	10.2%	9.0%	7.8%
85+	2.7%	2.4%	2.1%
18+	78.7%	77.8%	78.3%

2008 Population by Age

Total	10,768	32,581	84,489
0 - 4	6.2%	5.9%	5.5%
5 - 9	5.7%	5.7%	5.5%
10 - 14	5.4%	5.9%	5.8%
15 - 19	5.5%	5.9%	6.3%
20 - 24	5.9%	5.4%	5.6%
25 - 34	11.4%	10.5%	10.4%
35 - 44	12.3%	12.4%	13.2%
45 - 54	14.6%	15.1%	15.7%
55 - 64	11.4%	12.3%	12.5%
65 - 74	8.5%	8.6%	8.5%
75 - 84	8.9%	8.5%	7.8%
85+	4.1%	3.8%	3.2%
18+	79.3%	78.9%	79.5%

2013 Population by Age

Total	10,464	31,630	82,695
0 - 4	6.2%	5.8%	5.4%
5 - 9	5.5%	5.4%	5.2%
10 - 14	5.2%	5.6%	5.5%
15 - 19	5.3%	5.6%	6.0%
20 - 24	6.0%	5.5%	5.7%
25 - 34	11.6%	10.5%	10.4%
35 - 44	10.8%	11.0%	11.7%
45 - 54	14.1%	14.7%	15.5%
55 - 64	13.5%	14.5%	14.7%
65 - 74	9.3%	9.4%	9.2%
75 - 84	7.9%	7.5%	6.9%
85+	4.8%	4.4%	3.7%
18+	80.0%	79.6%	80.3%

2000 Population by Sex

Males	47.2%	46.3%	47.2%
Females	52.8%	53.7%	52.8%

2008 Population by Sex

Males	47.0%	46.3%	47.2%
Females	53.0%	53.7%	52.8%

2013 Population by Sex

Males	47.1%	46.4%	47.2%
Females	52.9%	53.6%	52.8%

Source: U.S. Bureau of the Census, 2000 Census of Population and Housing. ESRI forecasts for 2008 and 2013.



Latitude 40.5903
Longitude -80.2232

Ambridge
Pennsylvania, United S
Drive Time: 5 minutes

Ambridge
Pennsylvania, United S
Drive Time: 10 minutes

Ambridge
Pennsylvania, United S
Drive Time: 15 minutes



2008 Population 15+ by Marital Status

	Ambridge	Ambridge	Ambridge
	Pennsylvania, United S	Pennsylvania, United S	Pennsylvania, United S
	Drive Time: 5 minutes	Drive Time: 10 minutes	Drive Time: 15 minutes
Total	8,890	26,893	70,306
Never Married	30.0%	28.1%	26.5%
Married	47.5%	51.1%	54.9%
Widowed	11.8%	10.3%	9.1%
Divorced	10.7%	10.5%	9.5%



2000 Population 16+ by Employment Status

Total	9,206	27,580	70,363
In Labor Force	56.6%	56.0%	59.5%
Civilian Employed	53.1%	52.5%	56.3%
Civilian Unemployed	3.3%	3.4%	3.1%
In Armed Forces	0.1%	0.1%	0.1%
Not in Labor Force	43.4%	44.0%	40.5%

2008 Civilian Population 16+ in Labor Force

Civilian Employed	92.0%	92.1%	93.8%
Civilian Unemployed	8.0%	7.9%	6.2%

2013 Civilian Population 16+ in Labor Force

Civilian Employed	92.4%	92.5%	94.1%
Civilian Unemployed	7.6%	7.5%	5.9%

2000 Females 16+ by Employment Status and Age of Children

Total	4,931	15,062	37,856
Own Children < 6 Only	6.1%	5.9%	6.0%
Employed/in Armed Forces	3.3%	3.2%	3.5%
Unemployed	0.3%	0.3%	0.3%
Not in Labor Force	2.5%	2.5%	2.2%
Own Children < 6 and 6-17 Only	5.9%	5.2%	5.0%
Employed/in Armed Forces	3.7%	3.0%	2.9%
Unemployed	0.3%	0.1%	0.2%
Not in Labor Force	1.9%	2.1%	2.0%
Own Children 6-17 Only	13.6%	15.2%	15.3%
Employed/in Armed Forces	9.8%	10.4%	11.0%
Unemployed	0.7%	0.6%	0.4%
Not in Labor Force	3.1%	4.3%	3.9%
No Own Children < 18	74.3%	73.7%	73.7%
Employed/in Armed Forces	29.0%	29.7%	32.3%
Unemployed	1.6%	1.9%	1.9%
Not in Labor Force	43.7%	42.1%	39.5%

Source: U.S. Bureau of the Census, 2000 Census of Population and Housing. ESRI forecasts for 2008 and 2013.



Latitude 40.5903
Longitude -80.2232

Ambridge
Pennsylvania, United S
Drive Time: 5 minutes

Ambridge
Pennsylvania, United S
Drive Time: 10 minutes

Ambridge
Pennsylvania, United S
Drive Time: 15 minutes



2008 Employed Population 16+ by Industry

	Ambridge	Ambridge	Ambridge
	Pennsylvania, United S	Pennsylvania, United S	Pennsylvania, United S
Total	4,797	14,381	40,479
Agriculture/Mining	0.1%	0.1%	0.2%
Construction	4.0%	5.0%	5.4%
Manufacturing	8.4%	8.2%	8.8%
Wholesale Trade	1.3%	2.2%	2.7%
Retail Trade	13.8%	12.3%	12.3%
Transportation/Utilities	8.5%	8.9%	11.8%
Information	1.5%	1.8%	1.5%
Finance/Insurance/Real Estate	6.7%	6.2%	6.7%
Services	51.4%	52.0%	47.7%
Public Administration	4.4%	3.2%	3.0%

2008 Employed Population 16+ by Occupation

	Ambridge	Ambridge	Ambridge
	Pennsylvania, United S	Pennsylvania, United S	Pennsylvania, United S
Total	4,796	14,382	40,478
White Collar	56.9%	59.8%	60.3%
Management/Business/Financial	9.3%	11.8%	12.6%
Professional	17.8%	20.7%	19.5%
Sales	12.9%	11.5%	11.5%
Administrative Support	16.9%	15.9%	16.7%
Services	22.0%	20.7%	19.2%
Blue Collar	21.1%	19.5%	20.5%
Farming/Forestry/Fishing	0.1%	0.1%	0.2%
Construction/Extraction	3.5%	3.9%	4.6%
Installation/Maintenance/Repair	4.4%	3.5%	4.0%
Production	4.5%	4.6%	4.5%
Transportation/Material Moving	8.6%	7.4%	7.3%



2000 Workers 16+ by Means of Transportation to Work

	Ambridge	Ambridge	Ambridge
	Pennsylvania, United S	Pennsylvania, United S	Pennsylvania, United S
Total	4,824	14,263	39,033
Drove Alone - Car, Truck, or Van	75.3%	77.9%	82.0%
Carpooled - Car, Truck, or Van	12.1%	10.6%	8.6%
Public Transportation	5.5%	4.2%	3.1%
Walked	5.1%	4.2%	3.1%
Other Means	0.9%	0.9%	1.0%
Worked at Home	1.1%	2.3%	2.2%

2000 Workers 16+ by Travel Time to Work

	Ambridge	Ambridge	Ambridge
	Pennsylvania, United S	Pennsylvania, United S	Pennsylvania, United S
Total	4,824	14,264	39,033
Did Not Work at Home	98.9%	97.7%	97.8%
Less than 5 minutes	4.8%	3.3%	3.4%
5 to 9 minutes	13.6%	13.4%	11.3%
10 to 19 minutes	26.3%	25.3%	31.1%
20 to 24 minutes	15.7%	16.1%	15.9%
25 to 34 minutes	18.0%	20.9%	18.7%
35 to 44 minutes	7.5%	6.7%	6.1%
45 to 59 minutes	8.5%	7.9%	6.5%
60 to 89 minutes	3.6%	2.9%	3.0%
90 or more minutes	1.0%	1.3%	1.8%
Worked at Home	1.1%	2.3%	2.2%
Average Travel Time to Work (in min)	23.5	23.9	23.6

2000 Households by Vehicles Available

	Ambridge	Ambridge	Ambridge
	Pennsylvania, United S	Pennsylvania, United S	Pennsylvania, United S
Total	5,174	15,099	36,760
None	18.7%	15.4%	11.6%
1	45.9%	43.1%	38.9%
2	26.7%	31.7%	36.8%
3	7.1%	7.8%	10.1%
4	1.0%	1.5%	1.9%
5+	0.5%	0.6%	0.7%
Average Number of Vehicles Available	1.3	1.4	1.5

Source: U.S. Bureau of the Census, 2000 Census of Population and Housing. ESRI forecasts for 2008.



Latitude 40.5903
Longitude -80.2232

Ambridge
Pennsylvania, United S
Drive Time: 5 minutes

Ambridge
Pennsylvania, United S
Drive Time: 10 minutes

Ambridge
Pennsylvania, United S
Drive Time: 15 minutes



2000 Households by Type

	Ambridge	Ambridge	Ambridge
	Pennsylvania, United S	Pennsylvania, United S	Pennsylvania, United S
	Drive Time: 5 minutes	Drive Time: 10 minutes	Drive Time: 15 minutes
Total	5,169	15,124	36,773
Family Households	58.7%	62.4%	65.3%
Married-couple Family	39.2%	43.7%	49.2%
With Related Children	15.1%	16.8%	19.4%
Other Family (No Spouse)	19.5%	18.7%	16.0%
With Related Children	10.4%	10.6%	8.9%
Nonfamily Households	41.3%	37.6%	34.7%
Householder Living Alone	36.6%	34.0%	31.0%
Householder Not Living Alone	4.6%	3.6%	3.7%
Households with Related Children	25.5%	27.4%	28.3%
Households with Persons 65+	38.1%	36.7%	34.1%

2000 Households by Size

	Ambridge	Ambridge	Ambridge
	Pennsylvania, United S	Pennsylvania, United S	Pennsylvania, United S
	Drive Time: 5 minutes	Drive Time: 10 minutes	Drive Time: 15 minutes
Total	5,170	15,123	36,773
1 Person Household	36.6%	34.0%	31.0%
2 Person Household	32.2%	33.2%	34.2%
3 Person Household	15.0%	15.2%	15.8%
4 Person Household	9.8%	10.8%	12.2%
5 Person Household	4.4%	4.7%	4.7%
6 Person Household	1.4%	1.5%	1.4%
7+ Person Household	0.6%	0.7%	0.6%

2000 Households by Year Householder Moved In

	Ambridge	Ambridge	Ambridge
	Pennsylvania, United S	Pennsylvania, United S	Pennsylvania, United S
	Drive Time: 5 minutes	Drive Time: 10 minutes	Drive Time: 15 minutes
Total	5,173	15,099	36,759
Moved in 1999 to March 2000	14.7%	12.4%	12.1%
Moved in 1995 to 1998	20.9%	22.8%	22.0%
Moved in 1990 to 1994	13.3%	13.8%	14.4%
Moved in 1980 to 1989	14.9%	14.9%	15.3%
Moved in 1970 to 1979	9.3%	11.0%	12.3%
Moved in 1969 or Earlier	26.9%	25.0%	23.9%
Median Year Householder Moved In	1989	1989	1989



2000 Housing Units by Units in Structure

	Ambridge	Ambridge	Ambridge
	Pennsylvania, United S	Pennsylvania, United S	Pennsylvania, United S
	Drive Time: 5 minutes	Drive Time: 10 minutes	Drive Time: 15 minutes
Total	5,783	16,700	39,554
1, Detached	61.7%	65.3%	70.4%
1, Attached	4.6%	6.0%	5.6%
2	9.6%	7.1%	4.9%
3 or 4	11.5%	7.0%	5.6%
5 to 9	5.4%	5.5%	4.6%
10 to 19	2.7%	3.1%	2.7%
20+	4.2%	5.2%	4.8%
Mobile Home	0.2%	0.7%	1.3%
Other	0.0%	0.0%	0.0%

2000 Housing Units by Year Structure Built

	Ambridge	Ambridge	Ambridge
	Pennsylvania, United S	Pennsylvania, United S	Pennsylvania, United S
	Drive Time: 5 minutes	Drive Time: 10 minutes	Drive Time: 15 minutes
Total	5,794	16,721	39,554
1999 to March 2000	0.0%	0.1%	0.4%
1995 to 1998	0.6%	0.7%	1.7%
1990 to 1994	0.2%	0.6%	2.2%
1980 to 1989	1.9%	2.8%	5.1%
1970 to 1979	6.1%	7.1%	11.7%
1969 or Earlier	91.3%	88.6%	78.8%
Median Year Structure Built	1941	1944	1952

Source: U.S. Bureau of the Census, 2000 Census of Population and Housing.



Latitude 40.5903
 Longitude -80.2232

Ambridge
 Pennsylvania, United S
 Drive Time: 5 minutes

Ambridge
 Pennsylvania, United S
 Drive Time: 10 minutes

Ambridge
 Pennsylvania, United S
 Drive Time: 15 minutes



2000 Population 3+ by School Enrollment

	Ambridge	Ambridge	Ambridge
Total	10,978	33,232	84,381
Enrolled in Nursery/Preschool	1.8%	2.0%	1.9%
Enrolled in Kindergarten	1.3%	1.3%	1.3%
Enrolled in Grade 1-8	9.9%	10.4%	10.4%
Enrolled in Grade 9-12	5.1%	5.4%	5.2%
Enrolled in College	2.9%	2.4%	3.8%
Enrolled in Grad/Prof School	1.2%	0.8%	0.7%
Not Enrolled in School	77.8%	77.6%	76.8%

2008 Population 25+ by Educational Attainment

	Ambridge	Ambridge	Ambridge
Total	7,665	23,211	60,298
Less than 9th Grade	4.0%	3.4%	3.3%
9th - 12th Grade, No Diploma	14.3%	11.2%	9.0%
High School Graduate	39.5%	38.0%	38.1%
Some College, No Degree	15.6%	15.9%	17.0%
Associate Degree	9.2%	8.5%	9.1%
Bachelor's Degree	11.5%	14.0%	15.3%
Graduate/Professional Degree	5.9%	9.0%	8.2%

Source: U.S. Bureau of the Census, 2000 Census of Population and Housing. ESRI forecasts for 2008.



Latitude 40.5903
Longitude -80.2232


Ambridge
Pennsylvania, United S
Drive Time: 5 minutes

Ambridge
Pennsylvania, United S
Drive Time: 10 minutes

Ambridge
Pennsylvania, United S
Drive Time: 15 minutes

Top 3 Tapestry Segments

1.	Simple Living	Rustbelt Retirees	Rustbelt Retirees
2.	Rustbelt Retirees	Simple Living	Simple Living
3.	Great Expectations	Retirement Communities	Cozy and Comfortable

 **2008 Consumer Spending** shows the amount spent on a variety of goods and services by households that reside in the market area. Expenditures are shown by broad budget categories that are not mutually exclusive. Consumer spending does not equal business revenue.

Apparel & Services: Total \$	\$7,398,592	\$27,337,952	\$72,821,362
Average Spent	\$1,486.86	\$1,877.48	\$2,003.23
Spending Potential Index	55	70	75
Computers & Accessories: Total \$	\$779,579	\$2,813,942	\$7,532,239
Average Spent	\$156.67	\$193.25	\$207.20
Spending Potential Index	65	81	87
Education: Total \$	\$4,962,078	\$17,535,865	\$46,819,930
Average Spent	\$997.20	\$1,204.30	\$1,287.96
Spending Potential Index	73	88	94
Entertainment/Recreation: Total \$	\$11,881,061	\$44,600,754	\$120,539,929
Average Spent	\$2,387.67	\$3,063.03	\$3,315.91
Spending Potential Index	64	82	89
Food at Home: Total \$	\$16,578,238	\$60,877,675	\$161,343,919
Average Spent	\$3,331.64	\$4,180.87	\$4,438.38
Spending Potential Index	68	86	91
Food Away from Home: Total \$	\$11,446,406	\$42,130,222	\$112,297,773
Average Spent	\$2,300.32	\$2,893.36	\$3,089.18
Spending Potential Index	67	84	90
Health Care: Total \$	\$14,394,281	\$54,313,698	\$144,711,249
Average Spent	\$2,892.74	\$3,730.08	\$3,980.83
Spending Potential Index	71	91	97
HH Furnishings & Equipment: Total \$	\$6,652,073	\$25,342,220	\$68,932,713
Average Spent	\$1,336.83	\$1,740.42	\$1,896.26
Spending Potential Index	58	76	82
Investments: Total \$	\$3,225,093	\$13,062,411	\$35,878,867
Average Spent	\$648.13	\$897.08	\$986.98
Spending Potential Index	64	88	97
Retail Goods: Total \$	\$84,677,589	\$317,437,664	\$854,218,663
Average Spent	\$17,017.20	\$21,800.54	\$23,498.53
Spending Potential Index	63	80	87
Shelter: Total \$	\$49,493,693	\$185,411,569	\$496,241,756
Average Spent	\$9,946.48	\$12,733.44	\$13,651.02
Spending Potential Index	64	82	88
TV/Video/Sound Equipment: Total \$	\$4,886,144	\$17,890,362	\$47,346,726
Average Spent	\$981.94	\$1,228.65	\$1,302.45
Spending Potential Index	68	86	91
Travel: Total \$	\$5,875,909	\$22,465,320	\$61,523,519
Average Spent	\$1,180.85	\$1,542.84	\$1,692.44
Spending Potential Index	63	82	90
Vehicle Maintenance & Repairs: Total \$	\$3,165,755	\$11,762,307	\$31,599,814
Average Spent	\$636.20	\$807.80	\$869.27
Spending Potential Index	64	81	88

Data Note: The Spending Potential Index represents the amount spent in the area relative to a national average of 100.

Source: Consumer Spending data are derived from the 2004 and 2005 Consumer Expenditure Surveys, Bureau of Labor Statistics.