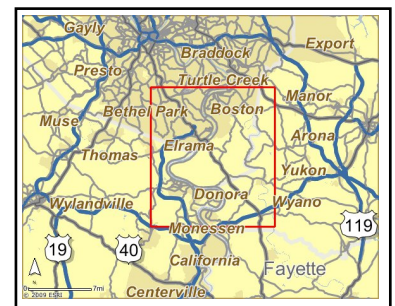
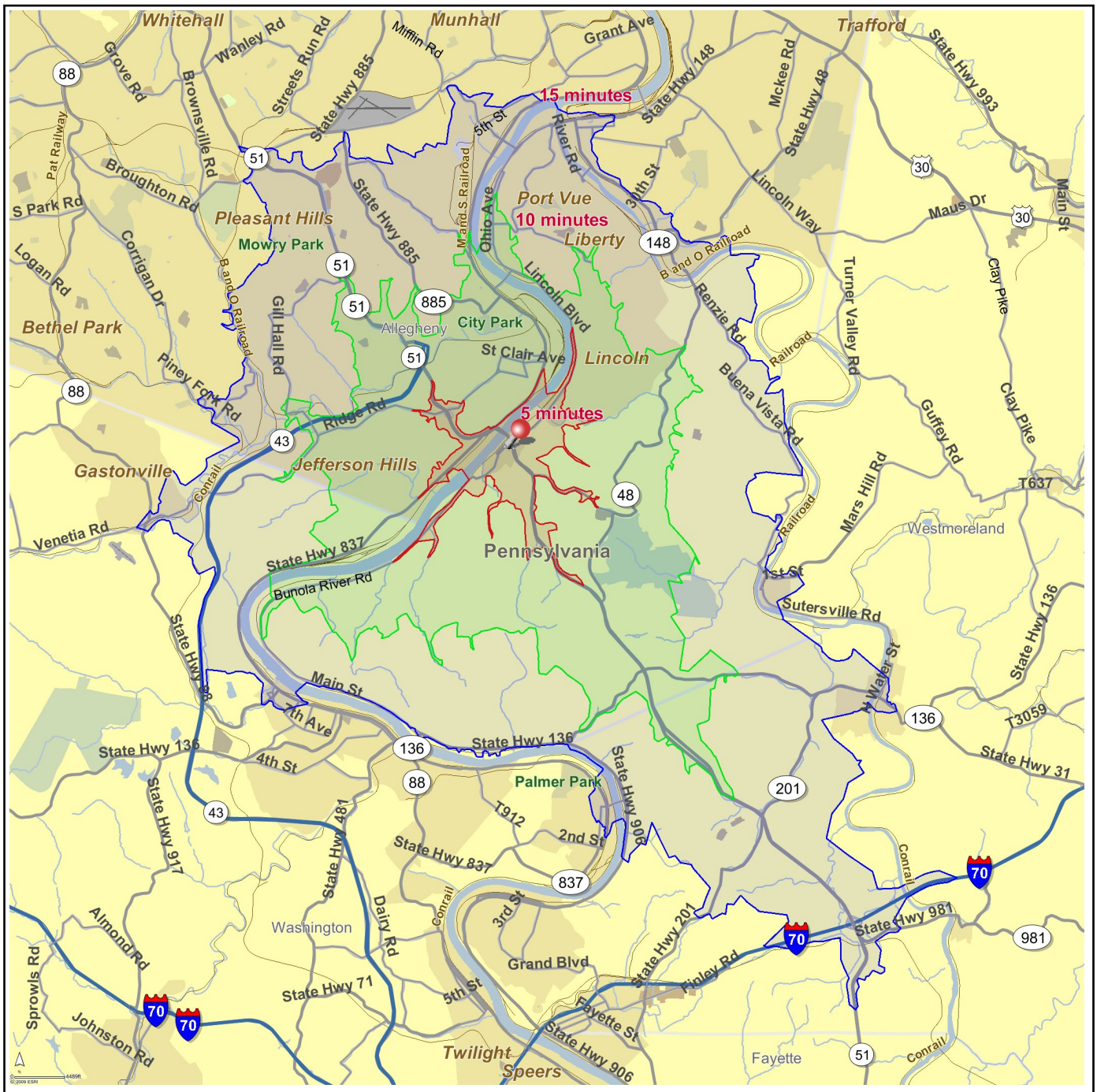


Site Map

Elizabeth
Pennsylvania, United States

Prepared By: STDBOnline.com
April 7, 2009

Latitude 40.2717
Longitude -79.8871





Site Type: Drive Time	Elizabeth Pennsylvania, United States Drive Time: 5 minutes	Elizabeth Pennsylvania, United States Drive Time: 10 minutes	Elizabeth Pennsylvania, United States Drive Time: 15 minutes
------------------------------	--	---	---

2008 Population

Total Population	3,443	23,604	76,938
Male Population	46.4%	47.1%	47.3%
Female Population	53.6%	52.9%	52.7%
Median Age	43.4	44.5	44.9

2008 Income

Median HH Income	\$45,390	\$43,522	\$48,212
Per Capita Income	\$24,817	\$23,343	\$25,237
Average HH Income	\$58,093	\$54,273	\$59,305

2008 Households

Total Households	1,461	10,047	32,385
Average Household Size	2.34	2.32	2.33
1990-2000 Annual Rate	-0.46%	-0.57%	-0.12%

2008 Housing

Owner Occupied Housing Units	62.4%	64.1%	66.5%
Renter Occupied Housing Units	26.4%	22.6%	23.0%
Vacant Housing Units	11.1%	13.4%	10.5%

Population

1990 Population	3,825	27,459	83,923
2000 Population	3,569	24,956	80,136
2008 Population	3,443	23,604	76,938
2013 Population	3,348	22,854	74,984
1990-2000 Annual Rate	-0.69%	-0.95%	-0.46%
2000-2008 Annual Rate	-0.43%	-0.67%	-0.49%
2008-2013 Annual Rate	-0.56%	-0.64%	-0.51%

In the identified market area, the current year population is 76,938. In 2000, the Census count in the market area was 80,136. The rate of change since 2000 was -0.49 percent annually. The five-year projection for the population in the market area is 74,984, representing a change of -0.51 percent annually from 2008 to 2013. Currently, the population is 47.3 percent male and 52.7 percent female.

Households

1990 Households	1,561	11,023	33,429
2000 Households	1,491	10,411	33,040
2008 Households	1,461	10,047	32,385
2013 Households	1,428	9,796	31,787
1990-2000 Annual Rate	-0.46%	-0.57%	-0.12%
2000-2008 Annual Rate	-0.25%	-0.43%	-0.24%
2008-2013 Annual Rate	-0.46%	-0.5%	-0.37%

The household count in this market area has changed from 33,040 in 2000 to 32,385 in the current year, a change of -0.24 percent annually. The five-year projection of households is 31,787, a change of -0.37 percent annually from the current year total. Average household size is currently 2.33, compared to 2.38 in the year 2000. The number of families in the current year is 21,127 in the market area.

Housing

Currently, 66.5 percent of the 36,167 housing units in the market area are owner occupied; 23.0 percent, renter occupied; and 10.5 percent are vacant. In 2000, there were 35,893 housing units— 69.2 percent owner occupied, 22.9 percent renter occupied and 7.9 percent vacant. The rate of change in housing units since 2000 is 0.09 percent. Median home value in the market area is \$106,307, compared to a median home value of \$192,285 for the U.S. In five years, median home value is projected to change by 0.87 percent annually to \$111,008. From 2000 to the current year, median home value changed by 5.43 percent annually.

Source: U.S. Bureau of the Census, 2000 Census of Population and Housing. ESRI forecasts for 2008 and 2013. ESRI converted 1990 Census data into 2000 geography.



Site Type: Drive Time	Elizabeth Pennsylvania, United States Drive Time: 5 minutes	Elizabeth Pennsylvania, United States Drive Time: 10 minutes	Elizabeth Pennsylvania, United States Drive Time: 15 minutes
Median Household Income			
1990 Median HH Income	\$24,792	\$23,062	\$25,227
2000 Median HH Income	\$33,184	\$32,273	\$35,737
2008 Median HH Income	\$45,390	\$43,522	\$48,212
2013 Median HH Income	\$56,866	\$54,568	\$60,550
1990-2000 Annual Rate	2.96%	3.42%	3.54%
2000-2008 Annual Rate	3.87%	3.69%	3.7%
2008-2013 Annual Rate	4.61%	4.63%	4.66%
Per Capita Income			
1990 Per Capita Income	\$11,671	\$11,903	\$12,445
2000 Per Capita Income	\$18,047	\$17,161	\$18,800
2008 Per Capita Income	\$24,817	\$23,343	\$25,237
2013 Per Capita Income	\$28,934	\$27,341	\$29,599
1990-2000 Annual Rate	4.46%	3.73%	4.21%
2000-2008 Annual Rate	3.94%	3.8%	3.63%
2008-2013 Annual Rate	3.12%	3.21%	3.24%
Average Household Income			
1990 Average Household Income	\$28,194	\$29,164	\$30,850
2000 Average Household Income	\$43,952	\$41,032	\$45,069
2008 Average HH Income	\$58,093	\$54,273	\$59,305
2013 Average HH Income	\$67,525	\$63,127	\$69,067
1990-2000 Annual Rate	4.54%	3.47%	3.86%
2000-2008 Annual Rate	3.44%	3.45%	3.38%
2008-2013 Annual Rate	3.05%	3.07%	3.09%

Households by Income

Current median household income is \$48,212 in the market area, compared to \$53,154 for all U.S. households. Median household income is projected to be \$60,550 in five years. In 2000, median household income was \$35,737, compared to \$25,227 in 1990.

Current average household income is \$59,305 in this market area, compared to \$73,126 for all U.S. households. Average household income is projected to be \$69,067 in five years. In 2000, average household income was \$45,069, compared to \$30,850 in 1990.

Current per capita income is \$25,237 in the market area, compared to the U.S. per capita income of \$27,916. The per capita income is projected to be \$29,599 in five years. In 2000, the per capita income was \$18,800, compared to \$12,445 in 1990.

Population by Employment

Total Businesses	141	870	3,406
Total Employees	1,090	11,342	39,064

Currently, 92.0 percent of the civilian labor force in the identified market area is employed and 8.0 percent are unemployed. In comparison, 93.4 percent of the U.S. civilian labor force is employed, and 6.6 percent are unemployed. In five years the rate of employment in the market area will be 92.4 percent of the civilian labor force, and unemployment will be 7.6 percent. The percentage of the U.S. civilian labor force that will be employed in five years is 93.9 percent, and 6.1 percent will be unemployed. In 2000, 58.5 percent of the population aged 16 years or older in the market area participated in the labor force, and 0.0 percent were in the Armed Forces.

In the current year, the occupational distribution of the employed population is:

- 58.3 percent in white collar jobs (compared to 60.2 percent of U.S. employment)
- 17.4 percent in service jobs (compared to 16.5 percent of U.S. employment)
- 24.3 percent in blue collar jobs (compared to 23.3 percent of U.S. employment)

In 2000, 80.0 percent of the market area population drove alone to work, and 1.6 percent worked at home. The average travel time to work in 2000 was 28.7 minutes in the market area, compared to the U.S. average of 25.5 minutes.

Population by Education

In 2008, the educational attainment of the population aged 25 years or older in the market area was distributed as follows:

- 11.9 percent had not earned a high school diploma (16.4 percent in the U.S.)
- 43.1 percent were high school graduates only (29.6 percent in the U.S.)
- 9.3 percent had completed an Associate degree (7.2 percent in the U.S.)
- 12.5 percent had a Bachelor's degree (17.0 percent in the U.S.)
- 6.2 percent had earned a Master's/Professional/Doctorate Degree (9.7 percent in the U.S.)



Demographic and Income Profile - Appraisal Version

Prepared By: STDBOnline.com

Elizabeth Latitude **40.2717**
Pennsylvania, United States Longitude **-79.8871**
 Site Type: Drive Time Drive Time: **5 minutes**

Summary	2000	2008	2013
Population	3,569	3,443	3,348
Households	1,491	1,461	1,428
Families	997	947	906
Average Household Size	2.38	2.34	2.33
Owner Occupied HUs	1,063	1,026	1,018
Renter Occupied HUs	428	434	411
Median Age	41.0	43.4	45.5

Trends: 2008-2013 Annual Rate	Area	State	National
Population	-0.56%	0.32%	1.23%
Households	-0.46%	0.42%	1.26%
Families	-0.88%	0.09%	1.05%
Owner HHs	-0.16%	0.24%	1.07%
Median Household Income	4.61%	3.45%	3.19%

Households by Income	2000		2008		2013	
	Number	Percent	Number	Percent	Number	Percent
< \$15,000	278	18.6%	183	12.5%	144	10.1%
\$15,000 - \$24,999	243	16.3%	177	12.1%	133	9.3%
\$25,000 - \$34,999	270	18.1%	181	12.4%	128	9.0%
\$35,000 - \$49,999	277	18.5%	274	18.7%	225	15.8%
\$50,000 - \$74,999	243	16.3%	282	19.3%	384	26.9%
\$75,000 - \$99,999	99	6.6%	227	15.5%	200	14.0%
\$100,000 - \$149,999	57	3.8%	80	5.5%	144	10.1%
\$150,000 - \$199,000	5	0.3%	31	2.1%	28	2.0%
\$200,000+	22	1.5%	27	1.8%	40	2.8%
Median Household Income	\$33,184		\$45,390		\$56,866	
Average Household Income	\$43,952		\$58,093		\$67,525	
Per Capita Income	\$18,047		\$24,817		\$28,934	

Population by Age	2000		2008		2013	
	Number	Percent	Number	Percent	Number	Percent
0 - 4	188	5.3%	190	5.5%	181	5.4%
5 - 9	252	7.1%	184	5.3%	174	5.2%
10 - 14	227	6.4%	203	5.9%	183	5.5%
15 - 19	205	5.7%	217	6.3%	195	5.8%
20 - 24	145	4.1%	179	5.2%	186	5.6%
25 - 34	432	12.1%	360	10.5%	343	10.2%
35 - 44	555	15.5%	473	13.7%	385	11.5%
45 - 54	484	13.6%	541	15.7%	542	16.2%
55 - 64	381	10.7%	438	12.7%	493	14.7%
65 - 74	324	9.1%	300	8.7%	326	9.7%
75 - 84	289	8.1%	239	6.9%	214	6.4%
85+	89	2.5%	119	3.5%	127	3.8%

Data Note: Income is expressed in current dollars.

Source: U.S. Bureau of the Census, 2000 Census of Population and Housing. ESRI forecasts for 2008 and 2013.



Demographic and Income Profile - Appraisal Version

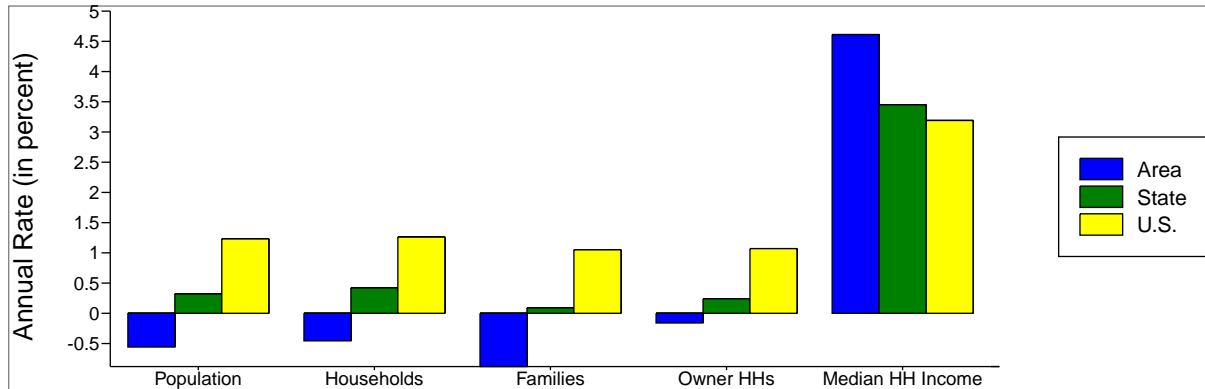
Prepared By: STDBOnline.com

Elizabeth
Pennsylvania, United States

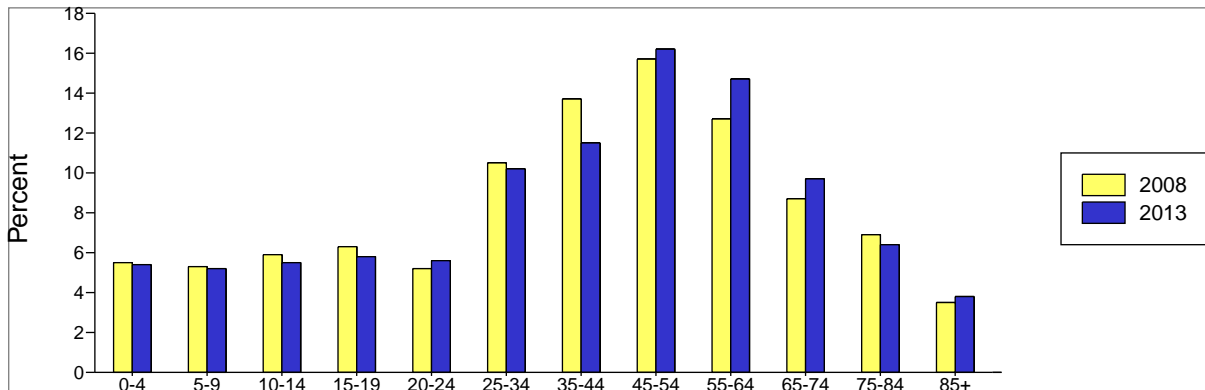
Site Type: Drive Time

Latitude 40.2717
Longitude -79.8871
Drive Time: 5 minutes

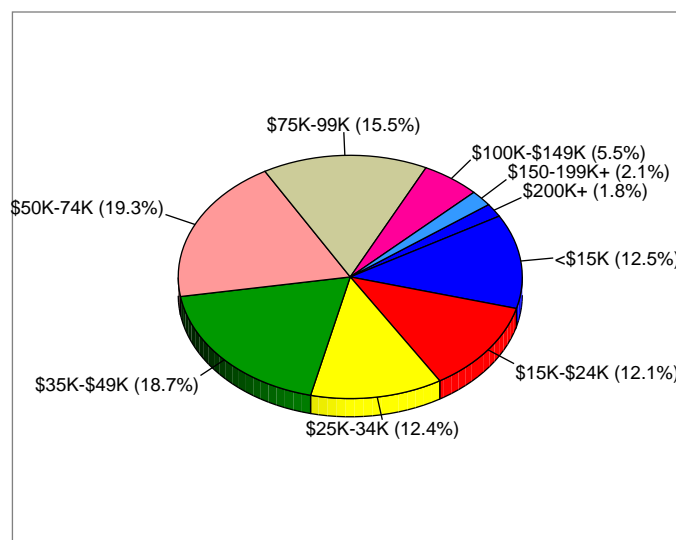
Trends 2008-2013



Population by Age



2008 Household Income



Source: ESRI forecasts for 2008 and 2013.



Demographic and Income Profile - Appraisal Version

Prepared By: STDBOnline.com

Elizabeth Latitude **40.2717**
Pennsylvania, United States Longitude **-79.8871**
 Site Type: **Drive Time** Drive Time: **10 minutes**

Summary	2000	2008	2013
Population	24,956	23,604	22,854
Households	10,411	10,047	9,796
Families	6,889	6,443	6,151
Average Household Size	2.37	2.32	2.30
Owner Occupied HUs	7,782	7,431	7,187
Renter Occupied HUs	2,629	2,616	2,610
Median Age	42.2	44.5	46.2

Trends: 2008-2013 Annual Rate	Area	State	National
Population	-0.64%	0.32%	1.23%
Households	-0.5%	0.42%	1.26%
Families	-0.92%	0.09%	1.05%
Owner HHs	-0.67%	0.24%	1.07%
Median Household Income	4.63%	3.45%	3.19%

Households by Income	2000		2008		2013	
	Number	Percent	Number	Percent	Number	Percent
< \$15,000	2,221	21.5%	1,505	15.0%	1,187	12.1%
\$15,000 - \$24,999	1,758	17.0%	1,379	13.7%	1,052	10.7%
\$25,000 - \$34,999	1,553	15.0%	1,218	12.1%	951	9.7%
\$35,000 - \$49,999	1,867	18.1%	1,547	15.4%	1,386	14.1%
\$50,000 - \$74,999	1,823	17.6%	2,012	20.0%	2,361	24.1%
\$75,000 - \$99,999	650	6.3%	1,588	15.8%	1,505	15.4%
\$100,000 - \$149,999	312	3.0%	506	5.0%	976	10.0%
\$150,000 - \$199,000	63	0.6%	148	1.5%	174	1.8%
\$200,000+	96	0.9%	146	1.5%	206	2.1%
Median Household Income	\$32,273		\$43,522		\$54,568	
Average Household Income	\$41,032		\$54,273		\$63,127	
Per Capita Income	\$17,161		\$23,343		\$27,341	

Population by Age	2000		2008		2013	
	Number	Percent	Number	Percent	Number	Percent
0 - 4	1,288	5.2%	1,232	5.2%	1,174	5.1%
5 - 9	1,625	6.5%	1,245	5.3%	1,158	5.1%
10 - 14	1,631	6.5%	1,379	5.8%	1,245	5.4%
15 - 19	1,411	5.7%	1,461	6.2%	1,324	5.8%
20 - 24	1,087	4.4%	1,224	5.2%	1,246	5.5%
25 - 34	2,783	11.2%	2,427	10.3%	2,303	10.1%
35 - 44	3,765	15.1%	2,995	12.7%	2,594	11.3%
45 - 54	3,521	14.1%	3,798	16.1%	3,512	15.4%
55 - 64	2,508	10.1%	3,056	12.9%	3,584	15.7%
65 - 74	2,607	10.4%	2,076	8.8%	2,153	9.4%
75 - 84	2,083	8.3%	1,861	7.9%	1,636	7.2%
85+	646	2.6%	852	3.6%	926	4.1%

Data Note: Income is expressed in current dollars.

Source: U.S. Bureau of the Census, 2000 Census of Population and Housing. ESRI forecasts for 2008 and 2013.



Demographic and Income Profile - Appraisal Version

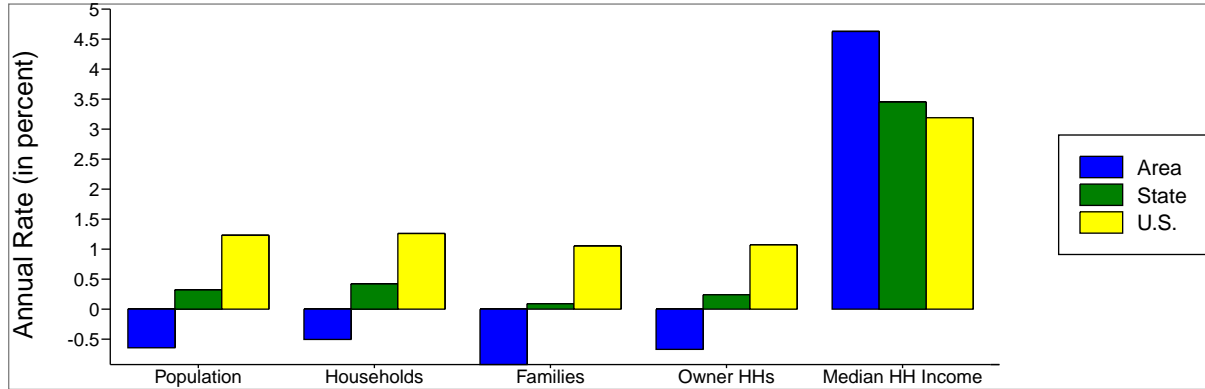
Prepared By: STDBOnline.com

Elizabeth
Pennsylvania, United States

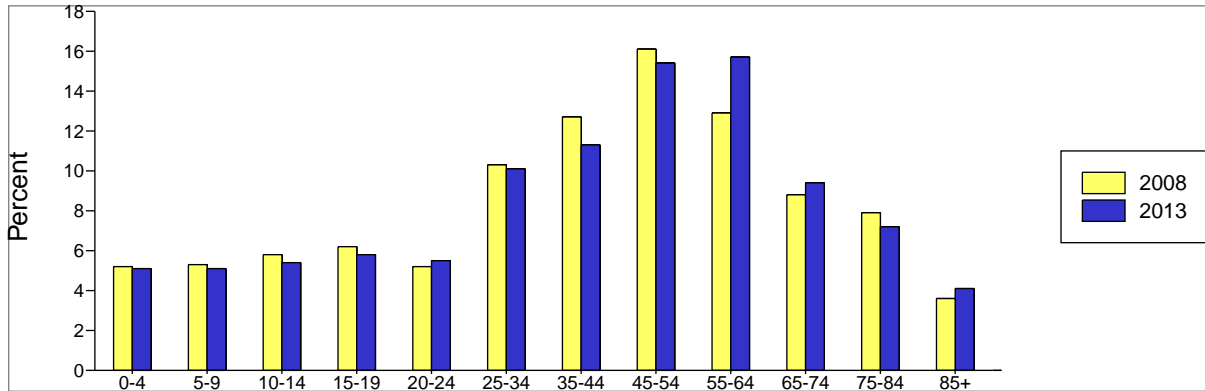
Site Type: Drive Time

Latitude 40.2717
Longitude -79.8871
Drive Time: 10 minutes

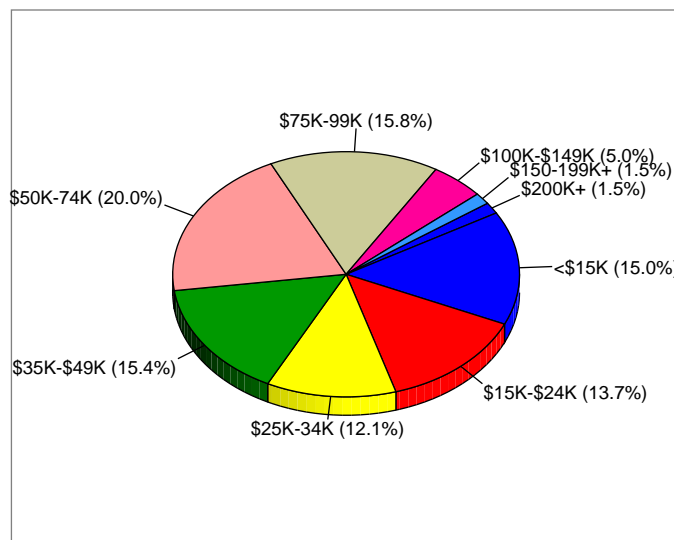
Trends 2008-2013



Population by Age



2008 Household Income



Source: ESRI forecasts for 2008 and 2013.



Demographic and Income Profile - Appraisal Version

Prepared By: STDBOnline.com

Elizabeth
Pennsylvania, United States

Site Type: Drive Time

Latitude 40.2717
Longitude -79.8871
Drive Time: 15 minutes

Summary	2000	2008	2013
Population	80,136	76,938	74,984
Households	33,040	32,385	31,787
Families	22,223	21,127	20,323
Average Household Size	2.38	2.33	2.31
Owner Occupied HUs	24,821	24,068	23,352
Renter Occupied HUs	8,218	8,317	8,435
Median Age	42.2	44.9	46.4

Trends: 2008-2013 Annual Rate	Area	State	National
Population	-0.51%	0.32%	1.23%
Households	-0.37%	0.42%	1.26%
Families	-0.77%	0.09%	1.05%
Owner HHs	-0.6%	0.24%	1.07%
Median Household Income	4.66%	3.45%	3.19%

Households by Income	2000		2008		2013	
	Number	Percent	Number	Percent	Number	Percent
< \$15,000	6,201	18.9%	4,163	12.9%	3,340	10.5%
\$15,000 - \$24,999	5,314	16.2%	3,969	12.3%	2,924	9.2%
\$25,000 - \$34,999	4,557	13.9%	3,786	11.7%	2,975	9.4%
\$35,000 - \$49,999	5,656	17.2%	4,782	14.8%	4,270	13.4%
\$50,000 - \$74,999	6,286	19.1%	6,543	20.2%	7,062	22.2%
\$75,000 - \$99,999	2,706	8.2%	5,658	17.5%	5,491	17.3%
\$100,000 - \$149,999	1,513	4.6%	2,233	6.9%	4,093	12.9%
\$150,000 - \$199,000	335	1.0%	690	2.1%	788	2.5%
\$200,000+	306	0.9%	562	1.7%	843	2.7%
Median Household Income	\$35,737		\$48,212		\$60,550	
Average Household Income	\$45,069		\$59,305		\$69,067	
Per Capita Income	\$18,800		\$25,237		\$29,599	

Population by Age	2000		2008		2013	
	Number	Percent	Number	Percent	Number	Percent
0 - 4	4,136	5.2%	3,965	5.2%	3,799	5.1%
5 - 9	5,072	6.3%	4,013	5.2%	3,759	5.0%
10 - 14	5,295	6.6%	4,424	5.8%	4,094	5.5%
15 - 19	4,736	5.9%	4,621	6.0%	4,235	5.6%
20 - 24	3,459	4.3%	3,935	5.1%	3,851	5.1%
25 - 34	8,800	11.0%	7,813	10.2%	7,585	10.1%
35 - 44	12,338	15.4%	9,830	12.8%	8,650	11.5%
45 - 54	11,867	14.8%	12,553	16.3%	11,674	15.6%
55 - 64	7,891	9.8%	10,190	13.2%	11,798	15.7%
65 - 74	8,108	10.1%	6,676	8.7%	7,084	9.4%
75 - 84	6,381	8.0%	6,132	8.0%	5,370	7.2%
85+	2,050	2.6%	2,785	3.6%	3,085	4.1%

Data Note: Income is expressed in current dollars.

Source: U.S. Bureau of the Census, 2000 Census of Population and Housing. ESRI forecasts for 2008 and 2013.



Demographic and Income Profile - Appraisal Version

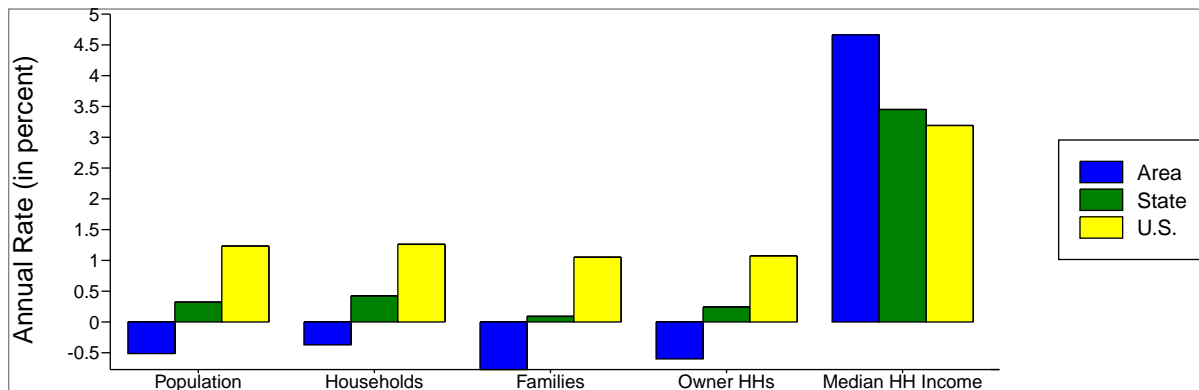
Prepared By: STDBOnline.com

Elizabeth
Pennsylvania, United States

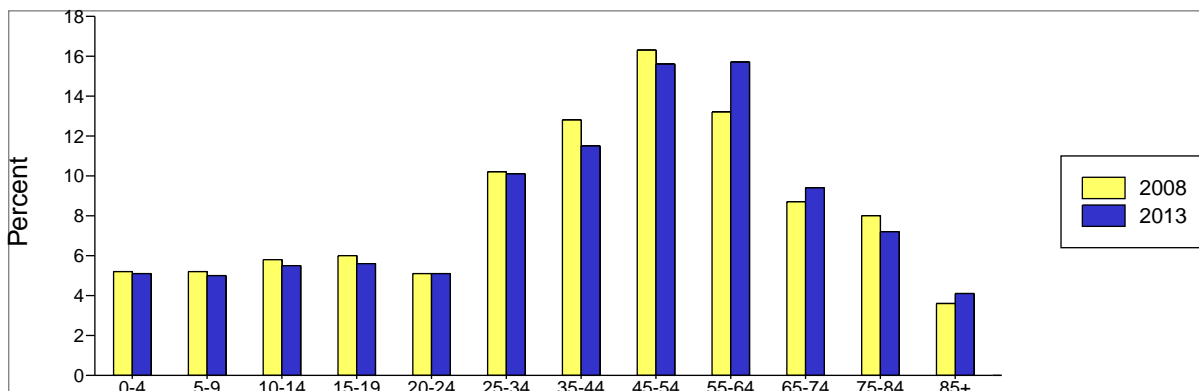
Site Type: Drive Time

Latitude 40.2717
Longitude -79.8871
Drive Time: 15 minutes

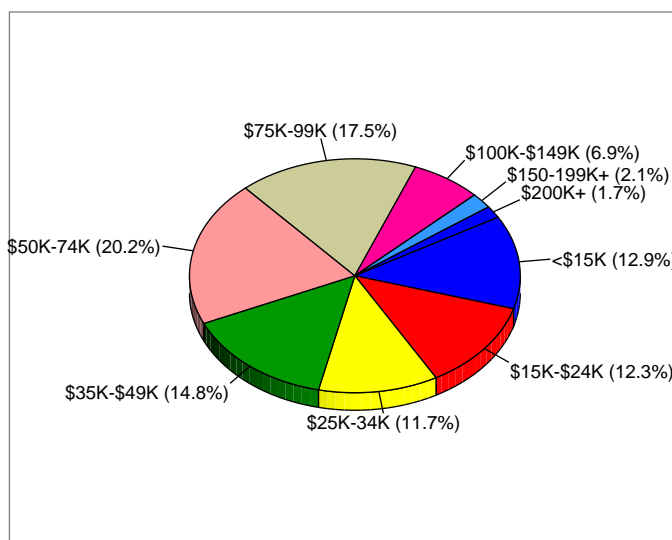
Trends 2008-2013



Population by Age



2008 Household Income



Source: ESRI forecasts for 2008 and 2013.



Latitude 40.2717
Longitude -79.8871

Elizabeth Pennsylvania, United S	Elizabeth Pennsylvania, United S	Elizabeth Pennsylvania, United S
Drive Time: 5 minutes	Drive Time: 10 minutes	Drive Time: 15 minutes



1990 Total Population	3,825	27,459	83,923
2000 Total Population	3,569	24,956	80,136
2000 Group Quarters	21	281	1,626
2000 Population Density	845.9	667.7	781.0
2008 Total Population	3,443	23,604	76,938
2008 Population Density	816.2	631.5	749.8
2013 Total Population	3,348	22,854	74,984
2008 - 2013 Annual Rate	-0.56%	-0.64%	-0.51%



1990 Households	1,561	11,023	33,429
2000 Households	1,491	10,411	33,040
2000 Average Household Size	2.38	2.37	2.38
2008 Households	1,461	10,047	32,385
2008 Average Household Size	2.34	2.32	2.33
2013 Households	1,428	9,796	31,787
2013 Average Household Size	2.33	2.3	2.31
2008 - 2013 Annual Rate	-0.46%	-0.5%	-0.37%
2000 Families	997	6,889	22,223
2000 Average Family Size	2.93	2.94	2.94
2008 Families	947	6,443	21,127
2008 Average Family Size	2.92	2.91	2.91
2013 Families	906	6,151	20,323
2013 Average Family Size	2.92	2.91	2.9
2008 - 2013 Annual Rate	-0.88%	-0.92%	-0.77%



2000 Housing Units	1,626	11,582	35,893
Owner Occupied Housing Units	65.5%	67.3%	69.2%
Renter Occupied Housing Units	26.4%	22.8%	22.9%
Vacant Housing Units	8.2%	9.9%	7.9%
2008 Housing Units	1,644	11,597	36,167
Owner Occupied Housing Units	62.4%	64.1%	66.5%
Renter Occupied Housing Units	26.4%	22.6%	23.0%
Vacant Housing Units	11.1%	13.4%	10.5%
2013 Housing Units	1,646	11,636	36,253
Owner Occupied Housing Units	61.8%	61.8%	64.4%
Renter Occupied Housing Units	25.0%	22.4%	23.3%
Vacant Housing Units	13.2%	15.8%	12.3%

Median Household Income

1990	\$24,792	\$23,062	\$25,227
2000	\$33,184	\$32,273	\$35,737
2008	\$45,390	\$43,522	\$48,212
2013	\$56,866	\$54,568	\$60,550

Median Home Value

1990	\$43,675	\$39,039	\$46,806
2000	\$66,750	\$57,113	\$68,734
2008	\$102,679	\$86,265	\$106,307
2013	\$106,285	\$89,876	\$111,008

Per Capita Income

1990	\$11,671	\$11,903	\$12,445
2000	\$18,047	\$17,161	\$18,800
2008	\$24,817	\$23,343	\$25,237
2013	\$28,934	\$27,341	\$29,599

Median Age

1990	39.6	39.2	38.8
2000	41.0	42.2	42.2
2008	43.4	44.5	44.9
2013	45.5	46.2	46.4

Data Note: Household population includes persons not residing in group quarters. Average Household Size is the household population divided by total households. Persons in families include the householder and persons related to the householder by birth, marriage, or adoption. Per Capita Income represents the income received by all persons aged 15 years and over divided by total population. Detail may not sum to totals due to rounding.

Source: U.S. Bureau of the Census, 2000 Census of Population and Housing. ESRI forecasts for 2008 and 2013. ESRI converted 1990 Census data into 2000 geography.



Latitude	40.2717	Elizabeth Pennsylvania, United S	Elizabeth Pennsylvania, United S	Elizabeth Pennsylvania, United S
Longitude	-79.8871	Drive Time: 5 minutes	Drive Time: 10 minutes	Drive Time: 15 minutes



2000 Households by Income

Household Income Base	1,494	10,343	32,874
< \$15,000	18.6%	21.5%	18.9%
\$15,000 - \$24,999	16.3%	17.0%	16.2%
\$25,000 - \$34,999	18.1%	15.0%	13.9%
\$35,000 - \$49,999	18.5%	18.1%	17.2%
\$50,000 - \$74,999	16.3%	17.6%	19.1%
\$75,000 - \$99,999	6.6%	6.3%	8.2%
\$100,000 - \$149,999	3.8%	3.0%	4.6%
\$150,000 - \$199,999	0.3%	0.6%	1.0%
\$200,000+	1.5%	0.9%	0.9%
Average Household Income	\$43,952	\$41,032	\$45,069

2008 Households by Income

Household Income Base	1,462	10,049	32,386
< \$15,000	12.5%	15.0%	12.9%
\$15,000 - \$24,999	12.1%	13.7%	12.3%
\$25,000 - \$34,999	12.4%	12.1%	11.7%
\$35,000 - \$49,999	18.7%	15.4%	14.8%
\$50,000 - \$74,999	19.3%	20.0%	20.2%
\$75,000 - \$99,999	15.5%	15.8%	17.5%
\$100,000 - \$149,999	5.5%	5.0%	6.9%
\$150,000 - \$199,999	2.1%	1.5%	2.1%
\$200,000+	1.8%	1.5%	1.7%
Average Household Income	\$58,093	\$54,273	\$59,305

2013 Households by Income

Household Income Base	1,426	9,798	31,786
< \$15,000	10.1%	12.1%	10.5%
\$15,000 - \$24,999	9.3%	10.7%	9.2%
\$25,000 - \$34,999	9.0%	9.7%	9.4%
\$35,000 - \$49,999	15.8%	14.1%	13.4%
\$50,000 - \$74,999	26.9%	24.1%	22.2%
\$75,000 - \$99,999	14.0%	15.4%	17.3%
\$100,000 - \$149,999	10.1%	10.0%	12.9%
\$150,000 - \$199,999	2.0%	1.8%	2.5%
\$200,000+	2.8%	2.1%	2.7%
Average Household Income	\$67,525	\$63,127	\$69,067

2000 Owner Occupied HUs by Value

Total	1,062	7,764	24,830
<\$50,000	31.2%	43.5%	31.3%
\$50,000 - 99,999	53.7%	40.3%	43.2%
\$100,000 - 149,999	11.3%	11.0%	15.9%
\$150,000 - 199,999	1.8%	2.3%	5.1%
\$200,000 - \$299,999	0.8%	1.8%	3.4%
\$300,000 - 499,999	0.3%	0.6%	0.8%
\$500,000 - 999,999	0.9%	0.4%	0.2%
\$1,000,000+	0.0%	0.0%	0.0%
Average Home Value	\$74,939	\$69,672	\$82,481

2000 Specified Renter Occupied HUs by Contract Rent

Total	449	2,624	8,085
With Cash Rent	94.0%	91.0%	92.7%
No Cash Rent	6.0%	9.0%	7.3%
Median Rent	\$350	\$329	\$351
Average Rent	\$346	\$323	\$363

Data Note: Income represents the preceding year, expressed in current dollars. Household income includes wage and salary earnings, interest, dividends, net rents, pensions, SSI and welfare payments, child support and alimony. Specified Renter Occupied HUs exclude houses on 10+ acres. Average Rent excludes units paying no cash rent.

Source: U.S. Bureau of the Census, 2000 Census of Population and Housing. ESRI forecasts for 2008 and 2013.



Latitude 40.2717
Longitude -79.8871

Elizabeth
Pennsylvania, United S
Drive Time: 5 minutes

Elizabeth
Pennsylvania, United S
Drive Time: 10 minutes

Elizabeth
Pennsylvania, United S
Drive Time: 15 minutes



2000 Population by Age

	Elizabeth	Elizabeth	Elizabeth
	Pennsylvania, United S	Pennsylvania, United S	Pennsylvania, United S
	Drive Time: 5 minutes	Drive Time: 10 minutes	Drive Time: 15 minutes
Total	3,571	24,955	80,133
0 - 4	5.3%	5.2%	5.2%
5 - 9	7.1%	6.5%	6.3%
10 - 14	6.4%	6.5%	6.6%
15 - 19	5.7%	5.7%	5.9%
20 - 24	4.1%	4.4%	4.3%
25 - 34	12.1%	11.2%	11.0%
35 - 44	15.5%	15.1%	15.4%
45 - 54	13.6%	14.1%	14.8%
55 - 64	10.7%	10.1%	9.8%
65 - 74	9.1%	10.4%	10.1%
75 - 84	8.1%	8.3%	8.0%
85+	2.5%	2.6%	2.6%
18+	77.7%	78.2%	78.1%

2008 Population by Age

Total	3,443	23,606	76,937
0 - 4	5.5%	5.2%	5.2%
5 - 9	5.3%	5.3%	5.2%
10 - 14	5.9%	5.8%	5.8%
15 - 19	6.3%	6.2%	6.0%
20 - 24	5.2%	5.2%	5.1%
25 - 34	10.5%	10.3%	10.2%
35 - 44	13.7%	12.7%	12.8%
45 - 54	15.7%	16.1%	16.3%
55 - 64	12.7%	12.9%	13.2%
65 - 74	8.7%	8.8%	8.7%
75 - 84	6.9%	7.9%	8.0%
85+	3.5%	3.6%	3.6%
18+	79.3%	79.8%	80.1%

2013 Population by Age

Total	3,349	22,855	74,984
0 - 4	5.4%	5.1%	5.1%
5 - 9	5.2%	5.1%	5.0%
10 - 14	5.5%	5.4%	5.5%
15 - 19	5.8%	5.8%	5.6%
20 - 24	5.6%	5.5%	5.1%
25 - 34	10.2%	10.1%	10.1%
35 - 44	11.5%	11.3%	11.5%
45 - 54	16.2%	15.4%	15.6%
55 - 64	14.7%	15.7%	15.7%
65 - 74	9.7%	9.4%	9.4%
75 - 84	6.4%	7.2%	7.2%
85+	3.8%	4.1%	4.1%
18+	80.3%	80.7%	80.9%

2000 Population by Sex

Males	46.3%	47.0%	47.3%
Females	53.7%	53.0%	52.7%

2008 Population by Sex

Males	46.4%	47.1%	47.3%
Females	53.6%	52.9%	52.7%

2013 Population by Sex

Males	46.3%	47.2%	47.3%
Females	53.7%	52.8%	52.7%

Source: U.S. Bureau of the Census, 2000 Census of Population and Housing. ESRI forecasts for 2008 and 2013.



Latitude 40.2717
Longitude -79.8871

Elizabeth
Pennsylvania, United S
Drive Time: 5 minutes

Elizabeth
Pennsylvania, United S
Drive Time: 10 minutes

Elizabeth
Pennsylvania, United S
Drive Time: 15 minutes



2008 Population 15+ by Marital Status

	Elizabeth Pennsylvania, United S	Elizabeth Pennsylvania, United S	Elizabeth Pennsylvania, United S
Total	2,865	19,750	64,535
Never Married	25.3%	26.3%	25.1%
Married	53.8%	53.2%	56.3%
Widowed	9.5%	10.3%	9.5%
Divorced	11.4%	10.3%	9.1%



2000 Population 16+ by Employment Status

	Elizabeth Pennsylvania, United S	Elizabeth Pennsylvania, United S	Elizabeth Pennsylvania, United S
Total	2,906	20,095	64,362
In Labor Force	61.4%	56.6%	58.5%
Civilian Employed	57.6%	53.3%	54.6%
Civilian Unemployed	3.9%	3.4%	3.9%
In Armed Forces	0.0%	0.0%	0.0%
Not in Labor Force	38.6%	43.4%	41.5%

2008 Civilian Population 16+ in Labor Force

	Elizabeth Pennsylvania, United S	Elizabeth Pennsylvania, United S	Elizabeth Pennsylvania, United S
Civilian Employed	91.7%	92.3%	92.0%
Civilian Unemployed	8.3%	7.7%	8.0%

2013 Civilian Population 16+ in Labor Force

	Elizabeth Pennsylvania, United S	Elizabeth Pennsylvania, United S	Elizabeth Pennsylvania, United S
Civilian Employed	92.1%	92.6%	92.4%
Civilian Unemployed	7.9%	7.4%	7.6%

2000 Females 16+ by Employment Status and Age of Children

	Elizabeth Pennsylvania, United S	Elizabeth Pennsylvania, United S	Elizabeth Pennsylvania, United S
Total	1,579	10,812	34,571
Own Children < 6 Only	5.6%	5.4%	5.7%
Employed/in Armed Forces	3.0%	3.6%	3.6%
Unemployed	0.7%	0.2%	0.3%
Not in Labor Force	1.9%	1.5%	1.8%
Own Children < 6 and 6-17 Only	4.9%	4.4%	4.9%
Employed/in Armed Forces	2.5%	2.9%	2.9%
Unemployed	0.1%	0.1%	0.1%
Not in Labor Force	2.3%	1.5%	1.8%
Own Children 6-17 Only	16.3%	15.3%	15.7%
Employed/in Armed Forces	12.9%	11.3%	11.2%
Unemployed	0.1%	0.3%	0.5%
Not in Labor Force	3.3%	3.8%	4.0%
No Own Children < 18	73.3%	74.9%	73.7%
Employed/in Armed Forces	35.2%	29.6%	29.8%
Unemployed	1.7%	2.0%	2.6%
Not in Labor Force	36.4%	43.3%	41.2%

Source: U.S. Bureau of the Census, 2000 Census of Population and Housing. ESRI forecasts for 2008 and 2013.



Latitude 40.2717
Longitude -79.8871

Elizabeth
Pennsylvania, United S
Drive Time: 5 minutes

Elizabeth
Pennsylvania, United S
Drive Time: 10 minutes

Elizabeth
Pennsylvania, United S
Drive Time: 15 minutes



2008 Employed Population 16+ by Industry

	Elizabeth	Elizabeth	Elizabeth
Total	1,684	10,769	36,172
Agriculture/Mining	0.3%	0.4%	0.8%
Construction	11.9%	9.4%	9.1%
Manufacturing	9.3%	9.5%	8.6%
Wholesale Trade	3.0%	2.7%	3.0%
Retail Trade	13.7%	13.6%	13.9%
Transportation/Utilities	7.8%	7.0%	6.8%
Information	1.6%	2.0%	2.1%
Finance/Insurance/Real Estate	6.7%	5.6%	6.5%
Services	42.0%	45.6%	45.8%
Public Administration	3.8%	4.0%	3.3%

2008 Employed Population 16+ by Occupation

	Elizabeth	Elizabeth	Elizabeth
Total	1,686	10,767	36,168
White Collar	52.4%	51.9%	58.3%
Management/Business/Financial	10.2%	9.9%	11.1%
Professional	15.3%	16.6%	20.0%
Sales	11.4%	10.0%	11.4%
Administrative Support	15.5%	15.4%	15.7%
Services	19.2%	21.2%	17.4%
Blue Collar	28.4%	26.9%	24.3%
Farming/Forestry/Fishing	0.0%	0.0%	0.1%
Construction/Extraction	9.8%	8.0%	7.4%
Installation/Maintenance/Repair	4.4%	3.8%	4.1%
Production	5.5%	6.3%	5.4%
Transportation/Material Moving	8.7%	8.8%	7.3%



2000 Workers 16+ by Means of Transportation to Work

	Elizabeth	Elizabeth	Elizabeth
Total	1,656	10,515	34,634
Drove Alone - Car, Truck, or Van	80.1%	76.4%	80.0%
Carpooled - Car, Truck, or Van	10.0%	12.8%	11.1%
Public Transportation	3.0%	5.2%	4.2%
Walked	4.8%	3.0%	2.5%
Other Means	0.4%	0.7%	0.6%
Worked at Home	1.9%	1.9%	1.6%

2000 Workers 16+ by Travel Time to Work

	Elizabeth	Elizabeth	Elizabeth
Total	1,655	10,514	34,632
Did Not Work at Home	98.1%	98.1%	98.4%
Less than 5 minutes	5.7%	4.8%	3.5%
5 to 9 minutes	12.2%	9.5%	9.7%
10 to 19 minutes	27.2%	27.5%	26.6%
20 to 24 minutes	13.5%	14.5%	13.5%
25 to 34 minutes	11.8%	15.1%	15.1%
35 to 44 minutes	7.6%	7.1%	7.2%
45 to 59 minutes	10.8%	9.6%	11.4%
60 to 89 minutes	7.9%	8.2%	8.5%
90 or more minutes	1.4%	1.8%	2.8%
Worked at Home	1.9%	1.9%	1.6%
Average Travel Time to Work (in min)	25.5	26.5	28.7

2000 Households by Vehicles Available

	Elizabeth	Elizabeth	Elizabeth
Total	1,510	10,402	32,994
None	13.0%	15.1%	13.0%
1	41.0%	40.3%	37.5%
2	33.1%	32.2%	36.5%
3	10.1%	9.3%	9.4%
4	1.7%	2.3%	2.7%
5+	1.2%	0.9%	0.9%
Average Number of Vehicles Available	1.5	1.5	1.5

Source: U.S. Bureau of the Census, 2000 Census of Population and Housing. ESRI forecasts for 2008.



Latitude 40.2717
Longitude -79.8871

Elizabeth
Pennsylvania, United S
Drive Time: 5 minutes

Elizabeth
Pennsylvania, United S
Drive Time: 10 minutes

Elizabeth
Pennsylvania, United S
Drive Time: 15 minutes



2000 Households by Type

	Elizabeth	Elizabeth	Elizabeth
Total	1,491	10,411	33,039
Family Households	66.9%	66.2%	67.3%
Married-couple Family	50.1%	47.3%	51.3%
With Related Children	20.3%	18.2%	20.4%
Other Family (No Spouse)	16.8%	18.8%	16.0%
With Related Children	9.2%	10.2%	8.8%
Nonfamily Households	33.1%	33.8%	32.7%
Householder Living Alone	29.3%	30.1%	29.1%
Householder Not Living Alone	3.8%	3.8%	3.6%
Households with Related Children	29.5%	28.4%	29.2%
Households with Persons 65+	34.4%	36.4%	34.4%

2000 Households by Size

	Elizabeth	Elizabeth	Elizabeth
Total	1,491	10,411	33,040
1 Person Household	29.3%	30.1%	29.1%
2 Person Household	33.3%	33.3%	34.0%
3 Person Household	17.4%	17.1%	16.7%
4 Person Household	12.7%	12.4%	13.0%
5 Person Household	5.3%	5.2%	5.2%
6 Person Household	1.6%	1.5%	1.4%
7+ Person Household	0.3%	0.6%	0.5%

2000 Households by Year Householder Moved In

	Elizabeth	Elizabeth	Elizabeth
Total	1,511	10,402	32,993
Moved in 1999 to March 2000	11.1%	9.6%	9.9%
Moved in 1995 to 1998	19.9%	18.4%	20.2%
Moved in 1990 to 1994	16.2%	13.6%	13.8%
Moved in 1980 to 1989	16.4%	15.1%	16.3%
Moved in 1970 to 1979	11.4%	14.4%	14.3%
Moved in 1969 or Earlier	25.0%	28.8%	25.5%
Median Year Householder Moved In	1988	1984	1986



2000 Housing Units by Units in Structure

	Elizabeth	Elizabeth	Elizabeth
Total	1,640	11,545	35,854
1, Detached	72.7%	70.8%	72.7%
1, Attached	5.6%	10.8%	6.0%
2	7.7%	4.5%	3.6%
3 or 4	6.6%	4.5%	2.8%
5 to 9	1.0%	3.5%	4.1%
10 to 19	0.1%	2.1%	2.7%
20+	2.3%	1.1%	4.5%
Mobile Home	4.0%	2.7%	3.6%
Other	0.0%	0.1%	0.1%

2000 Housing Units by Year Structure Built

	Elizabeth	Elizabeth	Elizabeth
Total	1,643	11,573	35,892
1999 to March 2000	0.0%	0.3%	0.6%
1995 to 1998	1.8%	1.3%	2.2%
1990 to 1994	1.6%	1.9%	2.7%
1980 to 1989	3.8%	3.4%	6.5%
1970 to 1979	10.0%	7.4%	11.4%
1969 or Earlier	82.8%	85.8%	76.6%
Median Year Structure Built	1944	1946	1953

Source: U.S. Bureau of the Census, 2000 Census of Population and Housing.



Latitude 40.2717
 Longitude -79.8871

Elizabeth
 Pennsylvania, United S
 Drive Time: 5 minutes

Elizabeth
 Pennsylvania, United S
 Drive Time: 10 minutes

Elizabeth
 Pennsylvania, United S
 Drive Time: 15 minutes



2000 Population 3+ by School Enrollment

	Elizabeth	Elizabeth	Elizabeth
Total	3,494	24,263	77,532
Enrolled in Nursery/Preschool	1.6%	1.7%	1.7%
Enrolled in Kindergarten	0.6%	0.9%	1.1%
Enrolled in Grade 1-8	12.0%	11.5%	11.0%
Enrolled in Grade 9-12	5.8%	5.6%	5.7%
Enrolled in College	3.3%	3.1%	3.3%
Enrolled in Grad/Prof School	0.3%	0.5%	0.7%
Not Enrolled in School	76.4%	76.7%	76.6%

2008 Population 25+ by Educational Attainment

	Elizabeth	Elizabeth	Elizabeth
Total	2,470	17,063	55,979
Less than 9th Grade	3.4%	3.6%	3.4%
9th - 12th Grade, No Diploma	8.7%	9.3%	8.4%
High School Graduate	48.3%	47.1%	43.1%
Some College, No Degree	17.3%	17.5%	17.1%
Associate Degree	8.1%	9.1%	9.3%
Bachelor's Degree	10.4%	9.1%	12.5%
Graduate/Professional Degree	3.8%	4.3%	6.2%

Source: U.S. Bureau of the Census, 2000 Census of Population and Housing. ESRI forecasts for 2008.



Latitude 40.2717
Longitude -79.8871


Elizabeth
Pennsylvania, United S
Drive Time: 5 minutes

Elizabeth
Pennsylvania, United S
Drive Time: 10 minutes

Elizabeth
Pennsylvania, United S
Drive Time: 15 minutes

Top 3 Tapestry Segments

1.	Heartland Communities	Rustbelt Retirees	Rustbelt Retirees
2.	Rustbelt Retirees	Heartland Communities	Heartland Communities
3.	Home Town	Modest Income Homes	Prosperous Empty Nests

 **2008 Consumer Spending** shows the amount spent on a variety of goods and services by households that reside in the market area. Expenditures are shown by broad budget categories that are not mutually exclusive. Consumer spending does not equal business revenue.

Apparel & Services: Total \$	\$2,538,516	\$16,578,387	\$58,039,154
Average Spent	\$1,737.52	\$1,650.08	\$1,792.16
Spending Potential Index	65	61	67
Computers & Accessories: Total \$	\$263,183	\$1,686,185	\$5,968,732
Average Spent	\$180.14	\$167.83	\$184.31
Spending Potential Index	75	70	77
Education: Total \$	\$1,563,323	\$10,186,449	\$36,162,589
Average Spent	\$1,070.04	\$1,013.88	\$1,116.65
Spending Potential Index	78	74	81
Entertainment/Recreation: Total \$	\$4,381,276	\$27,744,421	\$97,925,939
Average Spent	\$2,998.82	\$2,761.46	\$3,023.81
Spending Potential Index	81	74	81
Food at Home: Total \$	\$5,905,549	\$37,542,576	\$130,584,175
Average Spent	\$4,042.13	\$3,736.70	\$4,032.24
Spending Potential Index	83	76	83
Food Away from Home: Total \$	\$4,015,941	\$25,794,493	\$90,166,881
Average Spent	\$2,748.76	\$2,567.38	\$2,784.22
Spending Potential Index	80	75	81
Health Care: Total \$	\$5,596,063	\$34,699,543	\$119,901,338
Average Spent	\$3,830.30	\$3,453.72	\$3,702.37
Spending Potential Index	94	84	90
HH Furnishings & Equipment: Total \$	\$2,362,693	\$15,437,257	\$55,014,746
Average Spent	\$1,617.18	\$1,536.50	\$1,698.77
Spending Potential Index	70	67	74
Investments: Total \$	\$1,088,996	\$7,727,441	\$27,715,716
Average Spent	\$745.38	\$769.13	\$855.82
Spending Potential Index	73	76	84
Retail Goods: Total \$	\$31,257,731	\$197,645,083	\$695,886,337
Average Spent	\$21,394.75	\$19,672.05	\$21,487.92
Spending Potential Index	79	72	79
Shelter: Total \$	\$16,446,352	\$109,558,204	\$389,160,894
Average Spent	\$11,256.91	\$10,904.57	\$12,016.70
Spending Potential Index	72	70	77
TV/Video/Sound Equipment: Total \$	\$1,719,792	\$11,002,172	\$38,111,284
Average Spent	\$1,177.13	\$1,095.07	\$1,176.82
Spending Potential Index	82	76	82
Travel: Total \$	\$2,089,153	\$13,529,635	\$48,833,366
Average Spent	\$1,429.95	\$1,346.63	\$1,507.90
Spending Potential Index	76	71	80
Vehicle Maintenance & Repairs: Total \$	\$1,139,398	\$7,233,778	\$25,582,606
Average Spent	\$779.88	\$719.99	\$789.95
Spending Potential Index	79	73	80

Data Note: The Spending Potential Index represents the amount spent in the area relative to a national average of 100.

Source: Consumer Spending data are derived from the 2004 and 2005 Consumer Expenditure Surveys, Bureau of Labor Statistics.