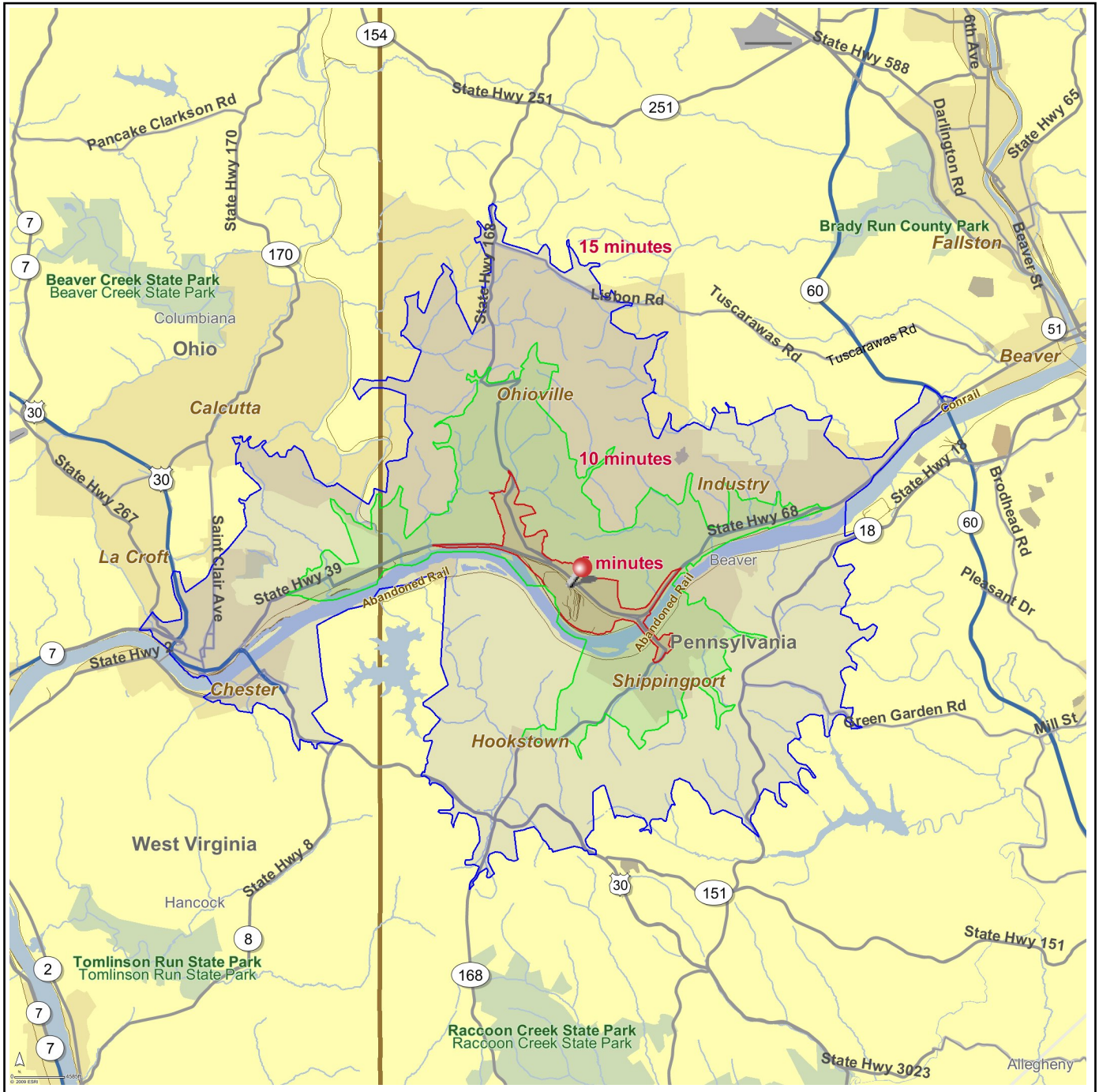


Site Map

Midland (Beaver County)
Pennsylvania, United States

Prepared By: STDBOnline.com
April 7, 2009

Latitude 40.6377
Longitude -80.4571





Site Type: Drive Time

Midland (Beaver County)
Pennsylvania, United States
Drive Time: 5 minutes

Midland (Beaver County)
Pennsylvania, United States
Drive Time: 10 minutes

Midland (Beaver County)
Pennsylvania, United States
Drive Time: 15 minutes

2008 Population

	Midland (Beaver County) Pennsylvania, United States	Midland (Beaver County) Pennsylvania, United States	Midland (Beaver County) Pennsylvania, United States
Total Population	2,752	7,110	25,917
Male Population	45.8%	47.5%	47.6%
Female Population	54.2%	52.5%	52.4%
Median Age	40.8	41.3	40.4

2008 Income

	Midland (Beaver County) Pennsylvania, United States	Midland (Beaver County) Pennsylvania, United States	Midland (Beaver County) Pennsylvania, United States
Median HH Income	\$28,964	\$37,191	\$36,888
Per Capita Income	\$19,532	\$20,568	\$19,737
Average HH Income	\$42,213	\$48,503	\$47,882

2008 Households

	Midland (Beaver County) Pennsylvania, United States	Midland (Beaver County) Pennsylvania, United States	Midland (Beaver County) Pennsylvania, United States
Total Households	1,274	2,995	10,477
Average Household Size	2.14	2.35	2.44
1990-2000 Annual Rate	-0.24%	-0.19%	-0.14%

2008 Housing

	Midland (Beaver County) Pennsylvania, United States	Midland (Beaver County) Pennsylvania, United States	Midland (Beaver County) Pennsylvania, United States
Owner Occupied Housing Units	39.8%	58.8%	61.1%
Renter Occupied Housing Units	41.2%	28.8%	27.5%
Vacant Housing Units	19.1%	12.5%	11.4%

Population

	Midland (Beaver County) Pennsylvania, United States	Midland (Beaver County) Pennsylvania, United States	Midland (Beaver County) Pennsylvania, United States
1990 Population	3,164	8,006	28,747
2000 Population	3,019	7,549	27,325
2008 Population	2,752	7,110	25,917
2013 Population	2,637	6,925	25,355
1990-2000 Annual Rate	-0.47%	-0.59%	-0.51%
2000-2008 Annual Rate	-1.12%	-0.72%	-0.64%
2008-2013 Annual Rate	-0.85%	-0.53%	-0.44%

In the identified market area, the current year population is 25,917. In 2000, the Census count in the market area was 27,325. The rate of change since 2000 was -0.64 percent annually. The five-year projection for the population in the market area is 25,355, representing a change of -0.44 percent annually from 2008 to 2013. Currently, the population is 47.6 percent male and 52.4 percent female.

Households

	Midland (Beaver County) Pennsylvania, United States	Midland (Beaver County) Pennsylvania, United States	Midland (Beaver County) Pennsylvania, United States
1990 Households	1,403	3,180	11,023
2000 Households	1,370	3,121	10,866
2008 Households	1,274	2,995	10,477
2013 Households	1,228	2,935	10,310
1990-2000 Annual Rate	-0.24%	-0.19%	-0.14%
2000-2008 Annual Rate	-0.88%	-0.5%	-0.44%
2008-2013 Annual Rate	-0.73%	-0.4%	-0.32%

The household count in this market area has changed from 10,866 in 2000 to 10,477 in the current year, a change of -0.44 percent annually. The five-year projection of households is 10,310, a change of -0.32 percent annually from the current year total. Average household size is currently 2.44, compared to 2.48 in the year 2000. The number of families in the current year is 6,954 in the market area.

Housing

Currently, 61.1 percent of the 11,829 housing units in the market area are owner occupied; 27.5 percent, renter occupied; and 11.4 percent are vacant. In 2000, there were 11,860 housing units— 62.5 percent owner occupied, 29.2 percent renter occupied and 8.3 percent vacant. The rate of change in housing units since 2000 is -0.03 percent. Median home value in the market area is \$84,512, compared to a median home value of \$192,285 for the U.S. In five years, median home value is projected to change by 0.76 percent annually to \$87,770. From 2000 to the current year, median home value changed by 3.99 percent annually.

Source: U.S. Bureau of the Census, 2000 Census of Population and Housing. ESRI forecasts for 2008 and 2013. ESRI converted 1990 Census data into 2000 geography.



Site Type: Drive Time	Midland (Beaver County) Pennsylvania, United States Drive Time: 5 minutes	Midland (Beaver County) Pennsylvania, United States Drive Time: 10 minutes	Midland (Beaver County) Pennsylvania, United States Drive Time: 15 minutes
Median Household Income			
1990 Median HH Income	\$15,736	\$18,804	\$19,077
2000 Median HH Income	\$23,583	\$29,123	\$29,265
2008 Median HH Income	\$28,964	\$37,191	\$36,888
2013 Median HH Income	\$34,382	\$44,481	\$43,208
1990-2000 Annual Rate	4.13%	4.47%	4.37%
2000-2008 Annual Rate	2.52%	3.01%	2.85%
2008-2013 Annual Rate	3.49%	3.64%	3.21%
Per Capita Income			
1990 Per Capita Income	\$9,244	\$10,025	\$9,723
2000 Per Capita Income	\$17,107	\$16,363	\$15,756
2008 Per Capita Income	\$19,532	\$20,568	\$19,737
2013 Per Capita Income	\$23,186	\$24,098	\$22,810
1990-2000 Annual Rate	6.35%	5.02%	4.95%
2000-2008 Annual Rate	1.62%	2.81%	2.77%
2008-2013 Annual Rate	3.49%	3.22%	2.94%
Average Household Income			
1990 Average Household Income	\$20,732	\$24,900	\$24,766
2000 Average Household Income	\$37,169	\$39,262	\$38,437
2008 Average HH Income	\$42,213	\$48,503	\$47,882
2013 Average HH Income	\$49,827	\$56,552	\$55,008
1990-2000 Annual Rate	6.01%	4.66%	4.49%
2000-2008 Annual Rate	1.55%	2.6%	2.7%
2008-2013 Annual Rate	3.37%	3.12%	2.81%

Households by Income

Current median household income is \$36,888 in the market area, compared to \$53,154 for all U.S. households. Median household income is projected to be \$43,208 in five years. In 2000, median household income was \$29,265, compared to \$19,077 in 1990.

Current average household income is \$47,882 in this market area, compared to \$73,126 for all U.S. households. Average household income is projected to be \$55,008 in five years. In 2000, average household income was \$38,437, compared to \$24,766 in 1990.

Current per capita income is \$19,737 in the market area, compared to the U.S. per capita income of \$27,916. The per capita income is projected to be \$22,810 in five years. In 2000, the per capita income was \$15,756, compared to \$9,723 in 1990.

Population by Employment

Total Businesses	146	216	1,055
Total Employees	1,398	2,116	8,979

Currently, 91.7 percent of the civilian labor force in the identified market area is employed and 8.3 percent are unemployed. In comparison, 93.4 percent of the U.S. civilian labor force is employed, and 6.6 percent are unemployed. In five years the rate of employment in the market area will be 92.1 percent of the civilian labor force, and unemployment will be 7.9 percent. The percentage of the U.S. civilian labor force that will be employed in five years is 93.9 percent, and 6.1 percent will be unemployed. In 2000, 58.6 percent of the population aged 16 years or older in the market area participated in the labor force, and 0.1 percent were in the Armed Forces.

In the current year, the occupational distribution of the employed population is:

- 44.8 percent in white collar jobs (compared to 60.2 percent of U.S. employment)
- 22.8 percent in service jobs (compared to 16.5 percent of U.S. employment)
- 32.4 percent in blue collar jobs (compared to 23.3 percent of U.S. employment)

In 2000, 82.8 percent of the market area population drove alone to work, and 1.6 percent worked at home. The average travel time to work in 2000 was 24.1 minutes in the market area, compared to the U.S. average of 25.5 minutes.

Population by Education

In 2008, the educational attainment of the population aged 25 years or older in the market area was distributed as follows:

- 16.5 percent had not earned a high school diploma (16.4 percent in the U.S.)
- 47.6 percent were high school graduates only (29.6 percent in the U.S.)
- 7.8 percent had completed an Associate degree (7.2 percent in the U.S.)
- 7.9 percent had a Bachelor's degree (17.0 percent in the U.S.)
- 3.0 percent had earned a Master's/Professional/Doctorate Degree (9.7 percent in the U.S.)



Demographic and Income Profile - Appraisal Version

Prepared By: STDBOnline.com

Midland (Beaver County)

Latitude 40.6377

Longitude -80.4571

Pennsylvania, United States

Site Type: Drive Time

Drive Time: 5 minutes

Summary	2000	2008	2013
Population	3,019	2,752	2,637
Households	1,370	1,274	1,228
Families	796	709	667
Average Household Size	2.19	2.14	2.13
Owner Occupied HUs	684	626	588
Renter Occupied HUs	686	648	640
Median Age	40.6	40.8	41.9

Trends: 2008-2013 Annual Rate	Area	State	National
Population	-0.85%	0.32%	1.23%
Households	-0.73%	0.42%	1.26%
Families	-1.21%	0.09%	1.05%
Owner HHs	-1.24%	0.24%	1.07%
Median Household Income	3.49%	3.45%	3.19%

Households by Income	2000		2008		2013	
	Number	Percent	Number	Percent	Number	Percent
< \$15,000	377	27.3%	318	24.9%	257	20.9%
\$15,000 - \$24,999	353	25.5%	226	17.7%	168	13.7%
\$25,000 - \$34,999	204	14.8%	186	14.6%	197	16.0%
\$35,000 - \$49,999	191	13.8%	213	16.7%	183	14.9%
\$50,000 - \$74,999	158	11.4%	166	13.0%	220	17.9%
\$75,000 - \$99,999	53	3.8%	100	7.8%	113	9.2%
\$100,000 - \$149,999	24	1.7%	38	3.0%	54	4.4%
\$150,000 - \$199,000	9	0.7%	8	0.6%	14	1.1%
\$200,000+	14	1.0%	20	1.6%	23	1.9%
Median Household Income	\$23,583		\$28,964		\$34,382	
Average Household Income	\$37,169		\$42,213		\$49,827	
Per Capita Income	\$17,107		\$19,532		\$23,186	

Population by Age	2000		2008		2013	
	Number	Percent	Number	Percent	Number	Percent
0 - 4	205	6.8%	193	7.0%	183	6.9%
5 - 9	206	6.8%	186	6.8%	171	6.5%
10 - 14	183	6.1%	182	6.6%	174	6.6%
15 - 19	179	5.9%	173	6.3%	168	6.4%
20 - 24	165	5.5%	152	5.5%	159	6.0%
25 - 34	352	11.7%	304	11.0%	267	10.1%
35 - 44	425	14.1%	336	12.2%	288	10.9%
45 - 54	325	10.8%	402	14.6%	372	14.1%
55 - 64	256	8.5%	283	10.3%	354	13.4%
65 - 74	345	11.4%	219	8.0%	202	7.7%
75 - 84	299	9.9%	217	7.9%	186	7.1%
85+	80	2.6%	105	3.8%	111	4.2%

Data Note: Income is expressed in current dollars.

Source: U.S. Bureau of the Census, 2000 Census of Population and Housing. ESRI forecasts for 2008 and 2013.



Demographic and Income Profile - Appraisal Version

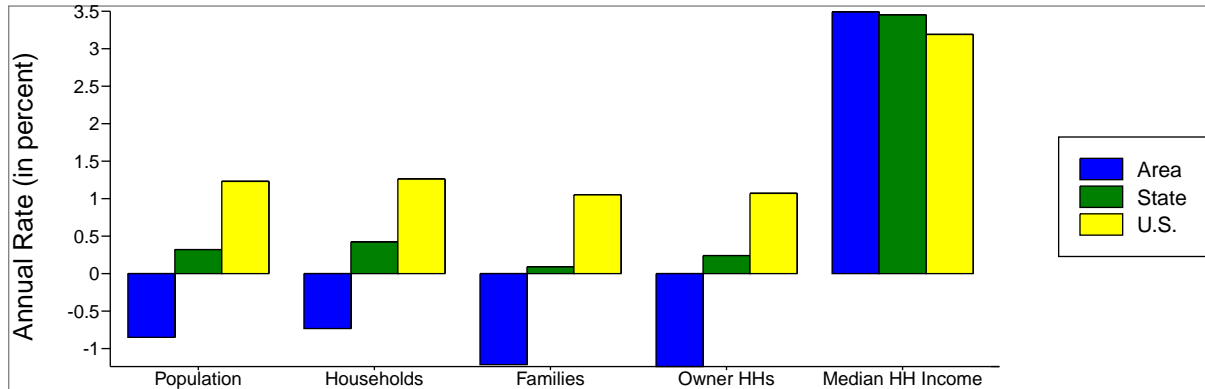
Prepared By: STDBOnline.com

Midland (Beaver County)
Pennsylvania, United States

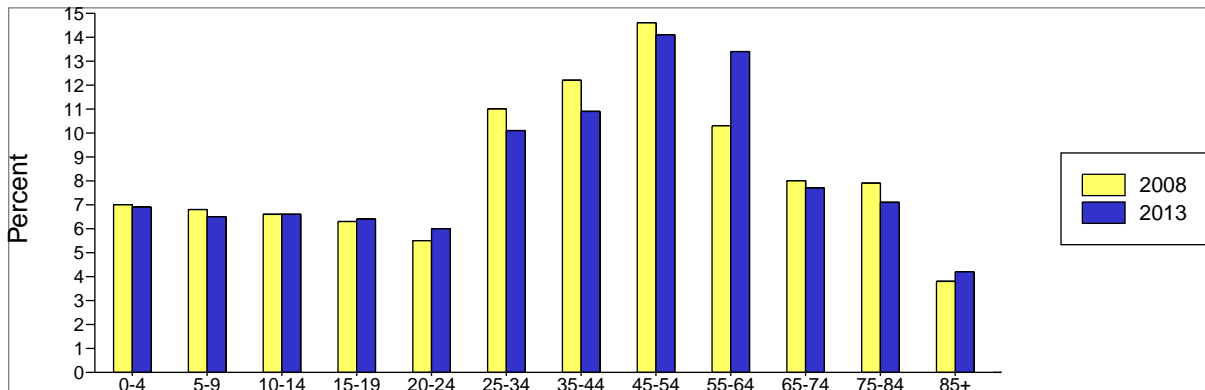
Site Type: Drive Time

Latitude 40.6377
Longitude -80.4571
Drive Time: 5 minutes

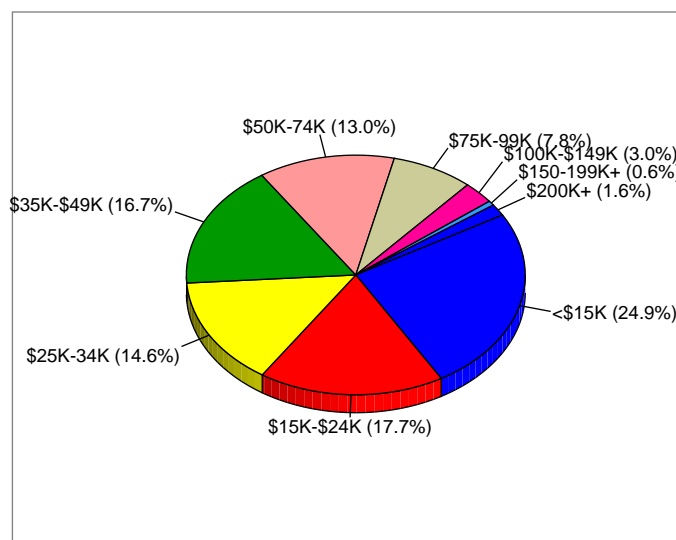
Trends 2008-2013



Population by Age



2008 Household Income



Source: ESRI forecasts for 2008 and 2013.



Demographic and Income Profile - Appraisal Version

Prepared By: STDBOnline.com

Midland (Beaver County)
Pennsylvania, United States

Site Type: Drive Time

Latitude 40.6377
Longitude -80.4571
Drive Time: 10 minutes

Summary	2000	2008	2013
Population	7,549	7,110	6,925
Households	3,121	2,995	2,935
Families	2,074	1,937	1,865
Average Household Size	2.40	2.35	2.34
Owner Occupied HUs	2,090	2,011	1,952
Renter Occupied HUs	1,031	984	983
Median Age	39.8	41.3	42.6

Trends: 2008-2013 Annual Rate	Area	State	National
Population	-0.53%	0.32%	1.23%
Households	-0.4%	0.42%	1.26%
Families	-0.75%	0.09%	1.05%
Owner HHs	-0.59%	0.24%	1.07%
Median Household Income	3.64%	3.45%	3.19%

Households by Income	2000		2008		2013	
	Number	Percent	Number	Percent	Number	Percent
< \$15,000	641	20.5%	509	17.0%	416	14.2%
\$15,000 - \$24,999	709	22.7%	441	14.7%	321	10.9%
\$25,000 - \$34,999	496	15.9%	462	15.4%	412	14.0%
\$35,000 - \$49,999	488	15.6%	504	16.8%	474	16.2%
\$50,000 - \$74,999	482	15.4%	537	17.9%	606	20.7%
\$75,000 - \$99,999	177	5.7%	334	11.1%	389	13.3%
\$100,000 - \$149,999	89	2.9%	148	4.9%	220	7.5%
\$150,000 - \$199,000	18	0.6%	27	0.9%	50	1.7%
\$200,000+	22	0.7%	35	1.2%	45	1.5%
Median Household Income	\$29,123		\$37,191		\$44,481	
Average Household Income	\$39,262		\$48,503		\$56,552	
Per Capita Income	\$16,363		\$20,568		\$24,098	

Population by Age	2000		2008		2013	
	Number	Percent	Number	Percent	Number	Percent
0 - 4	460	6.1%	446	6.3%	430	6.2%
5 - 9	529	7.0%	429	6.0%	404	5.8%
10 - 14	528	7.0%	446	6.3%	416	6.0%
15 - 19	483	6.4%	465	6.5%	423	6.1%
20 - 24	384	5.1%	418	5.9%	418	6.0%
25 - 34	872	11.5%	805	11.3%	777	11.2%
35 - 44	1,155	15.3%	907	12.8%	792	11.4%
45 - 54	972	12.9%	1,113	15.7%	1,046	15.1%
55 - 64	703	9.3%	827	11.6%	996	14.4%
65 - 74	749	9.9%	568	8.0%	564	8.1%
75 - 84	584	7.7%	489	6.9%	437	6.3%
85+	131	1.7%	198	2.8%	221	3.2%

Data Note: Income is expressed in current dollars.

Source: U.S. Bureau of the Census, 2000 Census of Population and Housing. ESRI forecasts for 2008 and 2013.



Demographic and Income Profile - Appraisal Version

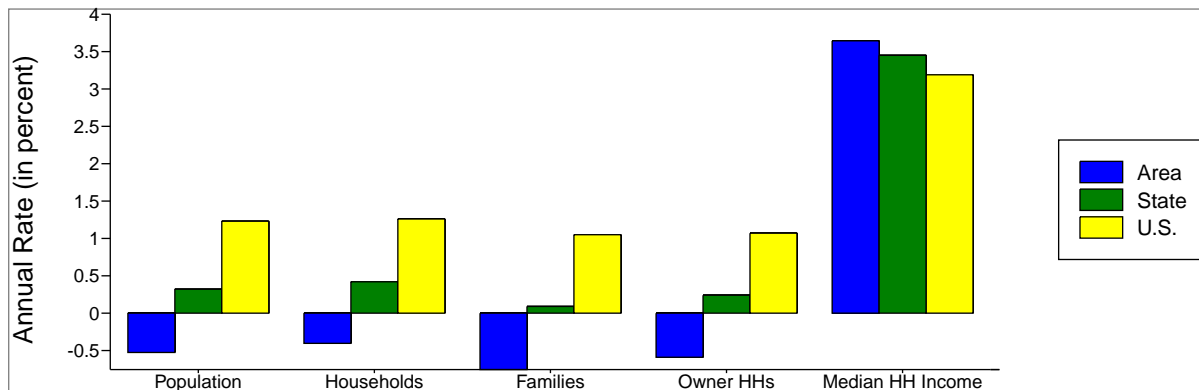
Prepared By: STDBOnline.com

Midland (Beaver County)
Pennsylvania, United States

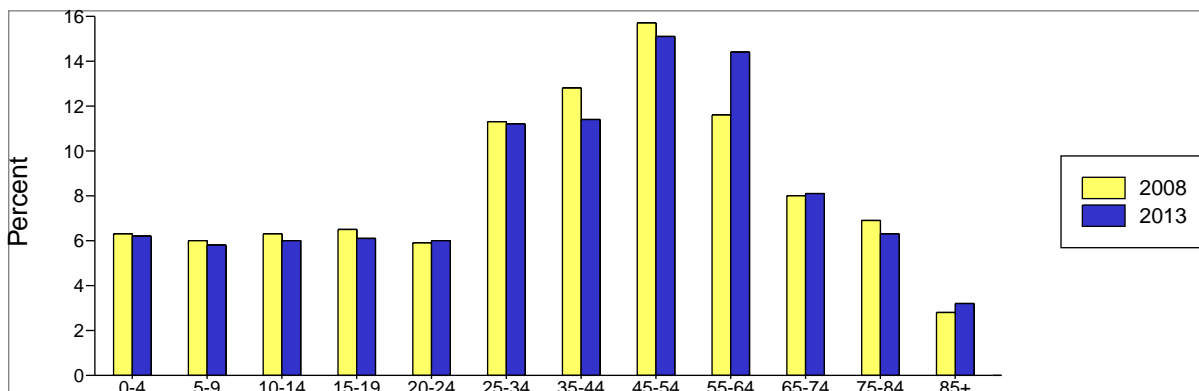
Site Type: Drive Time

Latitude 40.6377
Longitude -80.4571
Drive Time: 10 minutes

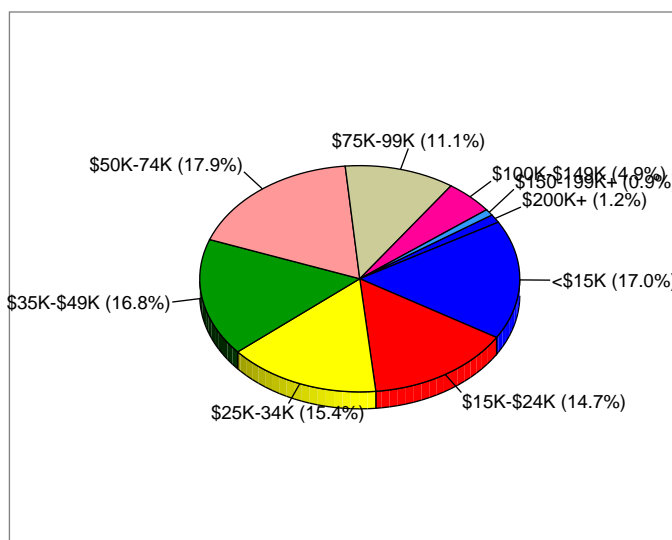
Trends 2008-2013



Population by Age



2008 Household Income



Source: ESRI forecasts for 2008 and 2013.



Demographic and Income Profile - Appraisal Version

Prepared By: STDBOnline.com

Midland (Beaver County)

Latitude 40.6377

Pennsylvania, United States

Longitude -80.4571

Site Type: Drive Time

Drive Time: 15 minutes

Summary	2000	2008	2013
Population	27,325	25,917	25,355
Households	10,866	10,477	10,310
Families	7,396	6,954	6,727
Average Household Size	2.48	2.44	2.42
Owner Occupied HUs	7,401	7,224	7,063
Renter Occupied HUs	3,465	3,253	3,248
Median Age	38.5	40.4	41.9

Trends: 2008-2013 Annual Rate	Area	State	National
Population	-0.44%	0.32%	1.23%
Households	-0.32%	0.42%	1.26%
Families	-0.66%	0.09%	1.05%
Owner HHs	-0.45%	0.24%	1.07%
Median Household Income	3.21%	3.45%	3.19%

Households by Income	2000		2008		2013	
	Number	Percent	Number	Percent	Number	Percent
< \$15,000	2,488	22.7%	1,876	17.9%	1,610	15.6%
\$15,000 - \$24,999	2,222	20.3%	1,516	14.5%	1,215	11.8%
\$25,000 - \$34,999	1,675	15.3%	1,591	15.2%	1,304	12.6%
\$35,000 - \$49,999	1,668	15.2%	1,639	15.6%	1,661	16.1%
\$50,000 - \$74,999	1,738	15.9%	1,989	19.0%	2,095	20.3%
\$75,000 - \$99,999	695	6.3%	1,111	10.6%	1,355	13.1%
\$100,000 - \$149,999	346	3.2%	539	5.1%	748	7.3%
\$150,000 - \$199,000	60	0.5%	117	1.1%	171	1.7%
\$200,000+	57	0.5%	102	1.0%	152	1.5%
Median Household Income	\$29,265		\$36,888		\$43,208	
Average Household Income	\$38,437		\$47,882		\$55,008	
Per Capita Income	\$15,756		\$19,737		\$22,810	

Population by Age	2000		2008		2013	
	Number	Percent	Number	Percent	Number	Percent
0 - 4	1,731	6.3%	1,666	6.4%	1,599	6.3%
5 - 9	1,964	7.2%	1,615	6.2%	1,535	6.1%
10 - 14	1,965	7.2%	1,635	6.3%	1,547	6.1%
15 - 19	1,828	6.7%	1,670	6.4%	1,548	6.1%
20 - 24	1,478	5.4%	1,531	5.9%	1,485	5.9%
25 - 34	3,274	12.0%	3,112	12.0%	2,938	11.6%
35 - 44	4,209	15.4%	3,337	12.9%	3,001	11.8%
45 - 54	3,755	13.7%	4,041	15.6%	3,767	14.9%
55 - 64	2,530	9.3%	3,116	12.0%	3,695	14.6%
65 - 74	2,395	8.8%	1,982	7.6%	2,055	8.1%
75 - 84	1,738	6.4%	1,565	6.0%	1,457	5.7%
85+	456	1.7%	645	2.5%	730	2.9%

Data Note: Income is expressed in current dollars.

Source: U.S. Bureau of the Census, 2000 Census of Population and Housing. ESRI forecasts for 2008 and 2013.



Demographic and Income Profile - Appraisal Version

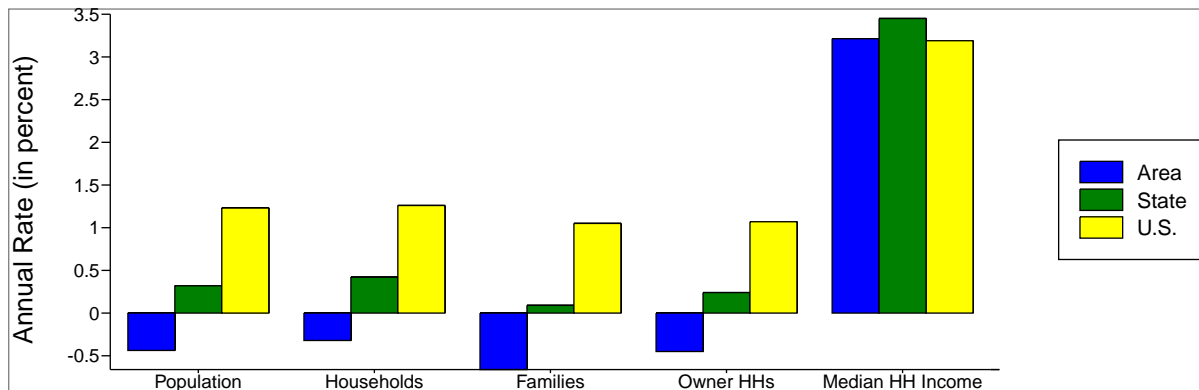
Prepared By: STDBOnline.com

Midland (Beaver County)
Pennsylvania, United States

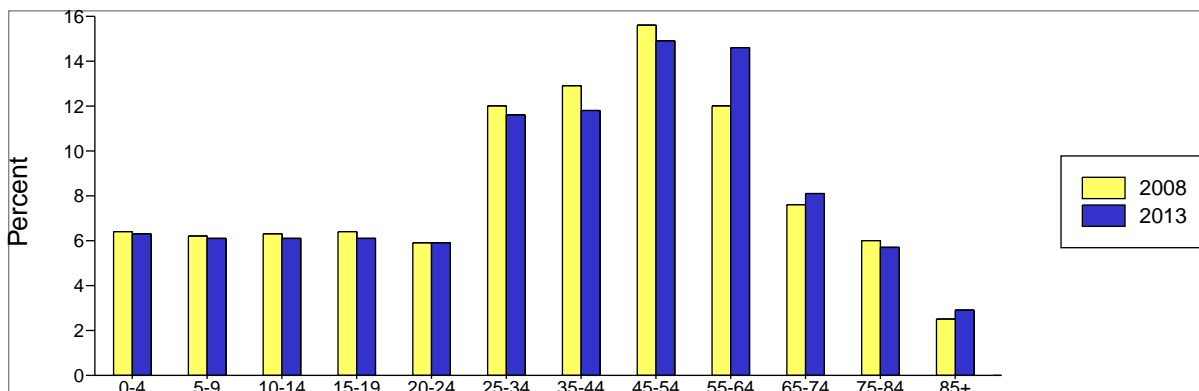
Site Type: Drive Time

Latitude 40.6377
Longitude -80.4571
Drive Time: 15 minutes

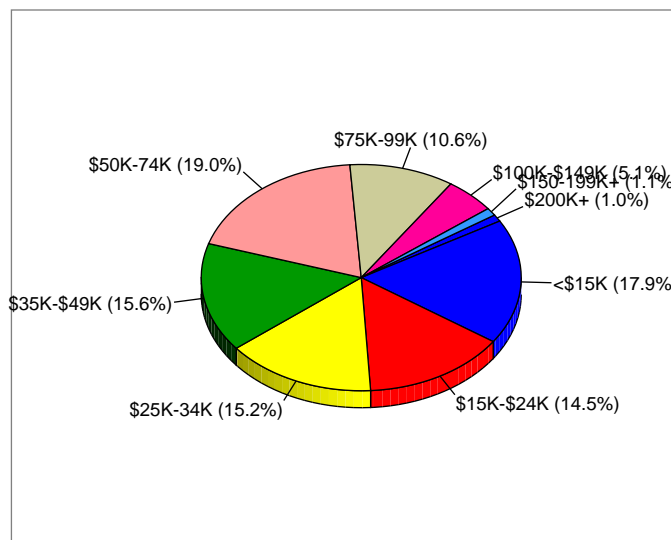
Trends 2008-2013



Population by Age



2008 Household Income



Source: ESRI forecasts for 2008 and 2013.



Latitude 40.6377
Longitude -80.4571

Midland (Beaver County)	Midland (Beaver County)	Midland (Beaver County)
Pennsylvania, United S	Pennsylvania, United S	Pennsylvania, United S
Drive Time: 5 minutes	Drive Time: 10 minutes	Drive Time: 15 minutes



1990 Total Population	3,164	8,006	28,747
2000 Total Population	3,019	7,549	27,325
2000 Group Quarters	20	59	393
2000 Population Density	1,372.5	397.8	389.8
2008 Total Population	2,752	7,110	25,917
2008 Population Density	1,251.0	374.7	369.7
2013 Total Population	2,637	6,925	25,355
2008 - 2013 Annual Rate	-0.85%	-0.53%	-0.44%



1990 Households	1,403	3,180	11,023
2000 Households	1,370	3,121	10,866
2000 Average Household Size	2.19	2.4	2.48
2008 Households	1,274	2,995	10,477
2008 Average Household Size	2.14	2.35	2.44
2013 Households	1,228	2,935	10,310
2013 Average Household Size	2.13	2.34	2.42
2008 - 2013 Annual Rate	-0.73%	-0.4%	-0.32%
2000 Families	796	2,074	7,396
2000 Average Family Size	2.89	2.97	3.02
2008 Families	709	1,937	6,954
2008 Average Family Size	2.88	2.95	2.99
2013 Families	667	1,865	6,727
2013 Average Family Size	2.88	2.94	2.99
2008 - 2013 Annual Rate	-1.21%	-0.75%	-0.66%



2000 Housing Units	1,599	3,439	11,860
Owner Occupied Housing Units	42.9%	60.6%	62.5%
Renter Occupied Housing Units	43.1%	29.9%	29.2%
Vacant Housing Units	14.0%	9.5%	8.3%
2008 Housing Units	1,574	3,421	11,829
Owner Occupied Housing Units	39.8%	58.8%	61.1%
Renter Occupied Housing Units	41.2%	28.8%	27.5%
Vacant Housing Units	19.1%	12.5%	11.4%
2013 Housing Units	1,680	3,548	12,014
Owner Occupied Housing Units	35.0%	55.0%	58.8%
Renter Occupied Housing Units	38.1%	27.7%	27.0%
Vacant Housing Units	26.9%	17.3%	14.2%

Median Household Income

1990	\$15,736	\$18,804	\$19,077
2000	\$23,583	\$29,123	\$29,265
2008	\$28,964	\$37,191	\$36,888
2013	\$34,382	\$44,481	\$43,208

Median Home Value

1990	\$28,662	\$36,067	\$35,203
2000	\$44,207	\$57,490	\$61,192
2008	\$66,226	\$86,407	\$84,512
2013	\$69,333	\$90,136	\$87,770

Per Capita Income

1990	\$9,244	\$10,025	\$9,723
2000	\$17,107	\$16,363	\$15,756
2008	\$19,532	\$20,568	\$19,737
2013	\$23,186	\$24,098	\$22,810

Median Age

1990	41.0	37.4	36.0
2000	40.6	39.8	38.5
2008	40.8	41.3	40.4
2013	41.9	42.6	41.9

Data Note: Household population includes persons not residing in group quarters. Average Household Size is the household population divided by total households. Persons in families include the householder and persons related to the householder by birth, marriage, or adoption. Per Capita Income represents the income received by all persons aged 15 years and over divided by total population. Detail may not sum to totals due to rounding.

Source: U.S. Bureau of the Census, 2000 Census of Population and Housing. ESRI forecasts for 2008 and 2013. ESRI converted 1990 Census data into 2000 geography.



Latitude 40.6377
Longitude -80.4571

Midland (Beaver County)
Pennsylvania, United S
Drive Time: 5 minutes

Midland (Beaver County)
Pennsylvania, United S
Drive Time: 10 minutes

Midland (Beaver County)
Pennsylvania, United S
Drive Time: 15 minutes



2000 Households by Income

Household Income Base	Midland (Beaver County)	Midland (Beaver County)	Midland (Beaver County)
< \$15,000	1,383 27.3%	3,122 20.5%	10,949 22.7%
\$15,000 - \$24,999	25.5%	22.7%	20.3%
\$25,000 - \$34,999	14.8%	15.9%	15.3%
\$35,000 - \$49,999	13.8%	15.6%	15.2%
\$50,000 - \$74,999	11.4%	15.4%	15.9%
\$75,000 - \$99,999	3.8%	5.7%	6.3%
\$100,000 - \$149,999	1.7%	2.9%	3.2%
\$150,000 - \$199,999	0.7%	0.6%	0.5%
\$200,000+	1.0%	0.7%	0.5%
Average Household Income	\$37,169	\$39,262	\$38,437

2008 Households by Income

Household Income Base	1,275	2,997	10,480
< \$15,000	24.9%	17.0%	17.9%
\$15,000 - \$24,999	17.7%	14.7%	14.5%
\$25,000 - \$34,999	14.6%	15.4%	15.2%
\$35,000 - \$49,999	16.7%	16.8%	15.6%
\$50,000 - \$74,999	13.0%	17.9%	19.0%
\$75,000 - \$99,999	7.8%	11.1%	10.6%
\$100,000 - \$149,999	3.0%	4.9%	5.1%
\$150,000 - \$199,999	0.6%	0.9%	1.1%
\$200,000+	1.6%	1.2%	1.0%
Average Household Income	\$42,213	\$48,503	\$47,882

2013 Households by Income

Household Income Base	1,229	2,933	10,311
< \$15,000	20.9%	14.2%	15.6%
\$15,000 - \$24,999	13.7%	10.9%	11.8%
\$25,000 - \$34,999	16.0%	14.0%	12.6%
\$35,000 - \$49,999	14.9%	16.2%	16.1%
\$50,000 - \$74,999	17.9%	20.7%	20.3%
\$75,000 - \$99,999	9.2%	13.3%	13.1%
\$100,000 - \$149,999	4.4%	7.5%	7.3%
\$150,000 - \$199,999	1.1%	1.7%	1.7%
\$200,000+	1.9%	1.5%	1.5%
Average Household Income	\$49,827	\$56,552	\$55,008

2000 Owner Occupied HUs by Value

Total	685	2,106	7,352
<\$50,000	56.9%	41.4%	39.3%
\$50,000 - 99,999	37.7%	43.6%	41.3%
\$100,000 - 149,999	2.9%	9.7%	11.9%
\$150,000 - 199,999	1.6%	3.5%	4.3%
\$200,000 - \$299,999	0.9%	1.5%	2.4%
\$300,000 - 499,999	0.0%	0.1%	0.3%
\$500,000 - 999,999	0.0%	0.0%	0.2%
\$1,000,000+	0.0%	0.2%	0.3%
Average Home Value	\$49,868	\$68,153	\$75,958

2000 Specified Renter Occupied HUs by Contract Rent

Total	685	1,021	3,485
With Cash Rent	90.8%	90.9%	90.4%
No Cash Rent	9.2%	9.1%	9.6%
Median Rent	\$233	\$244	\$279
Average Rent	\$240	\$256	\$281

Data Note: Income represents the preceding year, expressed in current dollars. Household income includes wage and salary earnings, interest, dividends, net rents, pensions, SSI and welfare payments, child support and alimony. Specified Renter Occupied HUs exclude houses on 10+ acres. Average Rent excludes units paying no cash rent.

Source: U.S. Bureau of the Census, 2000 Census of Population and Housing. ESRI forecasts for 2008 and 2013.



Latitude 40.6377
Longitude -80.4571

Midland (Beaver County)
Pennsylvania, United S
Drive Time: 5 minutes

Midland (Beaver County)
Pennsylvania, United S
Drive Time: 10 minutes

Midland (Beaver County)
Pennsylvania, United S
Drive Time: 15 minutes



2000 Population by Age

	Midland (Beaver County)	Midland (Beaver County)	Midland (Beaver County)
Total	3,020	7,550	27,323
0 - 4	6.8%	6.1%	6.3%
5 - 9	6.8%	7.0%	7.2%
10 - 14	6.1%	7.0%	7.2%
15 - 19	5.9%	6.4%	6.7%
20 - 24	5.5%	5.1%	5.4%
25 - 34	11.7%	11.5%	12.0%
35 - 44	14.1%	15.3%	15.4%
45 - 54	10.8%	12.9%	13.7%
55 - 64	8.5%	9.3%	9.3%
65 - 74	11.4%	9.9%	8.8%
75 - 84	9.9%	7.7%	6.4%
85+	2.6%	1.7%	1.7%
18+	77.0%	75.9%	75.0%

2008 Population by Age

Total	2,752	7,111	25,915
0 - 4	7.0%	6.3%	6.4%
5 - 9	6.8%	6.0%	6.2%
10 - 14	6.6%	6.3%	6.3%
15 - 19	6.3%	6.5%	6.4%
20 - 24	5.5%	5.9%	5.9%
25 - 34	11.0%	11.3%	12.0%
35 - 44	12.2%	12.8%	12.9%
45 - 54	14.6%	15.7%	15.6%
55 - 64	10.3%	11.6%	12.0%
65 - 74	8.0%	8.0%	7.6%
75 - 84	7.9%	6.9%	6.0%
85+	3.8%	2.8%	2.5%
18+	75.8%	77.4%	77.0%

2013 Population by Age

Total	2,635	6,924	25,357
0 - 4	6.9%	6.2%	6.3%
5 - 9	6.5%	5.8%	6.1%
10 - 14	6.6%	6.0%	6.1%
15 - 19	6.4%	6.1%	6.1%
20 - 24	6.0%	6.0%	5.9%
25 - 34	10.1%	11.2%	11.6%
35 - 44	10.9%	11.4%	11.8%
45 - 54	14.1%	15.1%	14.9%
55 - 64	13.4%	14.4%	14.6%
65 - 74	7.7%	8.1%	8.1%
75 - 84	7.1%	6.3%	5.7%
85+	4.2%	3.2%	2.9%
18+	76.0%	78.2%	77.8%

2000 Population by Sex

Males	45.4%	47.3%	47.5%
Females	54.6%	52.7%	52.5%

2008 Population by Sex

Males	45.8%	47.5%	47.6%
Females	54.2%	52.5%	52.4%

2013 Population by Sex

Males	46.1%	47.6%	47.7%
Females	53.9%	52.4%	52.3%

Source: U.S. Bureau of the Census, 2000 Census of Population and Housing. ESRI forecasts for 2008 and 2013.



Latitude 40.6377
Longitude -80.4571

Midland (Beaver County)
Pennsylvania, United S
Drive Time: 5 minutes

Midland (Beaver County)
Pennsylvania, United S
Drive Time: 10 minutes

Midland (Beaver County)
Pennsylvania, United S
Drive Time: 15 minutes



2008 Population 15+ by Marital Status

	Midland (Beaver County)	Midland (Beaver County)	Midland (Beaver County)
Total	2,192	5,791	21,001
Never Married	27.2%	25.1%	23.4%
Married	43.6%	52.8%	55.7%
Widowed	13.7%	10.7%	8.9%
Divorced	15.4%	11.4%	12.0%



2000 Population 16+ by Employment Status

	Midland (Beaver County)	Midland (Beaver County)	Midland (Beaver County)
Total	2,394	5,943	21,305
In Labor Force	47.9%	56.7%	58.6%
Civilian Employed	43.2%	52.4%	54.8%
Civilian Unemployed	4.7%	4.3%	3.7%
In Armed Forces	0.0%	0.0%	0.1%
Not in Labor Force	52.1%	43.3%	41.4%

2008 Civilian Population 16+ in Labor Force

	Midland (Beaver County)	Midland (Beaver County)	Midland (Beaver County)
Civilian Employed	86.7%	89.9%	91.7%
Civilian Unemployed	13.3%	10.1%	8.3%

2013 Civilian Population 16+ in Labor Force

	Midland (Beaver County)	Midland (Beaver County)	Midland (Beaver County)
Civilian Employed	87.4%	90.4%	92.1%
Civilian Unemployed	12.6%	9.6%	7.9%

2000 Females 16+ by Employment Status and Age of Children

	Midland (Beaver County)	Midland (Beaver County)	Midland (Beaver County)
Total	1,320	3,181	11,236
Own Children < 6 Only	5.5%	5.2%	6.2%
Employed/in Armed Forces	2.4%	2.9%	4.1%
Unemployed	0.0%	0.0%	0.1%
Not in Labor Force	3.1%	2.3%	1.9%
Own Children < 6 and 6-17 Only	8.5%	7.1%	6.3%
Employed/in Armed Forces	3.1%	3.4%	3.6%
Unemployed	1.3%	0.7%	0.3%
Not in Labor Force	4.1%	3.0%	2.4%
Own Children 6-17 Only	12.7%	16.8%	15.9%
Employed/in Armed Forces	8.0%	11.4%	10.8%
Unemployed	1.2%	1.0%	0.6%
Not in Labor Force	3.5%	4.4%	4.5%
No Own Children < 18	73.3%	70.8%	71.5%
Employed/in Armed Forces	21.7%	27.4%	28.9%
Unemployed	2.6%	2.2%	2.4%
Not in Labor Force	48.9%	41.2%	40.3%

Source: U.S. Bureau of the Census, 2000 Census of Population and Housing. ESRI forecasts for 2008 and 2013.



Latitude 40.6377
Longitude -80.4571

Midland (Beaver County)
Pennsylvania, United S
Drive Time: 5 minutes

Midland (Beaver County)
Pennsylvania, United S
Drive Time: 10 minutes

Midland (Beaver County)
Pennsylvania, United S
Drive Time: 15 minutes



2008 Employed Population 16+ by Industry

	Midland (Beaver County)	Midland (Beaver County)	Midland (Beaver County)
Total	968	3,076	11,403
Agriculture/Mining	0.0%	0.1%	0.4%
Construction	3.6%	6.4%	6.4%
Manufacturing	17.7%	14.4%	15.5%
Wholesale Trade	0.7%	1.4%	2.0%
Retail Trade	10.7%	11.2%	12.2%
Transportation/Utilities	10.6%	12.9%	10.6%
Information	0.7%	1.4%	1.5%
Finance/Insurance/Real Estate	3.4%	3.5%	3.7%
Services	47.8%	44.9%	44.6%
Public Administration	4.6%	3.6%	3.1%

2008 Employed Population 16+ by Occupation

	Midland (Beaver County)	Midland (Beaver County)	Midland (Beaver County)
Total	964	3,075	11,401
White Collar	45.6%	46.3%	44.8%
Management/Business/Financial	3.8%	6.3%	6.4%
Professional	11.5%	12.4%	13.6%
Sales	13.1%	11.3%	11.3%
Administrative Support	17.2%	16.4%	13.5%
Services	30.0%	24.0%	22.8%
Blue Collar	24.4%	29.7%	32.4%
Farming/Forestry/Fishing	0.0%	0.0%	0.1%
Construction/Extraction	5.5%	6.4%	6.6%
Installation/Maintenance/Repair	2.4%	4.5%	4.8%
Production	9.3%	9.5%	10.6%
Transportation/Material Moving	7.2%	9.4%	10.4%



2000 Workers 16+ by Means of Transportation to Work

	Midland (Beaver County)	Midland (Beaver County)	Midland (Beaver County)
Total	1,006	3,064	11,504
Drove Alone - Car, Truck, or Van	79.1%	82.1%	82.8%
Carpooled - Car, Truck, or Van	11.0%	10.8%	11.3%
Public Transportation	0.5%	0.4%	0.8%
Walked	5.6%	4.2%	2.8%
Other Means	2.1%	1.2%	0.7%
Worked at Home	1.7%	1.3%	1.6%

2000 Workers 16+ by Travel Time to Work

	Midland (Beaver County)	Midland (Beaver County)	Midland (Beaver County)
Total	1,006	3,064	11,506
Did Not Work at Home	98.3%	98.7%	98.4%
Less than 5 minutes	2.4%	3.1%	3.9%
5 to 9 minutes	13.6%	12.2%	14.5%
10 to 19 minutes	20.5%	25.2%	29.9%
20 to 24 minutes	12.1%	13.2%	11.0%
25 to 34 minutes	25.8%	21.6%	16.9%
35 to 44 minutes	9.7%	8.7%	7.7%
45 to 59 minutes	9.4%	9.0%	8.4%
60 to 89 minutes	3.0%	3.4%	4.0%
90 or more minutes	1.7%	2.4%	2.0%
Worked at Home	1.7%	1.3%	1.6%
Average Travel Time to Work (in min)	26.4	26.1	24.1

2000 Households by Vehicles Available

	Midland (Beaver County)	Midland (Beaver County)	Midland (Beaver County)
Total	1,371	3,130	10,860
None	20.1%	13.6%	11.4%
1	46.2%	39.0%	38.0%
2	27.1%	32.9%	34.6%
3	5.8%	10.5%	11.5%
4	0.4%	2.7%	3.0%
5+	0.4%	1.3%	1.5%
Average Number of Vehicles Available	1.2	1.5	1.6

Source: U.S. Bureau of the Census, 2000 Census of Population and Housing. ESRI forecasts for 2008.



Latitude 40.6377
Longitude -80.4571

Midland (Beaver County)
Pennsylvania, United S
Drive Time: 5 minutes

Midland (Beaver County)
Pennsylvania, United S
Drive Time: 10 minutes

Midland (Beaver County)
Pennsylvania, United S
Drive Time: 15 minutes



2000 Households by Type

	Midland (Beaver County)	Midland (Beaver County)	Midland (Beaver County)
Total	1,370	3,121	10,865
Family Households	58.0%	66.5%	68.1%
Married-couple Family	35.1%	46.9%	49.8%
With Related Children	13.9%	19.9%	21.9%
Other Family (No Spouse)	22.9%	19.5%	18.3%
With Related Children	13.8%	11.7%	11.7%
Nonfamily Households	42.0%	33.5%	31.9%
Householder Living Alone	38.1%	29.8%	28.0%
Householder Not Living Alone	3.9%	3.7%	3.9%
Households with Related Children	27.7%	31.6%	33.6%
Households with Persons 65+	40.4%	34.8%	29.9%

2000 Households by Size

	Midland (Beaver County)	Midland (Beaver County)	Midland (Beaver County)
Total	1,370	3,121	10,866
1 Person Household	38.1%	29.8%	28.0%
2 Person Household	30.4%	32.6%	32.3%
3 Person Household	15.0%	16.9%	17.9%
4 Person Household	9.7%	12.9%	13.7%
5 Person Household	4.5%	5.4%	5.5%
6 Person Household	1.4%	1.5%	1.8%
7+ Person Household	0.8%	0.8%	0.8%

2000 Households by Year Householder Moved In

	Midland (Beaver County)	Midland (Beaver County)	Midland (Beaver County)
Total	1,369	3,129	10,862
Moved in 1999 to March 2000	12.3%	11.3%	15.2%
Moved in 1995 to 1998	25.1%	20.6%	21.9%
Moved in 1990 to 1994	18.2%	15.9%	15.0%
Moved in 1980 to 1989	10.4%	14.5%	16.1%
Moved in 1970 to 1979	6.9%	12.8%	11.9%
Moved in 1969 or Earlier	27.1%	25.0%	19.9%
Median Year Householder Moved In	1992	1988	1991



2000 Housing Units by Units in Structure

	Midland (Beaver County)	Midland (Beaver County)	Midland (Beaver County)
Total	1,594	3,458	11,837
1, Detached	41.3%	64.9%	71.1%
1, Attached	16.8%	8.7%	4.2%
2	11.0%	6.3%	5.4%
3 or 4	10.3%	6.0%	4.8%
5 to 9	12.4%	7.1%	5.0%
10 to 19	4.2%	2.2%	1.4%
20+	3.6%	1.7%	2.6%
Mobile Home	0.4%	3.0%	5.6%
Other	0.0%	0.0%	0.0%

2000 Housing Units by Year Structure Built

	Midland (Beaver County)	Midland (Beaver County)	Midland (Beaver County)
Total	1,597	3,447	11,851
1999 to March 2000	0.1%	0.6%	0.9%
1995 to 1998	0.1%	0.9%	1.9%
1990 to 1994	0.4%	1.2%	2.3%
1980 to 1989	0.9%	2.1%	4.5%
1970 to 1979	3.3%	8.8%	10.6%
1969 or Earlier	95.3%	86.5%	79.9%
Median Year Structure Built	1934	1944	1947

Source: U.S. Bureau of the Census, 2000 Census of Population and Housing.



Latitude 40.6377
 Longitude -80.4571

Midland (Beaver County)
 Pennsylvania, United S
 Drive Time: 5 minutes

Midland (Beaver County)
 Pennsylvania, United S
 Drive Time: 10 minutes

Midland (Beaver County)
 Pennsylvania, United S
 Drive Time: 15 minutes



2000 Population 3+ by School Enrollment

	Midland (Beaver County)	Midland (Beaver County)	Midland (Beaver County)
Total	2,893	7,249	26,239
Enrolled in Nursery/Preschool	1.5%	1.2%	1.5%
Enrolled in Kindergarten	1.4%	1.5%	1.5%
Enrolled in Grade 1-8	11.4%	12.1%	12.2%
Enrolled in Grade 9-12	3.7%	5.5%	5.6%
Enrolled in College	2.1%	2.8%	2.6%
Enrolled in Grad/Prof School	0.2%	0.2%	0.4%
Not Enrolled in School	79.7%	76.5%	76.2%

2008 Population 25+ by Educational Attainment

	Midland (Beaver County)	Midland (Beaver County)	Midland (Beaver County)
Total	1,866	4,908	17,800
Less than 9th Grade	6.4%	4.9%	4.8%
9th - 12th Grade, No Diploma	12.4%	11.0%	11.7%
High School Graduate	50.5%	47.8%	47.6%
Some College, No Degree	16.6%	17.8%	17.1%
Associate Degree	6.6%	9.1%	7.8%
Bachelor's Degree	6.5%	7.5%	7.9%
Graduate/Professional Degree	0.9%	1.8%	3.0%

Source: U.S. Bureau of the Census, 2000 Census of Population and Housing. ESRI forecasts for 2008.



Latitude 40.6377
Longitude -80.4571


Midland (Beaver County)
Pennsylvania, United S
Drive Time: 5 minutes

Midland (Beaver County)
Pennsylvania, United S
Drive Time: 10 minutes

Midland (Beaver County)
Pennsylvania, United S
Drive Time: 15 minutes

Top 3 Tapestry Segments

1.	Modest Income Homes	Rustbelt Retirees	Home Town
2.	Heartland Communities	Modest Income Homes	Heartland Communities
3.	Simple Living	Heartland Communities	Rustbelt Retirees

 **2008 Consumer Spending** shows the amount spent on a variety of goods and services by households that reside in the market area. Expenditures are shown by broad budget categories that are not mutually exclusive. Consumer spending does not equal business revenue.

Apparel & Services: Total \$	\$1,669,937	\$4,459,036	\$15,293,524
Average Spent	\$1,310.78	\$1,488.83	\$1,459.72
Spending Potential Index	49	55	54
Computers & Accessories: Total \$	\$169,699	\$456,072	\$1,575,511
Average Spent	\$133.20	\$152.28	\$150.38
Spending Potential Index	56	64	63
Education: Total \$	\$976,877	\$2,719,545	\$9,236,474
Average Spent	\$766.78	\$908.03	\$881.60
Spending Potential Index	56	66	64
Entertainment/Recreation: Total \$	\$2,740,995	\$7,418,224	\$25,841,721
Average Spent	\$2,151.49	\$2,476.87	\$2,466.52
Spending Potential Index	58	67	66
Food at Home: Total \$	\$3,842,456	\$10,103,921	\$34,854,608
Average Spent	\$3,016.06	\$3,373.60	\$3,326.77
Spending Potential Index	62	69	68
Food Away from Home: Total \$	\$2,592,907	\$6,928,484	\$23,875,538
Average Spent	\$2,035.25	\$2,313.35	\$2,278.85
Spending Potential Index	59	68	67
Health Care: Total \$	\$3,498,504	\$9,179,460	\$31,929,254
Average Spent	\$2,746.08	\$3,064.93	\$3,047.56
Spending Potential Index	67	75	74
HH Furnishings & Equipment: Total \$	\$1,481,555	\$4,094,776	\$14,145,850
Average Spent	\$1,162.92	\$1,367.20	\$1,350.18
Spending Potential Index	51	59	59
Investments: Total \$	\$660,023	\$1,931,300	\$6,390,736
Average Spent	\$518.07	\$644.84	\$609.98
Spending Potential Index	51	64	60
Retail Goods: Total \$	\$19,742,800	\$52,955,841	\$184,385,211
Average Spent	\$15,496.70	\$17,681.42	\$17,599.05
Spending Potential Index	57	65	65
Shelter: Total \$	\$10,660,429	\$29,083,416	\$98,761,278
Average Spent	\$8,367.68	\$9,710.66	\$9,426.48
Spending Potential Index	54	63	61
TV/Video/Sound Equipment: Total \$	\$1,133,198	\$2,968,085	\$10,213,527
Average Spent	\$889.48	\$991.01	\$974.85
Spending Potential Index	62	69	68
Travel: Total \$	\$1,241,151	\$3,527,599	\$12,148,049
Average Spent	\$974.22	\$1,177.83	\$1,159.50
Spending Potential Index	52	63	62
Vehicle Maintenance & Repairs: Total \$	\$725,825	\$1,942,933	\$6,753,242
Average Spent	\$569.72	\$648.73	\$644.58
Spending Potential Index	57	65	65

Data Note: The Spending Potential Index represents the amount spent in the area relative to a national average of 100.

Source: Consumer Spending data are derived from the 2004 and 2005 Consumer Expenditure Surveys, Bureau of Labor Statistics.